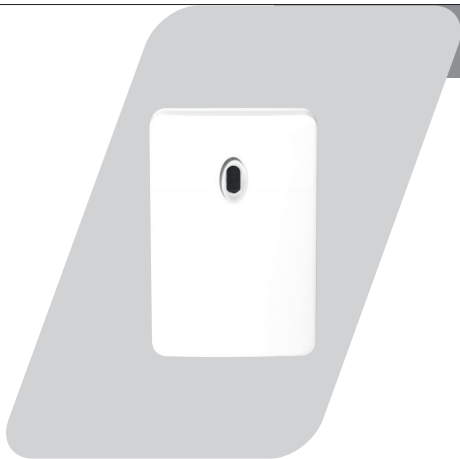


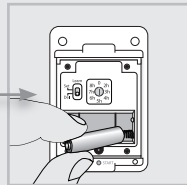
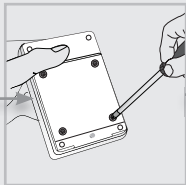
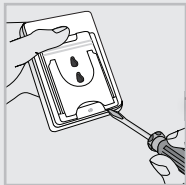
USER MANUAL  
MULTI LANGUAGE



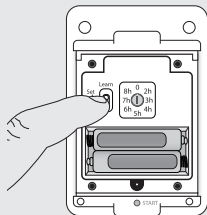
Item 71034 Version 1.0  
Visit [www.trustsmarthome.com](http://www.trustsmarthome.com)  
for the latest instructions

WIRELESS DUSK/DAWN SENSOR

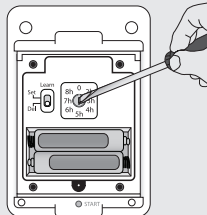
1



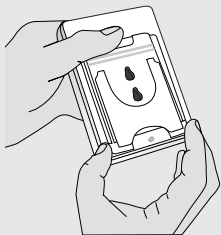
2



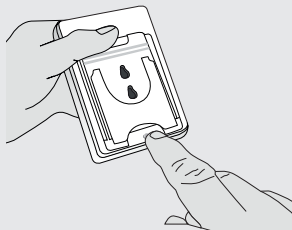
3



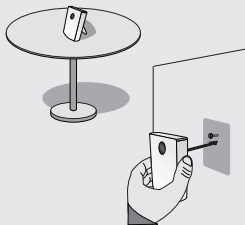
4



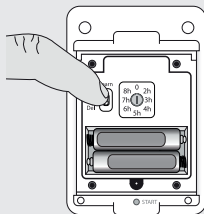
5



6



7



### **1. Install transmitter batteries**

1. Detach the foot stand with a screwdriver.
2. Remove the screws to open the battery compartment.
3. Place 2x 1,5V AAA alkaline batteries in the battery compartments. The polarity should match the symbols on the holder.

### **2. Assign code to a Trust SmartHome receiver**

Program the code of this transmitter into the memory of one or several Trust SmartHome receivers. Slide the LEARN switch from [DEL] to [SET] to send an ON-signal. Read the receiver's manual for the code learning procedure.

### **3. Set switch-off delay**

At the "0" setting, the transmitter will send an OFF-signal once a certain light level has been reached (see: "Set light level"). At the 2h-8h setting, the transmitter will automatically send an OFF-signal after 2 up to 8 hours after the ON-signal.

### **4. Close battery cover and snap on the foot stand**

Tighten all screws to ensure waterproofness. Damaging or removing the rubber seal inside the housing can lead to leakage.

### **5. Set light level for the ON signal**

To set the light level, press and hold the [START] button for 3 seconds. The current light level will be stored and the LED on the front will flash 16 times. When the sensor registers the set light level, it will send an ON signal to the receivers it has been assigned to.

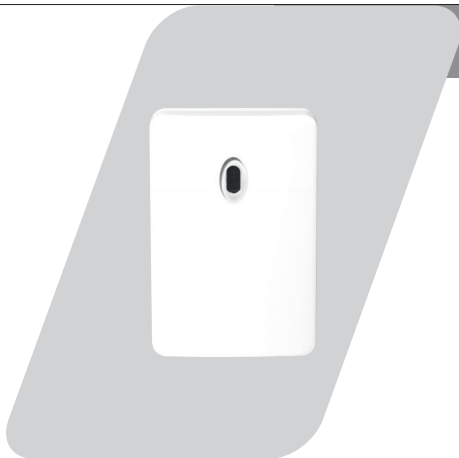
### **6. Place transmitter indoor or outdoor**

Use the foot for horizontal placement or use the rear slots for wall mounting. It takes approximately 30 seconds before the product is operational.

**7. Delete code from Trust SmartHome receiver memory**

Read the receiver's manual for the single code deletion procedure. Slide the LEARN switch from [SET] to [DEL] to send an OFF-signal.

IMPORTANT INFORMATION  
MULTI LANGUAGE



Item 71034 Version 1.0  
Visit [www.trustsmarthome.com](http://www.trustsmarthome.com)  
for the latest instructions

WIRELESS DUSK/DAWN SENSOR

## **EN** ABST-604 WIRELESS DUSK/DAWN SENSOR

Read these simple guidelines. Not following them may be dangerous and faulty installation will invalidate any warranty that may apply to this product.

### **COMPATIBILITY**

This transmitter works with all Trust SmartHome receivers.

### **FUNCTIONALITY**

Dusk/dawn sensor for switching of Trust SmartHome receivers on/off at sunset and sunrise. Also suitable to raise/lower electric screens at sunset and sunrise (electric screens receiver only).

### **TECHNICAL SPECIFICATIONS**

- Battery 2x 1.5 Volt AAA alkaline
- RF frequency 433.92 MHz
- RF range Up to 30 m indoor/70 m outdoor (optimal conditions)
- Protection class IP56
- Switch-off delay 2 up to 8 hours

### **REMARKS**

- This sensor measures the light level approximately every 20 seconds.
- External factors (cloudy or rainy weather, car headlights, street lights, etc.) can influence the observed light level and thereby trigger the dusk/dawn sensor to send on or off-signals. This is also the reason why you should not place the dusk/dawn sensor in direct proximity of the lights it controls.
- When using a switch-off delay (2-8 hours), the sensor will be inactive for 70 minutes after sending the OFF signal. If it's still dark after 70 minutes, the transmitter will send another ON-signal.

### **WIRELESS RADIO SIGNAL**

- The 433.92 MHz radio signal passes through walls, windows and doors.
- Indoor range: up to 30 m. Outdoor range: up to 70 m. (optimal conditions)
- The range is strongly dependent on local conditions, such as the presence of metals. For example, the thin metal coating in Low-emissivity (Low-E) glass has a negative impact on the range of radio signals.
- There may be restrictions on the use of this device outside the EU. If applicable, check whether this device complies with local directives.

**BATTERY**

Remove the battery if the product will not be used for an extended period. Extreme temperatures reduce the capacity and lifetime of the battery. Battery performance is particularly limited in temperatures below freezing.

Replace the batteries when the LED indicator in the dusk/dawn sensor flashes continuously. After replacing the batteries, press the [START] button for 1 second to keep using the same setting or 3 seconds to set a new light level.

Do not crush, burn or shred batteries. Dispose of batteries according to local regulations. Please recycle when possible. Do not dispose as household waste.

**LIFE-SUPPORT**

Never use Trust SmartHome products for life-support systems or other applications in which equipment malfunctions can have life-threatening consequences.

**INTERFERENCE**

All wireless devices may be subject to interference, which could affect performance. The minimum distance between 2 receivers should be at least 50 cm.

**LEGAL INFORMATION**

CE: Trust declares this device complies with the Directives as listed in Section 2 of this document.  
WEEE: Dispose of the device at a recycling centre. More information: [www.trustsmarthome.com](http://www.trustsmarthome.com)  
Warranty information: [www.trustsmarthome.com/warranty](http://www.trustsmarthome.com/warranty)

**REPAIRING**

Do not attempt to repair this product. There are no user-serviceable parts inside.

**WATER-RESISTANCE**

This product is IP56 water-resistant. Make sure not to damage the rubber seal on the inside.

**CLEANING**

Use a dry cloth to clean this product. Do not use harsh chemicals, cleaning solvents, or strong detergents.

**HANDLING**

Do not drop, knock, or shake the device. Rough handling can break internal circuit boards and fine mechanics.

**ENVIRONMENT**

Do not expose the product to excessive heat or cold, as it can damage or shorten the life of electronic circuit boards and batteries.



