

Crystal MBF Series Filter Cartridges

Melt Blown Filters

An economical, disposable, filter element that can be used in a wide range of applications. The Crystal MBF depth filter is constructed of 100% polypropylene media for chemical compatibility with a variety of process fluids. The unique Crystal Core prevents collapse even at elevated temperatures.

Features–Benefits

- Available in nominal ratings from 1 to 75 microns
- Formed Crystal Core for excellent collapse strength
- Graded pore construction for long on-stream life
- Melt blown media resists dirt unloading as differential pressure increases
- Non-shedding
- High dirt holding capacity
- Economical depth filtration
- Thermal bonded endcaps optional
- Free of binders, adhesives and surfactants
- Highly consistent performance

Product Specifications

Media:	Polypropylene
End caps/Center core:	Polypropylene
Gaskets/O-Rings:	Silicone, EPDM, Buna N, Santoprene, Viton, Teflon encapsulated Viton (O-Rings only)
Micron ratings:	1, 3, 5, 10, 20, 30, 50, 75 μ m

Dimensions

Nominal lengths:	9.75", 10", 20", 30", 40", 50" (24.8, 25.4, 50.8, 76.2, 101.6, 127 cm) Other lengths available
Outside diameter:	2.5" (6.35 cm), 2.63" (6.7 cm) Endcapped
Inside diameter:	1.1" (2.79 cm)

Operating Parameters

Maximum differential pressure:	65 psid @ 68°F (4.5 bar @ 20°C) 50 psid @ 100°F (3.4 bar @ 38°C) 25 psid @ 170°F (1.7 bar @ 77°C)
--------------------------------	---

Recommended changeout differential pressure: 35psid (2.4 bar)

*NSF61 applies to NN, P6 and PX styles only



Certifications

USP Class VI - Meets USP Class VI Biological Test for Plastics.

FDA Listed Materials - All Materials comply with FDA Title 21 of the Code of Federal Regulations Sections 174.5, and 177.1520, as applicable for food and beverage contact.

NSF 61 - Certified to NSF/ANSI STD 61 for materials requirements only - Component.

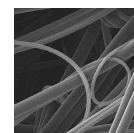


Certified to NSF/ANSI Standard 61 for materials requirements only.

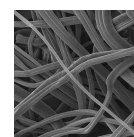
COMPONENT

Typical Applications

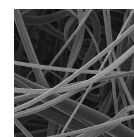
- RO Prefilters
- Wastewater
- Food & beverage
- Chemicals
- Blowdown post filter
- Rad waste
- Aqueous solutions
- Inks



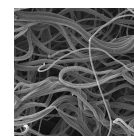
Outer prefilter zone



Inner prefilter zone



Final prefilter zone

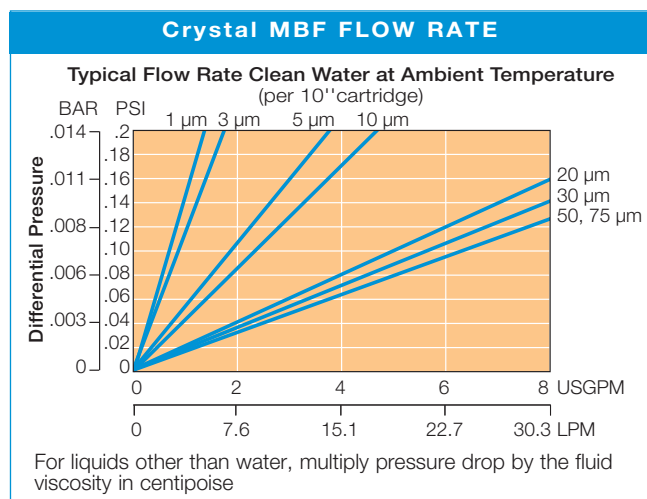


Final filtration zone

Crystal MBF Nomenclature Information

CMBF	10	-20	N	N	-BB
Filter Type Crystal MBF Series Filters		Nominal Length (inches) -4 -5 -9.75 -10 -19.5 -20 -29.25 -30 -39 -40 -50	End Configuration P Double Open End P2 226/Flat Single Open End P3 222/Flat Single Open End P6 Self-Seal Spring on One End P7 226/Fin Single Open End P8 222/Fin Single Open End PX Extended Core N None (Cut Ends) DBG Direct Bond Santoprene Gaskets		Blank -BB Individually bagged Single bulk bag
Retention Rating (microns) 1 20 3 30 5 50 10 75				Gasket or O-Ring S Silicone B Buna-N E EPDM V Viton T Teflon endcap. Viton (O-Rings only) N None	

Example: CMBF 10-20NN-BB



**Give us a call or check out our website
for more information:**

Customer Service: 716-649-2326

Fax: 716-649-9006

Website: www.filtersource.com