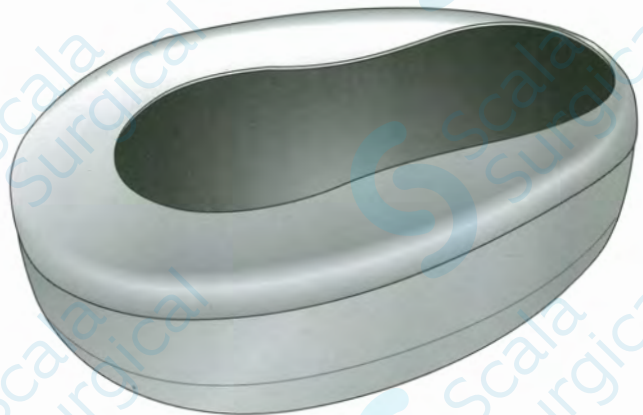


Stainless Steel Hospital Holloware



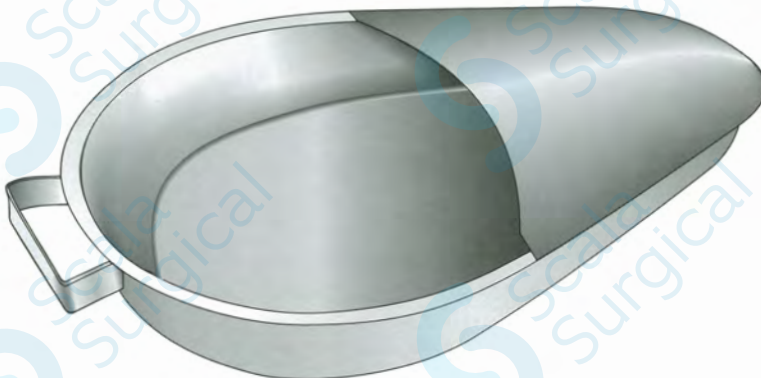
Bed Pan

S-57-2500 Child
S-57-2501 Adult
Perfection Type With lid



Bed Pan

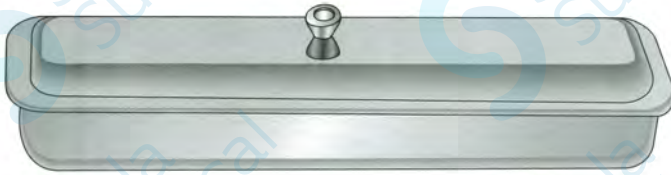
S-57-2503 Child
S-57-2504 Adult
Perfection Type Without lid



Bed Pan

S-57-2506 Child
S-57-2507 Adult
Slipper Shape

Stainless Steel Hospital Holloware



Catheter Tray

- S-57-2509 Small, 23x7.5x3.5 cm
- S-57-2510 Medium, 30x7.5x3.5 cm
- S-57-2511 Large, 43x9x5 cm



Douche Can

- S-57-2513 1.0 Liter
- S-57-2514 2.0 Liter



Fig 1

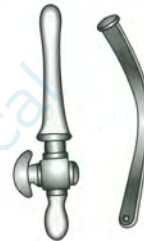


Fig 2



Fig 3

Fittings For Douche Can

- S-57-2515 Rubber Tubing, Fig 1
- S-57-2516 Rectal Nozzle, Fig 2
- S-57-2517 Vaginal Tube, Fig 3



Funnel

- S-57-2519 3"
- S-57-2520 5"
- S-57-2521 6"



Forceps Jar

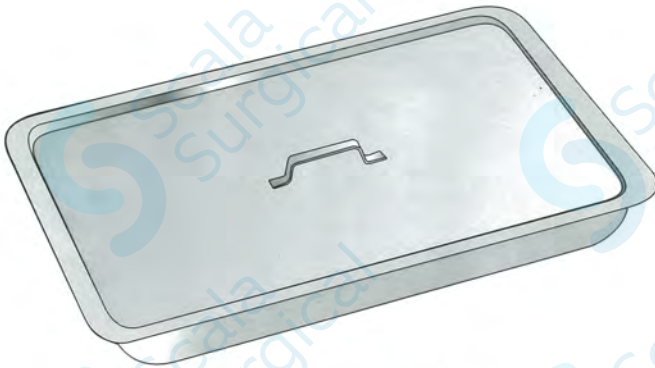
- S-57-2523 50x100 mm
- S-57-2524 75x127 mm
- S-57-2525 100x200 mm

Stainless Steel Hospital Holloware



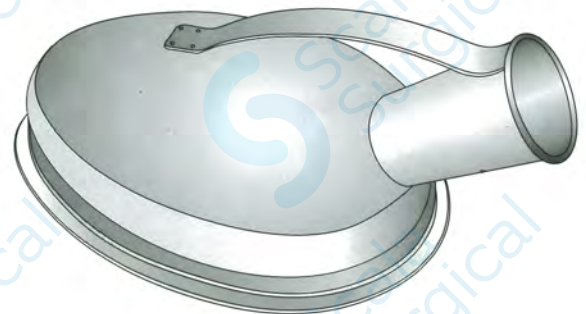
Gallipot

S-57-2530	2 oz	S-57-2535	2 oz
S-57-2531	3 oz	S-57-2536	3 oz
S-57-2532	4 oz	S-57-2537	4 oz
S-57-2533	6 oz	S-57-2538	6 oz
S-57-2534	10 oz	S-57-2539	10 oz
	Without Lid		With Lid



Instrument Tray

S-57-2540	8"x6"x2"	S-57-2545
S-57-2541	10"x8"x2"	S-57-2546
S-57-2542	12"x10"x2"	S-57-2547
S-57-2543	14"x12"x2"	S-57-2548
S-57-2544	16"x14"x2"	S-57-2549
	Without Lid	With Lid



Urinal Male

S-57-2552



Urinal Female

S-57-2554



Dressing Container

S-57-2556	Approximately 4"
S-57-2557	Approximately 5"
S-57-2558	Approximately 7"
S-57-2559	Approximately 8"
	Containers



Bucket

S-57-2562 10 Litres
S-57-2563 12 Litres



Sterilizing Drum

S-57-2566 9½", x 5½"
S-57-2567 9½", x 9½"
S-57-2568 11½", x 5½"
S-57-2569 11½", x 9½"
S-57-2570 13½", x 5½"
S-57-2571 13½", x 9½"
S-57-2572 15½", x 9½"
S-57-2573 15½", x 15½"



Lotion Bowl

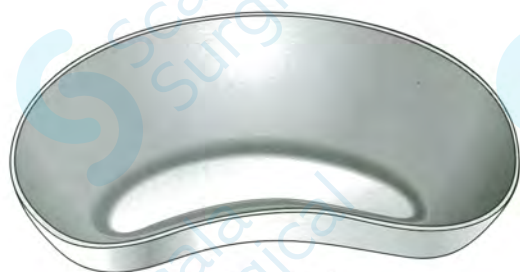
S-57-2575 4"
S-57-2576 6"
S-57-2577 8"
S-57-2578 10"
S-57-2579 12"
S-57-2580 14"



Jug

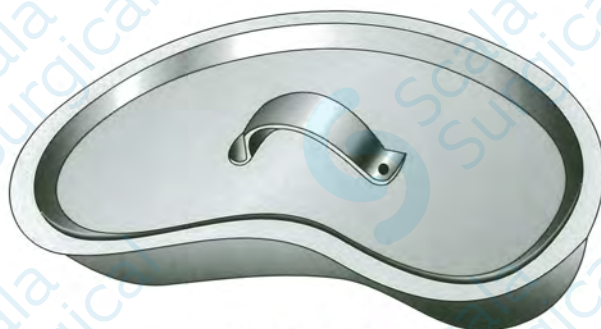
S-57-2582 250 ml
S-57-2583 500 ml
S-57-2584 1000 ml
Graduated

Stainless Steel Hospital Holloware



Kidney Dish

S-57-2590 6"
S-57-2591 8"
S-57-2592 10"
S-57-2593 12"
Without Lid



Kidney Dish

S-57-2594 6"
S-57-2595 8"
S-57-2596 10"
S-57-2597 12"
With Lid



Sputum Cup

S-57-2599
With Lid



Cotton Dispenser

S-57-2600
With Lid



Method
S-57-2602
Cotton Dispenser



Sprit Lamp
S-57-2604