

8-16A Type 2 Current Adjustable Portable EV Charger (with LCD Screen)

Mode 2 EV Charging Cable

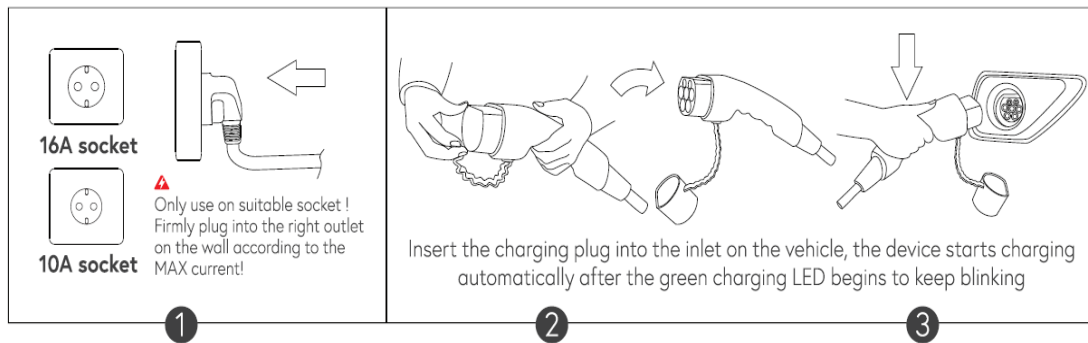
APPLIABLE VEHICLES

There are two different charging standards for EVs, Type 1 and Type 2. Please make sure you are choosing the correct charging plug for your EV.



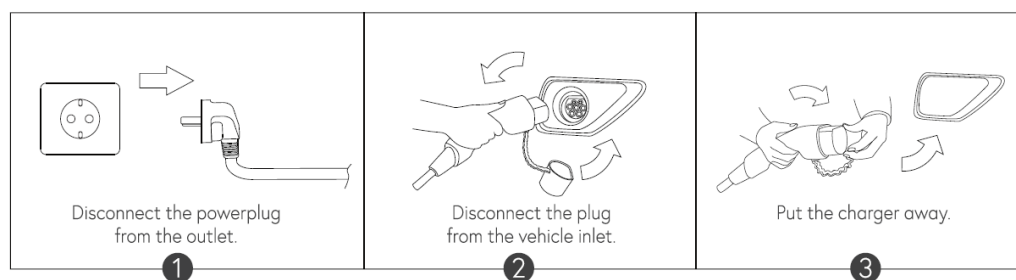
A. How to start charging

1. Firmly insert the power plug into the outlet on the wall. Ensure the outlet socket has a Max charging current of no more than 16A. Short press the switch to select among 8A, 10A, 13A and 16A.
2. Insert the Type 2 plug into the inlet on the electric vehicle. Then you can short press the switch to check the charging time.
3. The device starts charging automatically after the green LED light begins to keep blinking.



B. How to stop charging

1. Disconnect the power plug from the outlet.
2. Disconnect the Type 2 plug from the vehicle inlet.
3. Put the charger away.



GOOD TO KNOW

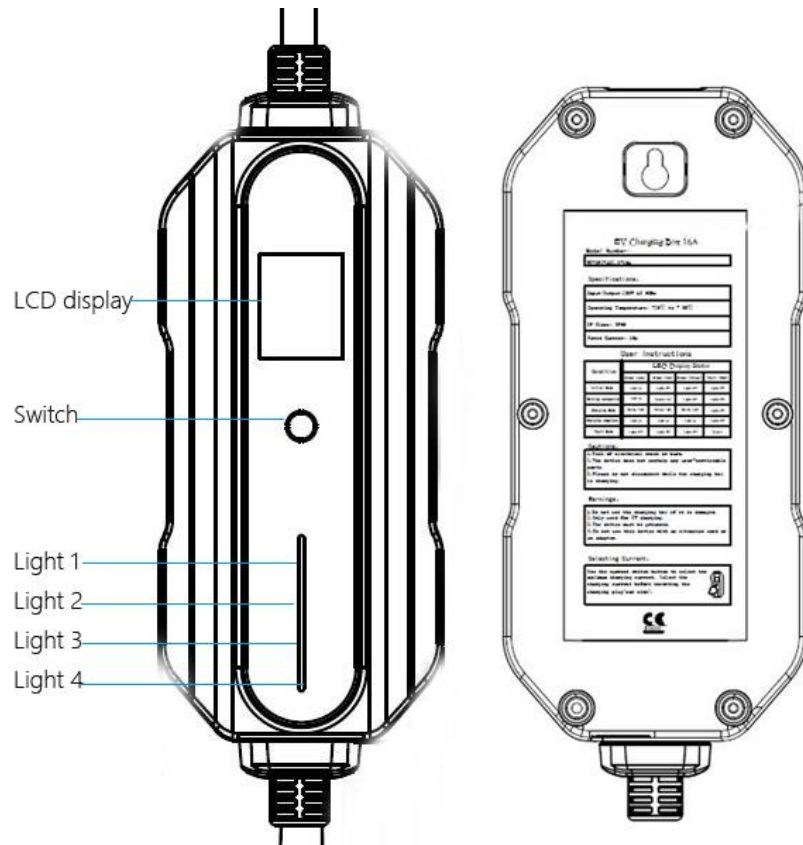
- This is a Mode 2 EV charging cable special for EVs with Type 2 inlets. Don't use it for EVs with different inlet types.
- This cable has a precise internal structure. Any questions, please contact our Customer Service at the first time. Please don't take it apart without any professional technical support.
- Don't use it in water.
- The product is only for EV charging. Please don't use it in any other

occasions, including hauling, binding and so on.

- Do not use the charger if the controller box is damaged.
- The device must be grounded.
- Do not use this device with an extension cord or an adapter.
- Mind the risk of electrical shock or burn.
- The device does not contain any user-serviceable parts.
- Please do not disconnect the plugs while the ev charger is charging the vehicle.

Charging Status Reference Table

Working Condition	LED Light Display Status			
	Light 1 (green)	Light 2 (green)	Light 3 (green)	Light 4 (red)
Power Connected	ON	OFF	OFF	OFF
Normal Charging	FLASH	FLASH	FLASH	OFF
Charging Faults	OFF	OFF	OFF	ON
Charging Finished	ON	FLASH	OFF	OFF



Product Parameters

Service life: >10000 times

Insulation resistance: > 1000M Ω

Terminal temperature rise: <50K

Withstand voltage: 2000V

Contact impedance: 0.5m Ω

MaxVibration resistance: Meet JDQ 53.3 requirements

Working temperature: -30°C ~+ 50°C

Shell Material: Thermo Plastic (Insulator inflammability UL94 VO)

Contact Pin: Copper alloy, silver or nickel plating

Sealing gasket: Rubber or silicon rubber

Inlet cable spec: 3*2.5mm²

Outlet cable spec: 3*2.5mm²+2*0.5mm²

Cable diameter: 12(mm) / 0.47(in)

Certificate: TUV/ RoHs

Power plug: Schuko

EV charging plug: Type 2

Current: 8A 10A 13A 16A

Voltage: 250V

Power: ≤3.7 kw

Length: 5m (16.4ft) or customized

Cable: Black straight cable

Controller type: LCD screen

Warranty: 2 years

Protection level: IP66

Charging protection: Over-current protection, over-voltage protection, under-voltage protection, leakage protection and overheat protection integrated.

Power-on current: The current that the user has set for the last charging.