

50 Gallon V2 Enclosure

36x18x18

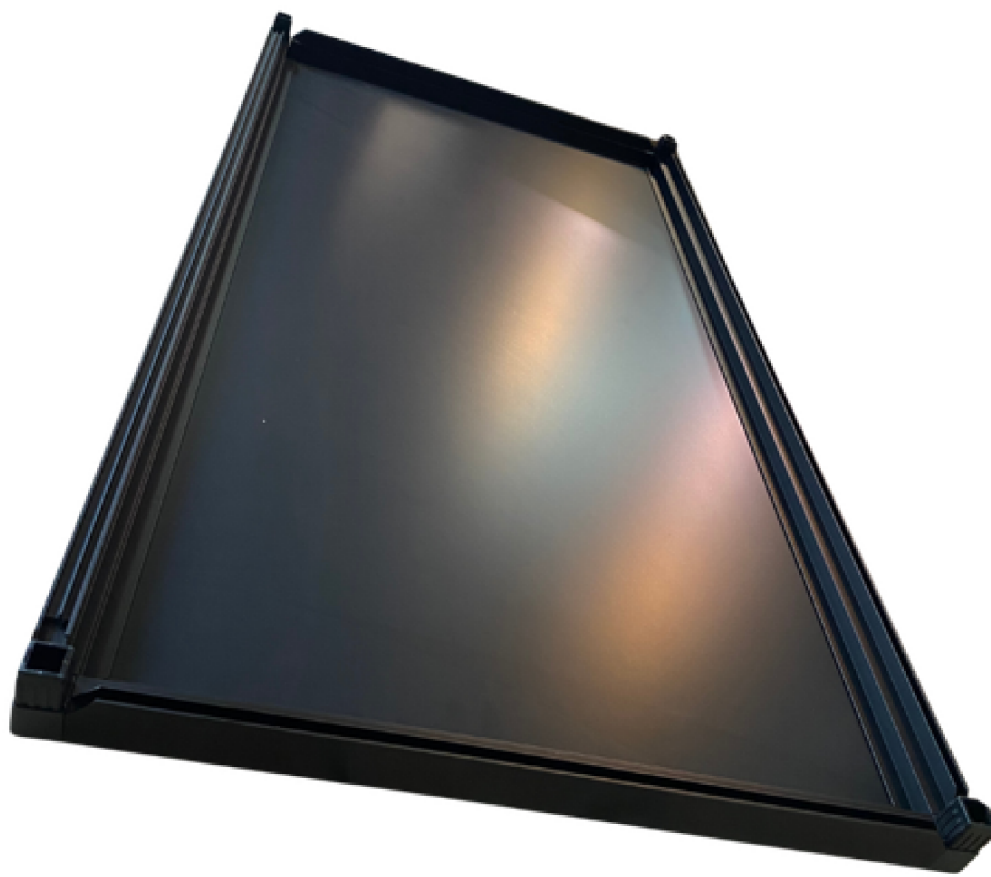


- A. 36" x 18" (Back) Panel x1**
- B. Fully Assembled Bottom x1**
- C. 18" x 18" (Side) Panel x2**
- D. Glass Door x2**
- E. Substrate Panel x1**
- F. Fully Assembled Screen Top x1**
- G. N/A**
- H. Short L-shaped Bar, Single Track x2**
- I. Short L-shaped Bar, Double Track x2**
- J. Cable Port Covers x2**
- K. Door Handle x2**
- L. Door Handle Screws x4**
- M. Door Handle Washers x4**
- N. Door Handle Protector, Rubber x2**
- O. Mallet x1**
- P. Locking Pin x1**
- Q. Substrate Panel Track x3**

A. 36" x 18" Panel x1
Actual Dimensions: 34 11/16" x 16 11/16" x 3/16"
Back Panel



B. Fully Assembled Bottom x1
w/ Corner Connectors Attached



**The back panel fits perfectly
inside the bottom assembly, be
sure to lift it out carefully! It is
easily missed.**

C. 18" x 18" (Side) Panels x2
Actual Dimensions: 16 11/16" x 16 11/16" x 3/16"
Right/Left Side Panels



D. Glass Door x2
Actual Dimensions: 16 4/16" x 17 12/16" x 2/16"



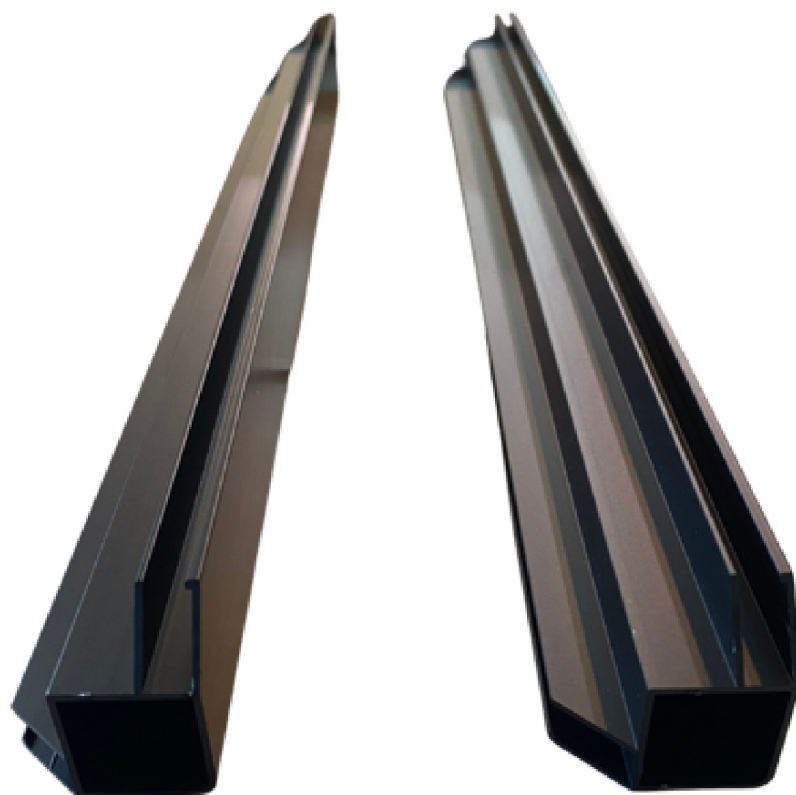
E. Substrate Panel x1
Actual Dimensions: 35 2/16" x 3 9/16" x 3/16"
Acrylic



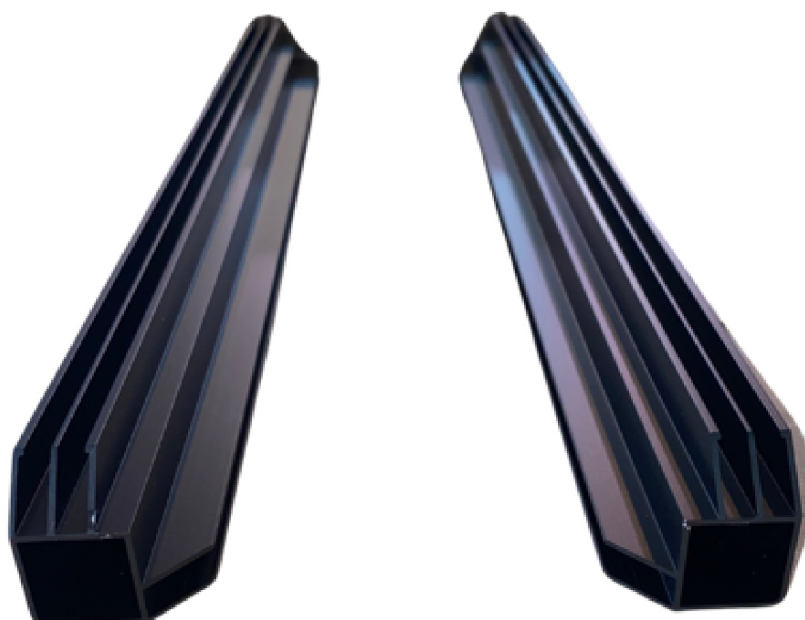
F. Fully Assembled Screen Top x1
Actual Screen Dimensions: 33 14/16" x 15 14/16"
1/8" Wide Mesh Holes



H. Short L-shaped Bar, Single Track x2
Actual Length: 16 1/2"



I. Short L-shaped Bar, Double Track x2
Actual Length: 16 1/2"



Note on next page



Double track bars for the FRONT of the enclosure have stickers that say “THIS IS THE FRONT”, but be aware that there should be double tracks!

J. Cable Port Covers x2



K. Door Handle x2



L. Door Handle Screws x4



M. Door Handle Washers x4



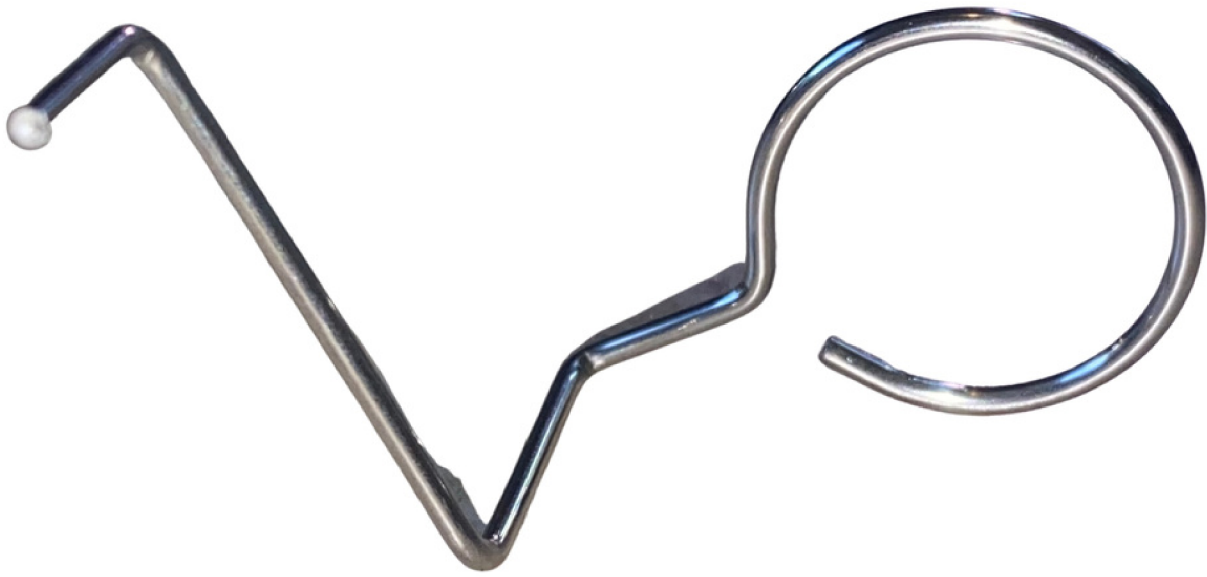
N. Door Handle Protector, Rubber x2



O. Mallet x1



P. Locking Pin x1



Q. Substrate Panel Track x3

