

## DoseValet™ Autofill

Item No. 345DVPA

### Precise Sink Management System with the touch of a button

The DoseValet™ Autofill is a major advancement in the manual instrument cleaning process. With the press of its start button, DoseValet™ Autofill automatically fills the instrument sink, tub or basin with the precise amount of instrument cleaning detergent and water to the correct working level. The large LCD display provides real time alarms for solution temperature, dosing amounts, out of chemical status and sink activity. The DoseValet™ Autofill includes soak timer, which allow users to set a specific amount of time for the medical instruments to soak before the final cleaning and rinsing stage. The unit also includes a USB port for downloading management reports.

#### Features



- Automatic sink filling/detergent dosing
- Smart water/detergent blending technology conserves water and assures concentration of the instrument cleaning solution is precise
- Selectable chemical dilution factors and bath volumes
- Optional backflow preventer
- Locking, waterproof stainless steel cabinet
- Reduced cleaning labor as detergent solutions are always at the proper concentration; one touch automatic filling allows cleaning technicians to perform other tasks
- Management reports allow managers to monitor how frequently detergent solutions are changed
- Eliminates manual detergent dosing
- Water tempering valve controls cleaning solution to desired temperature



Unit mounted above sink with solution discharge tube placed in sink.

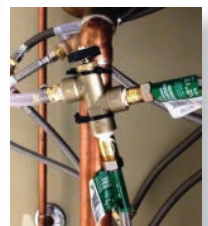


Technician can take care of other tasks while sink automatically fills.

SPECIFICATIONS	
Dimensions	.6" H x 7" W x 6-1/4" D 15.2 cm x 17.8 cm x 15.9 cm
Case Rating	IP-51
Dosing Pump Flow Rate	.250 ml/min.
Power Supply/Voltage	Wall Mount Type, IN: 110-240 VAC 1A 50-60 Hz Out: 24 VDC 1.67A
Chemical Compatibility	Industry standard detergents and disinfectant cleaners.
Unit Weight	11 lbs, 5 kg
Temperature Sensor	Max temperature = 257° F, 125° C
Approvals	Pending  

Dispenser S/N: B45702					
Report Date: 08/12/13					
From Date: 08/09/13					
To Date: 08/12/13					
Date	Time	Volume	Temp.	Errors	
08/09/13	03:24:58PM	025	078		
08/09/13	03:25:10PM	000	078	Out of Det	
08/09/13	03:25:21PM	025	079		
08/09/13	03:25:34PM	025	078		
08/09/13	03:25:46PM	025	079		
08/09/13	03:25:58PM	025	079		
08/09/13	03:26:10PM	025	079		
08/09/13	03:26:22PM	025	078		
08/09/13	03:26:34PM	025	078		
08/09/13	03:26:46PM	025	079		
08/09/13	03:26:58PM	025	065	Temp Alert	
08/09/13	03:27:10PM	025	079		
Total Usage:		013.4 Liters			

Sink Management Reports can be downloaded via the USB port.



Water tempering valve controls cleaning solution temperature.

continued

# DoseValet™ Autofill

---

## Directions for Use

**Caution:** Personal protective equipment should be worn when operating DoseValet™ Autofill.

1. Power up unit
2. Place the solution discharge tube in the appropriate sink/tub
3. Plug sink drain
4. Select the START button for the solution desired
5. Press the STOP button if a partial solution is needed or to interrupt/stop solution delivery

## ALARM MESSAGE PROCEDURES:

### LOW DETERGENT

1. A "detergent low" message will appear anytime the chemical solution is low
2. Turn power off
3. Carefully remove level float and suction tube from container
4. Replace with new detergent container
5. Reinsert suction tube and float into a new detergent container
6. Press START to fill sink/tub

### LOW WATER PRESSURE

1. A "check water supply" message will appear anytime the water supply is disrupted or reduced to the system.
2. Check water supply valve on/off position or water source for disruption
3. After water is restored drain sink/tub of partial solution and press START button for dosage



393 Sagamore Avenue, Mineola, New York 11501  
1-800-537-8463 • [www.ruhof.com](http://www.ruhof.com)

