

# Body Worn Camera User Manual



V1.0

# Catalogue

1. Product specification .....	4
1.1 Product application .....	6
2.Host operations guide.....	6
2.1 State description.....	8
1.1 Power ON/OFF .....	9
1.2 video recording .....	9
1.3 sound recording.....	10
1.4 One key switch .....	10
1.5 take a picture.....	10
1.6 Playback.....	10
1.6.1 Video playback .....	10
1.6.2 Audio playback.....	11
1.6.3 Photo playback.....	11
1.7 set up.....	11
1.7.1 Video resolution .....	12
1.7.2 Video code rate .....	12
1.7.3 Transmission resolution .....	12
1.7.4 Network frame rate.....	12
1.7.5 Network transmission rate.....	12
1.7.6 Video mode .....	12
1.7.7 Cyclic coverage .....	12
1.7.8 Recording segmentation .....	13
1.7.9 Video prerecording.....	13
1.7.10 Photo size.....	13
1.7.11 Photo quality.....	13
1.7.12 Photo mode .....	13
1.7.13 Continuous number of photographs .....	13
1.7.14 Photo interval .....	13
1.7.15 Automatic closing screen .....	13
1.7.16 auto shut off.....	13
1.7.17 Key volume.....	14
1.7.18 Loudspeaker volume .....	14
1.7.19 vibroswitch.....	14
1.7.20 Voice broadcast .....	14
1.7.21 Infrared switching .....	14
1.7.22 Guang Min induction .....	14
1.7.23 4G switch.....	14
1.7.24 WIFI switch.....	14
1.7.25 AP .....	14

1.7.26	Restoration of factory setting .....	14
1.7.27	Language .....	15
	The language currently supports .....	15
	switching between Chinese and English .....	15
1.7.28	Set the password .....	15
2.8.29	Group Call .....	15
1.8	system info .....	15
1.8.1	Central information .....	15
1.8.2	4G state .....	15
1.8.3	GPS state .....	16
1.8.4	WIFI state .....	16
1.8.5	facility information .....	16
2	Product installation .....	16
3.1	container loading list .....	16
3.2	Equipment upgrade .....	16
2.1	Installation and use of Management Software for body worn camera .....	17
3	Software introduction .....	17
4.1	Software overview .....	17
3.2	Software installation and operation .....	18
4	Software operations guide .....	19
4.1	essential information .....	19
4.2	User information .....	20
4.3	Codingparameter .....	20
4.4	4G parameter .....	21
4.5	WIFI parameter: .....	21
4.6	Central parameters .....	22
4.7	language selection .....	23
5.9	Enter U disk mode .....	23
6.	Use of attention .....	23
6.1	Unable to land .....	23
6.2	Parameter preservation problem .....	24
6.3	device reset .....	24

## 1. Product specification

The main features of the body worn camera: video recording, video capture, wifi link(Network Version), Its main functions are listed in the table.

specification		
basic configuration	Slug	Amba A12 chip
	Sensor	IMX323
	display screen	2.0 inch
	camera lens	120 ° wide angle
	levels of protection	IP66
	Fall grade	2M
	locate function	Built-in GPS positioning module, real-time positioning
	TF card	32GB/64GB/128G/256G/512G
	WIFI function	Support for 802.11 b/g/n protocol 2.4GHz
	4G network	TD-SCDMA / EVDO / WCDMA / LTE-TDD FDD
image parameter	picture pixel	Local Version:32M/16M/8M/4M/2M/1M Network Version: 8M/4M/2M/1M
	Shutter control mode	Electronic shutter
	Focus	2.8mm
	Exposure mode	voluntarily
	Photo file format	JPEG
Video&Audio parameter	Resolution	Main-Stream(video record): 1080P/720P Sub-Stream(video trans): 720P/VGA
	Frame rate	30fps/25fps/20fps/15fps/10fps/5fps
	Quality	High / medium / low setup
	Video Compression Standard	H.264 high profile

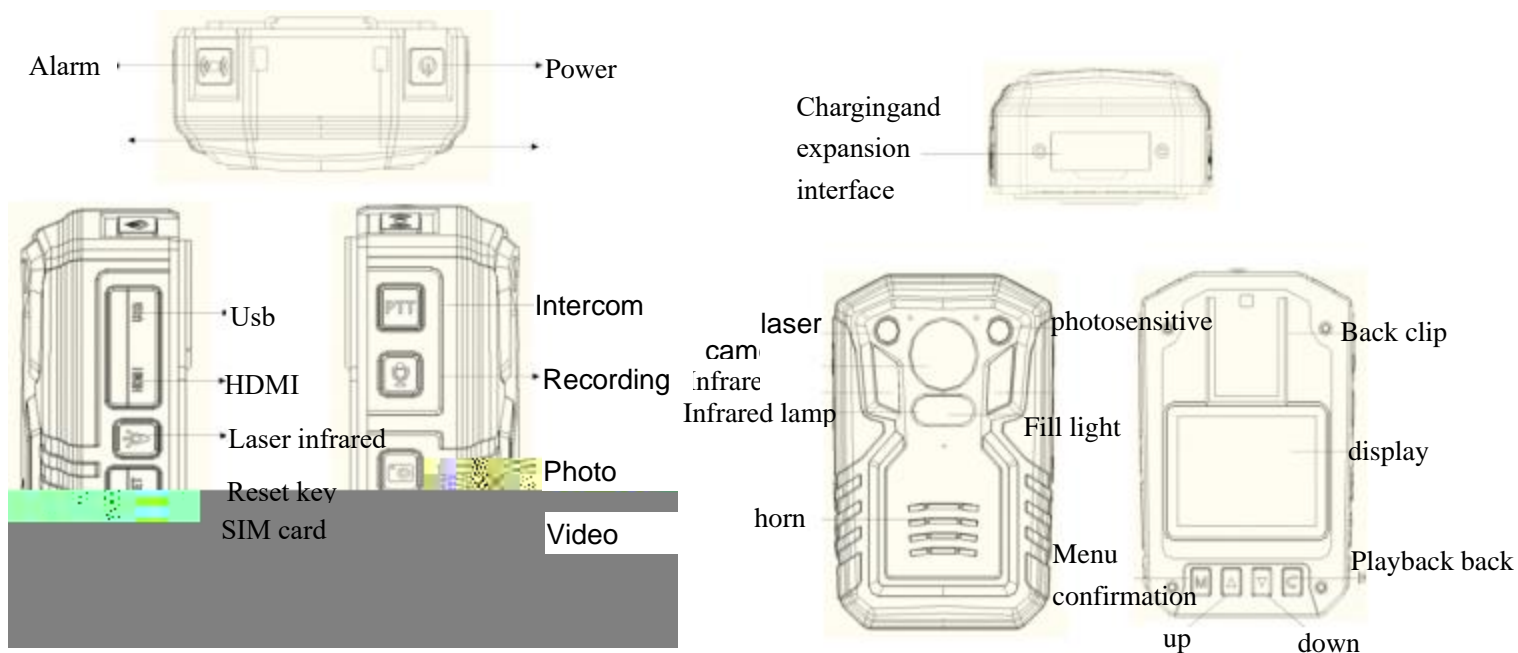
	Video compression format	MP4
	Audio compression standard	AAC
	Audio input	High quality microphone
	Continuous recording time	Video 10 hours, WIFI Internet 8 hours)
size	Volume (mm)	96*62*34mm
	weight	about 200g
power	Battery capacity	5000mAh
	charging time	About 4 hours
	Charging mode	USB charging / data acquisition station charging
Auxiliary light source	Infrared complementary lamp	support
	Bright LED white light	support
	Laser positioning	support
	watermark	Device ID, Constable ID, time and date
	Language	English
	Interface	Mini USB
	LED indicator lamp	Charge indication, video, recording, online
	user's manual	instructions
appendix	clamp	360 degree rotating back clip
	Data line	Mini USB
	adapter	5V/2A
work environment	working temperature	-20℃~+55℃
	Storage temperature	-40℃~+70℃
	Working humidity	40%--90%
software	Management software	Green professional PC end management software
	Operating system	Windows XP /Win 7/Win 8/Win 10

## 1.1 Product application

The high-definition body worn camera is a highly integrated device specially developed for the law enforcement industry. The device supports photo taking, video recording, recording, local storage, infrared night vision, laser positioning and WIFI wireless transmission(network version). Video can be uploaded directly to the background through WIFI or AP network environment(network version). Users can view the video returned from the front end through mobile phone PC client. It's the scene law enforcement good helper.

## 2.Host operations guide

Introduction to the keys of the whole device



## Key instruction

Key name	icon	method	function
Power key		Short press	On / off screen In the shutdown state, no effect.
		Long press	A long press of 3 seconds can turn on / off the device.
Intercom key		Long press	Activate the intercom (network version)
Video key		Short press	In boot state, short press video recording, again short press stop recording; shut down state, short press boot and turn on video















is full, the video will be automatically overwritten. Tagged focus files will not be overwritten)

### 1.7.8 Recording segmentation

The video segment is divided into 3 minutes, 5 minutes, 10 minutes, 15 minutes, default 3 minutes.

### 1.7.9 Video prerecording

Video pre-recording enabled 15 seconds of pre-warning time.

### 1.7.10 Photo size

Photo size support 32M. 16M.12M. 8M. 4M.2M.1M

### 1.7.11 Photo quality

Photo quality support high, medium, low three options.

### 1.7.12 Photo mode

The camera mode is divided into single shot mode, the camera and the timing of continuous shooting mode.

### 1.7.13 Continuous number of photographs

The number of continuous support 5, 10, 15, 20, 25

### 1.7.14 Photo interval

Photo intervals support 3 seconds, 5 seconds, 10 seconds, 30 seconds and 60 seconds

### 1.7.15 Automatic closing screen

Auto-turn-off support option to turn off, 30 seconds / 1 minute / 3 min / 5 min.

### 1.7.16 auto shut off

Setup		3/5
Timelapse		5 sec
LCD Control		30 sec
Auto Poweroff		Off
Tones Volume		80
Spk Volume		80
Vibrate		On

No video on the device.

And network transmission, the device automatically shuts down after the set time. You can Select close 3 minutes for 5 minutes and 10 minutes for default.

### 1.7.17 Key volume

Key output volume adjustable

### 1.7.18 Loudspeaker volume

Horn output size adjustable

### 1.7.19 vibroswitch

Keystroke shake prompt can be turned on or off

### 1.7.20 Voice broadcast

Support voice broadcast on and off, when turned on, voice broadcast IDs, video prompts

### 1.7.21 Infrared switching

Infrared switching supports manual and automatic modes

### 1.7.22 Guang Min induction

Guang Min induction support high, medium, low choice, default high

### 1.7.23 4G switch

4G optional open and close, by default, the power consumption of the device will be increased, and the working time of the device will be shortened.

### 1.7.24 WIFI switch

WIFI is optional to open and close, and after opening, you can choose to do STA mode or hot spot mode.

### 1.7.25 AP

After the AP is turned on, the device will enter hot spot mode, and the WIFI needs to be turned on to open the hot spot.

### 1.7.26 Restoration of factory setting

Restore the factory setting to restore all parameters to the default value.

Setup		4/5
Voice Prompt	On	
4G	On	
WIFI	On	
WIFI AP	Off	
Bluetooth	Off	
Bluetooth Pairing	On	

Setup		5/5
Default Settings	On	
Language	English	
Password	Off	
Secretshoot	Off	
Talkback	Enter	
Cloud Backup	Off	

### 1.7.27 Language

The language currently supports

switching between Chinese and English

### 1.7.28 Set the password

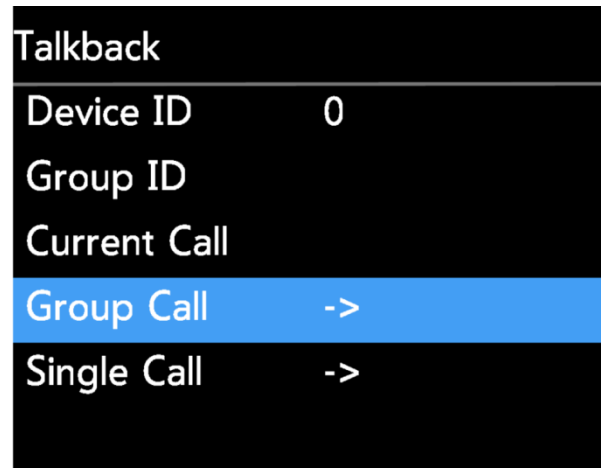
To open or close, enter the login password

( default:000000)before setting up

### 2.8.29 Group Call

We support Group call and Single call, you can select from the menu.

Please reference to the picture below:



## 1.8 system info

The system information is used to display the real-time working state of the device and peripheral equipment, mainly including the central connection state and the GPS state and the WiFi state.

4G dial status and device information.

Device Info 1/5	Device Info 2/5	Device Info 3/5
Video Server: 35.200.244.125:06608 SN: (online) 1234567	4G: Valid SIM: Invalid 4G Signal: 0 Dialup IP: 0.0.0.0 4G Type: MEIGE_SLM750	GPS: Valid GPS Star: 4 Speed: 0 Longitude: E113.927963 Latitude: N22.631975 Altitude: 0

### 1.8.1 Central information

Server information, including central IP and ports, as well as device numbers and online information.

### 1.8.2 4G state

4G status is mainly related to the self-checking and dialing of 4G module, including whether the 4G module exists or not, whether the SIM card has 4G signal value, whether the dial-up is successful, and so on.

### 1.8.3 GPS state

The GPS state includes the existence of the GPS module, whether it is located, the number of satellites, and the latitude and longitude of the satellite.

### 1.8.4 WIFI state

The WIFI state includes the existing state of the WIFI module, the signal strength of the hot name WiFi and the IPs after the successful connection.

### 1.8.5 facility information

Device information is mainly used to display device version information and device unique IDs.

Device Info 4/5		Device Info 5/5	
WIFI:	Valid (STA)	HW Ver:	V0.002
Hotspot:	TEST	SW Ver:	V1.027_181131
HotPwd:	88888888	UUID:	00a1234d00000249
WIFI SSID:	TJSX	BAT Voltage:	3.68V
WIFI IP:	192.168.1.115		
Bluetooth:	Unconnected		

## 2 Product installation

### 3.1 container loading list

Order number	Name	Number quantity
1	main engine	1
2	back splint	2
3	USB data line	1
4	The power adapter	1
5	instructions	1
6	Charging base	1

### 3.2 Equipment upgrade

- a) First, the device is turned on and connected through the body worn camera tool. After logging in successfully, the device enters U disk mode.
- b) Copy the upgrade files firmware\_1204\_dvr.bin or firmware\_1205\_dvr.bin to the TF card root directory;



- c) Unload TF card unplug USB line, the equipment automatically restart and upgrade processing, the system will restart automatically after the upgrade is completed;
- d) After a successful upgrade, you can see the new version of the software as a successful upgrade through the device's system information.
- e) Upgrade as far as possible to ensure that the battery is fully powered or connected to the adapter.

## 2.1 Installation and use of Management Software for body worn camera

# 3 Software introduction

## 4.1 Software overview

The management software of the body worn camera (hereinafter referred to as the management software) is an application software developed by our company to cooperate with the high-definition body worn camera. It communicates with the body worn camera through the USB of the computer and realizes the user parameters. The acquisition and configuration management of video parameters, 4G parameters and WiFi parameters and central parameters. After logging in successfully, the device can enter U disk mode, and the playback and export of video data can be realized.

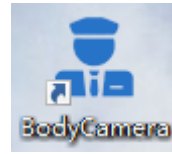
### Software features: :

1. Device logon logout management supports user password modification;
2. It supports the acquisition and modification of the coding parameters.
3. Time of synchronizing the body worn camera ;
4. The acquisition and modification of user information;
5. 4G acquisition and modification of network parameters such as WiFi;
6. Acquisition and modification of video parameters;
7. Acquisition and modification of central parameters;

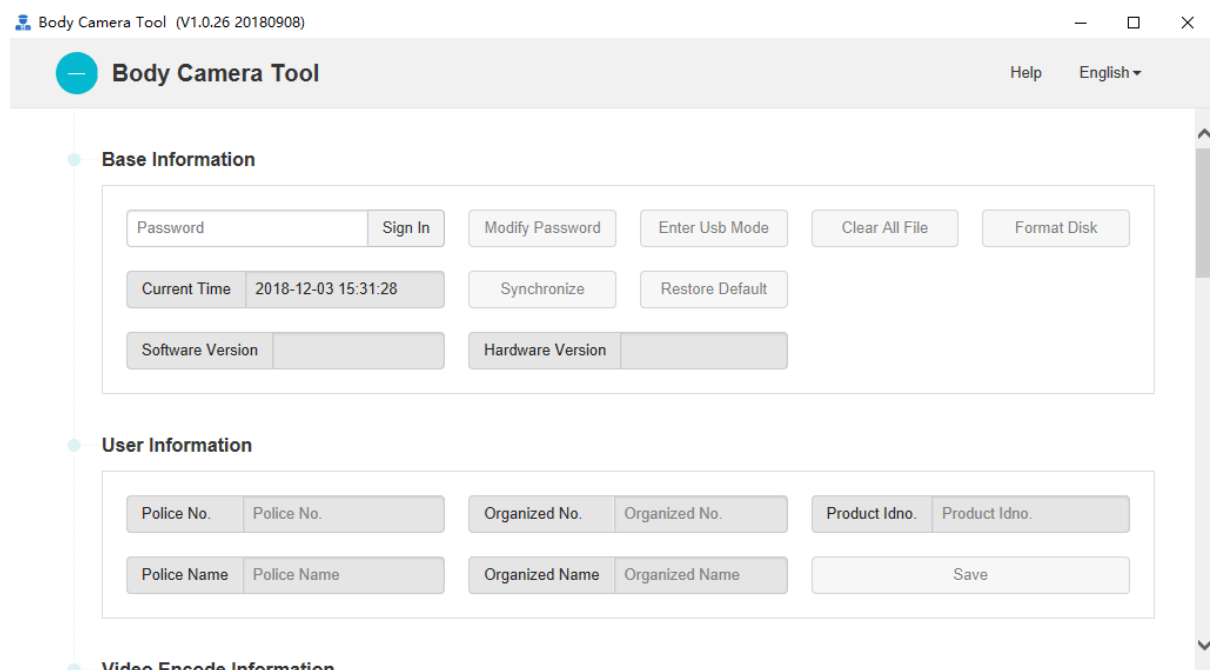
### 3.2 Software installation and operation

- First access to the software installation package by CD-ROM or

mail BodyCamera\_XXXXXXX.exe;

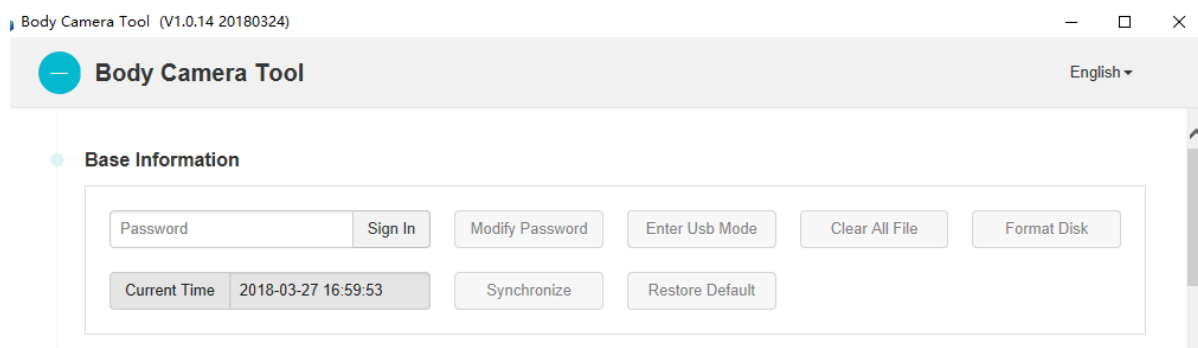


- Double-click to run or right-click to run the program as an administrator;
- Click next to complete the installation, the user can choose the installation directory during the installation process.
- Find the install software icon on the desktop or program startmenu, and double-click to run, as shown in the following figure:



## 4 Software operations guide

### 4.1 essential information



**Note:** first use the USB wire to connect the device to the computer.

Login: enter the password, click login, the default password is 000000;

Change password: click change password, the user can modify login password 6 for the number;

Enter the U disk: click into the U disk mode and click to determine the device for the U disk mode, you can find a new disk on the computer;

Clear all documents: clear all video files in the law enforcement instrument;

Formatted disk: format the disk of the law enforcement instrument;

Synchronous time: use computer time to calibrate the time of the law enforcement instrument;

Restore the default settings: restore the factory settings;

## 4.2 User information

**User Information**

Police No.	Police No.	Organized No.	Organized No.	Product Idno.	Product Idno.
Police Name	Police Name	Organized Name	Organized Name	Save	

Alarm number: set up a Police Officer number;

Unit number: set user unit number;

Product serial number: set up product serial number;

Name: set user name;

Unit name: set up user unit name;

## 4.3 Codingparameter

**Video Encode Information**

Record Bitrate	1080P(8M)	Record Framerate	30	Channel	CH1
Live Bitrate	720P(1.8M)	Live Framerate	5	Save	

Video bit rate: select video resolution and bit rate, 1080P and 720P, and three bit rate optional;

Video frame rate: optional frame rate of 5: 10, 15, 20, 25, 30, etc.;

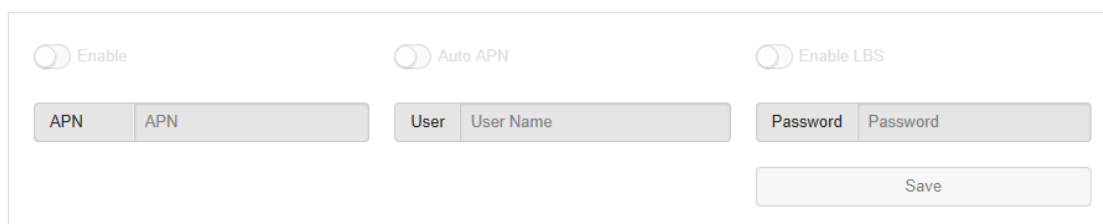
Choice of channels: only multiple channels can be selected;

Network transmission rate: select the resolution and bit rate for network transmission;

Network frame rate: select frame rate for network transmission;

## 4.4 4G parameter

### 4G Information



The 4G Information configuration interface includes the following elements:

- Three toggle switches at the top: **Enable**, **Auto APN**, and **Enable LBS**.
- Three input fields below the toggles:
  - APN**: A field with a label 'APN' and an input box containing 'APN'.
  - User**: A field with a label 'User' and an input box containing 'User Name'.
  - Password**: A field with a label 'Password' and an input box containing 'Password'.
- A **Save** button located at the bottom right of the configuration area.

Enable : Turn on or off 4G functions ;

Automatic identification: set the access point information of the operator automatically;

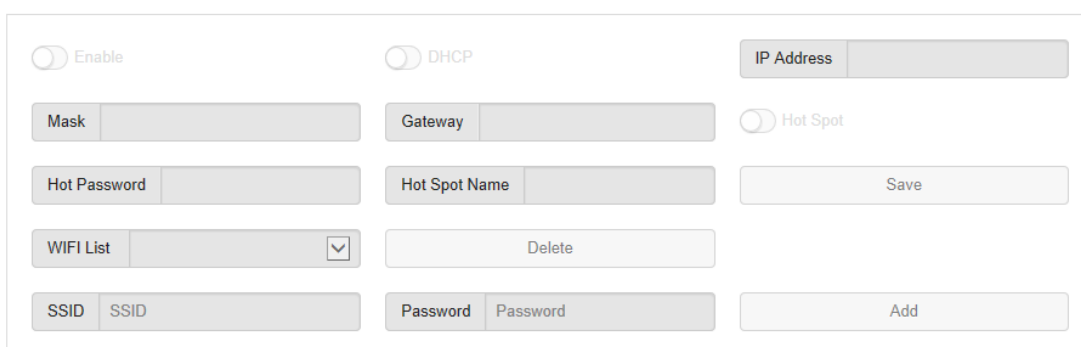
APN: set up dial-up access point information, different operators have different names;

User: set up the user name for SIM card dialing, default is empty;

Password: set SIM card dial password, default is empty;

## 4.5 WIFI parameter:

### Wifi Information



The Wifi Information configuration interface includes the following elements:

- Two toggle switches at the top: **Enable** and **DHCP**.
- An **IP Address** input field.
- Fields for **Mask** and **Gateway**.
- A **Hot Spot** toggle switch.
- Fields for **Hot Password** and **Hot Spot Name**.
- A **Save** button.
- A **WIFI List** dropdown menu and a **Delete** button.
- Fields for **SSID** and **Password**.
- An **Add** button.

Enable: turn on or off the WIFI function;

Hotspots: WiFi works in AP mode, doing hot spots, the premise is to enable WiFi first;

Hot spot name: set the hot spot name, open the hot spot effective;

Hot spot password: set the hot spot access password, open the hot spot effective;

WIFI list: shows the WIFI hot spot name, the maximum support 8;

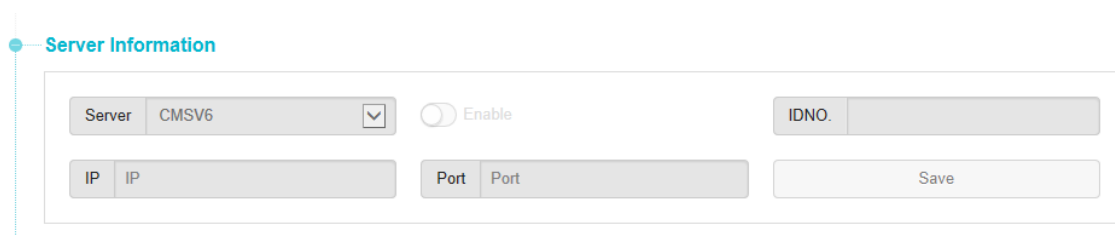
Delete button: select the hot spot name on the left, click to delete the corresponding hot spot;

SSID: sets the hot spot name to connect to;

Password: sets the key password to connect to;

Add button: add the hot information on the left to the device;

## 4.6 Central parameters



The screenshot shows a configuration window titled "Server Information". Inside the window, there are several input fields and controls: a "Server" dropdown menu currently showing "CMSV6", an "Enable" toggle switch, an "IDNO." text input field, two "IP" text input fields, two "Port" text input fields, and a "Save" button at the bottom right.

Enable: turn on or off the central server connection function;

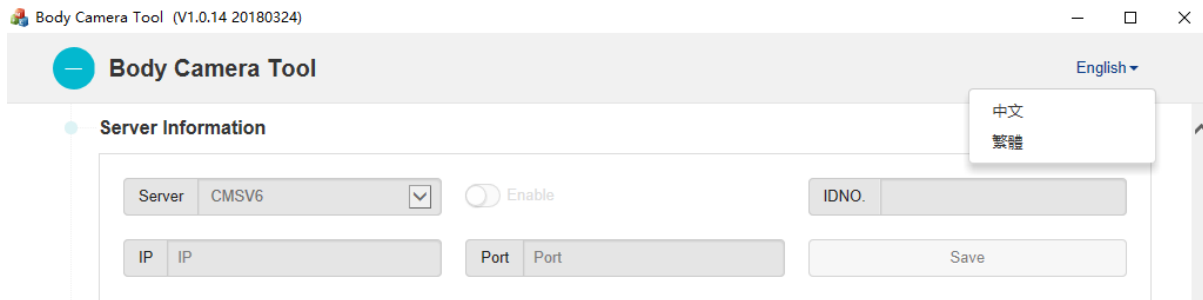
Server: set the IPs of the server;

Port: set the connection port of the server;

Number: set the unique number of the device to report to the server;

; Save button: save parameter;

## 4.7 language selection



Click on the Chinese button in the upper right corner, pop up the options shown in the picture, choose according to the user's needs, currently support three languages: simplified Chinese, traditional Chinese, English, other languages need to be customized according to the needs of the customer.

## 5.9 Enter U disk mode

- First, enter the password to login, after successful login, click on "U disk mode" to enter the following figure:
- Click "login", the device enters the U disk and exits the login. The user can no longer configure the parameters, as shown in the following figure:
- 
- On my computer you can see the U disk:

## 6. Use of attention

### 6.1 Unable to land

- First check whether the equipment is on normally;
- Check the connection of USB line;
- Pull off USB to reconnect ;

## 6.2 Parameter preservation problem

- **Some parameter settings do not take effect immediately and you need to restart the device to take effect;**

## 6.3 device reset

When the device is abnormal or crashes, press the reset key, and the device can return to normal, as shown in the figure:

