



Industrial Labelling Machine

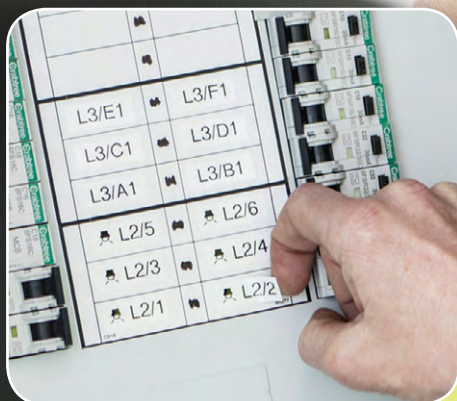
Create professional, durable, laminated labels for cables, faceplates, consumer units and other electrical and datacom installations.

- Dedicated functions to create the most common label types
- 200 symbols including common electrical/datacom symbols
- Includes tape cassette, AC adapter and carry case
- Prints 3.5, 6, 9 & 12mm labels



The PTE110VP and its durable tape supplies help ensure compliance with the identification requirements of the wiring regulations.

P-touch
E110VP



P-touch E110VP

Create labels in various colour combinations and widths that last for many years with this professional label printer. With dedicated functions to make common labelling tasks quick and easy, and with everything supplied in a hard carry case, the PTE110VP is an invaluable tool for electricians and other professional trades.



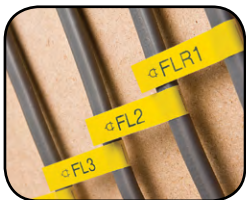
Fast 20mm / second print speed

Gets the job done quickly by printing each label in just a few seconds.



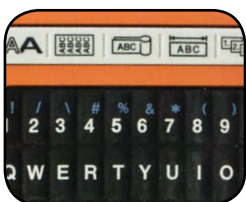
Cable wrap

Identify cables quickly with easy-to-read labels.



Cable flag

Select your cable diameter to print the correct length of label.



Dedicated number keypad

Speeds up the input of numeric labels.



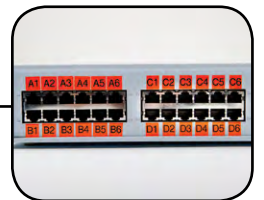
Graphic display

Easily view symbols and preview your label before printing.



Face plate

Label socket outlets, network points and telephone extension faceplates for quick identification.



Sequential numbering

Print labels containing a sequence of numbers or letters.



200 built-in symbols

Includes common electrical, datacom, AV, security and safety symbols.

P-touch laminated labels – designed to last

Brother P-touch laminated TZe tapes are available in many different colours and sizes. The thermal transfer ink is sandwiched between two protective layers of PET (polyester film), protecting the text against the effects of liquids, abrasion, temperature, chemicals and sunlight. As the labels have been tested to the extreme, you can be confident of a professional quality label that has been designed to last.



Laminated



Temperature Resistant



Water Resistant



Fade Resistant



Abrasion Resistant



Chemical Resistant



Easy Peel

Specialist tape cassettes

In addition to the extensive range of TZe tapes in various colours and sizes, specialist tapes for industrial use have been developed for specific labelling tasks.

Flexible-ID Tape

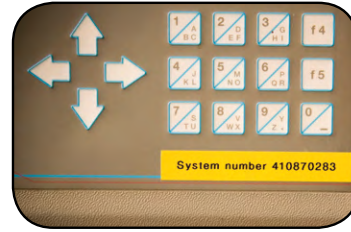
Use on: Curved surfaces or itself



- Wrapping/flagging individual wires
- Sharp bends
- Cylindrical surfaces
- PVC piping and conduits
- Rods and tubes

Strong Adhesive Tape

Use on: Uneven, rough and textured surfaces



- Painted metal
- Powder-coated surfaces
- Utility cabinets
- Patch panels
- Plant and MRO
- Instruments

Technical Specifications

Items included

PTE110 labelling machine
 AC adapter
 TZe221 9mm black on white Flexible-ID sample tape
 User guide
 Carry Case

Hardware

Housing dimensions (mm) 111(w) x 204(h) x 58(d)
 Housing weight 400g
 Tape size TZe tape: 3.5, 6, 9, 12mm
 Print resolution 180 dpi
 Max. print height 9.0 mm
 Max. print speed 20mm / sec
 Cutter type Manual: Cutter blade
 Keyboard type PC layout QWERTY keyboard with dedicated numeric keypad
 LCD display 16 characters x 1 line graphic
 Print preview Yes
 Power 6 x AAA (LR03) alkaline batteries (not supplied)
 AC adapter (supplied)

Built-in software

Built-in fonts 1 font
 Built-in symbols 200
 Character sizes 3 sizes
 Character widths 3 widths: (extended, medium, condensed)
 Font styles 9
 Frames 1
 Underline Yes
 Max. number of lines 2 lines
 Horizontal alignment Automatic length labels: left aligned
 Pre-set length labels: centre aligned
 Pre-set format (auto format) None
 Tape length setting Yes (30-300 mm)
 Tape margin settings Narrow, half, full, chain print
 Tab function Yes
 Specialist labelling functions Cable wrap, cable flag, face place, sequential numbering
 Automatic numbering Yes
 Mirror printing No
 Vertical printing Yes
 Copy (repeat) printing Yes (1-9)
 Print preview Yes (graphic preview)
 Auto power off Yes
 Unit change Yes (inch/mm)
 Language change 20 languages: (English, German, French, Spanish, Portuguese, Italian, Dutch, Danish, Norwegian, Swedish, Finnish, Hungarian, Czech, Polish, Romanian, Slovenian, Slovakian, Croatian, Turkish, Brazilian Portuguese)

Contact:

