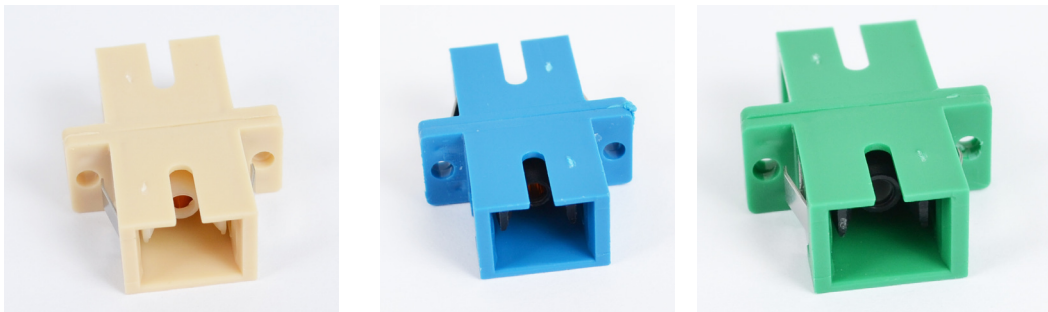


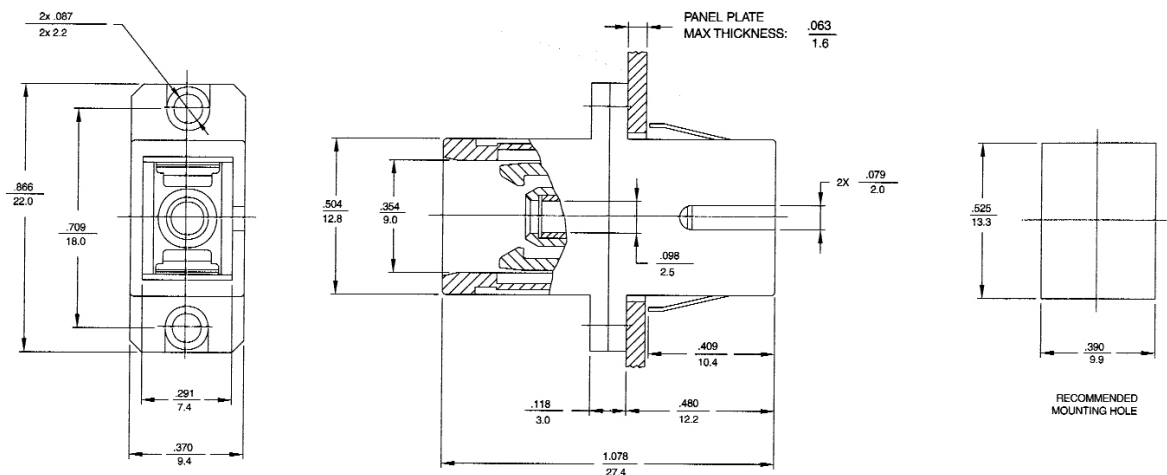
SC MATING SLEEVES

FLANGED

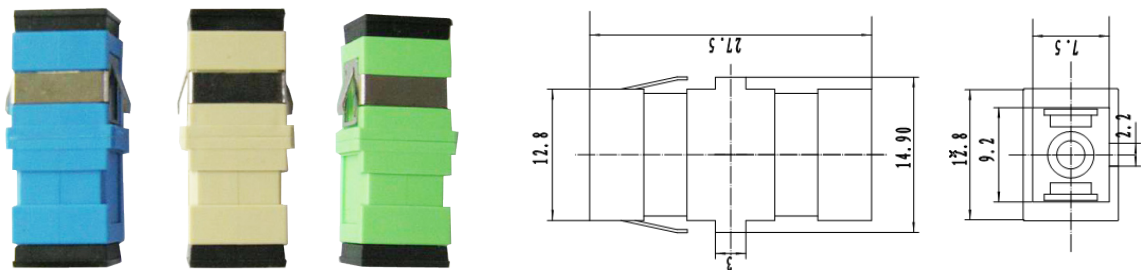


This SC adapters are designed for optimal performance. We offer a bronze sleeve version for PC connectors. The zirconia sleeve versions are designed for high end UPC and APC applications. Applications include CATV, Data Communications and telecommunications networks.

TECH DRAWING



NON-FLANGED



SPECIFICATIONS

Body	ABS Thermoplastic
Housing Color	F1-8300(xx) Beige, F1-8310(xx) Blue, F1-8400(xx) Green
Operating Temperature	-40°C to 85° C
Excess Loss	< or = .1dB: F1-3810(xx), F1-4800(xx) .2dB F1-3800(xx)
F1-3800(xx)	Bronze Sleeve
F1-3810(xx)	Zirconia Sleeve
F1-4800(xx)	APC - Zirconia