

# Pretium® Connector Housings (PCH)

A LANscape® Pretium® Solutions Product

## features and benefits |

<b>Compatible with Plug &amp; Play™ Systems modules</b>	Designed to support Plug & Play Systems applications
<b>Splice in the housing</b>	Saves rack space and the cost of the second housing
<b>Removable top (1U, 2U)</b>	Maximizes ease of access
<b>Transparent front door (04U and 02U)</b>	Permits viewing while protecting installed patch cords
<b>Large removable fiber guides in front</b>	Effectively manage high patch cord densities

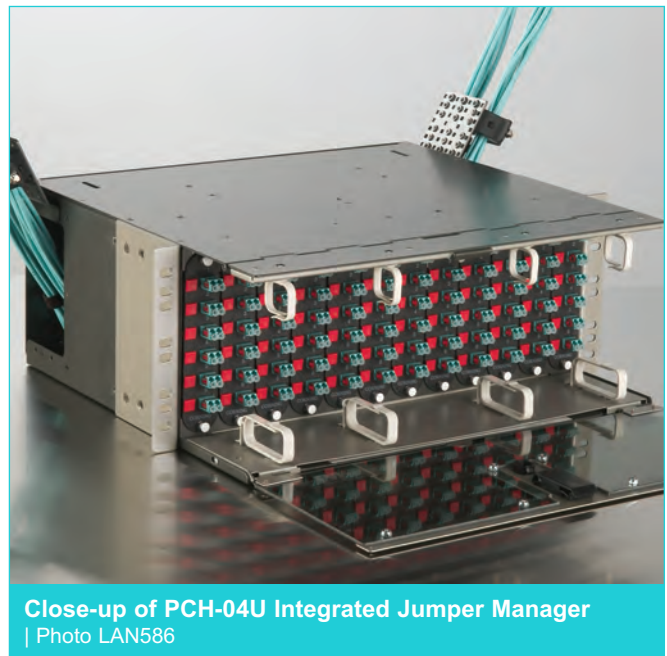
Corning Cable Systems offers a variety of Pretium® Connector Housings designed for the LAN and data center environment. Mountable in 19- or 23-in (optional) equipment racks or cabinets, the housings are four inches deeper than standard connector housings and provide easy, open access to connectors for cleaning, moves and additions or other changes.

The PCH-01U and PCH-02U have a removable latching top that slides forward to provide superior access to interior components after installation. These housings accept two and four Corning Cable Systems CCH connector panels or modules. The panels and modules are available in a wide variety of port counts and connector styles, with blank panels providing a finished look for unused positions. The PCH-04U accepts 12 CCH connector panels or modules and contains an integral hinged horizontal jumper manager on the front of the housing. The manager can be locked in the “up”

*(continued)*



PCH-01U and PCH-04U Housings | Photo LAN585



Close-up of PCH-04U Integrated Jumper Manager | Photo LAN586

# Pretium® Connector Housings (PCH)

A LANscape® Pretium®  
Solutions Product

position for an additional 1U of horizontal jumper management. Left in the default “down” position, it provides additional capacity for jumper routing along the top of the housing for a true Zero-U solution.

The units include the universal cable clamp for cable strain-relief and optional splicing accessories are available. The housings have rugged metal construction and are shipped with everything needed for installation.



PCH-04U with Splice Option | Photo LAN738

## specifications |

	Dimensions (H x W x D) cm (in)	Shipping Weight kg (lb)	Fiber Capacity LC/MT-RJ	Splice
<b>PCH-01U</b>	4 x 43 x 41 (1.75 x 17 x 16)	5 (11)	48	24
<b>PCH-02U</b>	9 x 43 x 42 (3.5 x 17 x 16.5)	5.7 (12.6)	96	96
<b>PCH-04U</b>	18 x 43 x 41 (7 x 17 x 16)	7.5 (16.5)	288	144

# Pretium® Connector Housings (PCH)

A LANscape® Pretium®  
Solutions Product

## ordering information |

Part Number	Description
<b>PCH-01U</b>	Pretium® Connector Housing, 1U tall; accepts up to 2 CCH connector panels or modules; supplied with 1 universal cable clamp (UCC), 2 blank panels and installation hardware
<b>PCH-02U</b>	Pretium Connector Housing, 2U tall; accepts up to 4 CCH connector panels or modules; supplied with 1 UCC, 4 blank panels and installation hardware
<b>PCH-04U</b>	Pretium Connector Housing, 4U tall; accepts up to 12 CCH connector panels or modules; supplied with 1 UCC, 12 blank panels and installation hardware
<b>Accessories</b>	
<b>PC1-SPLC-04R</b>	Splice Tray Bracket for PCH-01U; accepts up to (4) 0.2 in Type 2R or (2) 0.4 in Type 4R reduced-length splice trays; includes slack storage spools
<b>PC2-SPLC-6SR</b>	Splice Tray Bracket for PCH-02U; accepts up to (6) 0.2 in Type 2S, Type 2S long or Type 2R splice trays; or accepts up to (3) 0.4 in Type 4S or Type 4R splice trays
<b>PC4-SPLC-12SR</b>	Splice Tray Bracket for PCH-04U; accepts up to (12) 0.2 in Type 2S or (7) 0.4 in Type 4S standard length splice trays; or accepts up to (12) 0.2 in Type 2R or (7) 0.4 in Type 4R splice trays; works with cable entry from the left-hand side only
<b>PC1-STRN</b>	PCH-01U Strain-Relief Bracket; accepts up to 2 UCC kits (UCC-001)
<b>PC2-STRN</b>	PCH-02U Strain-Relief Bracket; accepts up to 2 UCC kits (UCC-001)
<b>PC4-STRN</b>	PCH-04U Strain-Relief Bracket; accepts up to 2 UCC kits (UCC-001)
<b>UCC-001</b>	Universal Cable Clamp Strain-Relief Kit for use with PC1-STRN or PC4-STRN
<b>HDWR-LOCK-KIT</b>	Door Lock Kit; can be installed on the front and/or back door(s) of the PCH-04U; comes with 1 lock and 2 keys
<b>PC4-SLK</b>	Rear Slack Storage Bracket for PCH-04U; installed in the rear of the housing for additional slack storage; 1 supplied with PCH-04U

Note: Splice trays and jumper management panels (CJPs) ordered separately.

# Pretium® Connector Housings (PCH)

A LANscape® Pretium®  
Solutions Product

## ordering information | (continued)

Part Number	Description
<b>Accessories</b> (continued)	
<b>PC1-LOCK-KIT</b>	Door Lock Kit; can be installed on the front and/or back door(s) of the PCH-01U; comes with 1 lock and 2 keys
<b>PC1-BKT-FLSH</b>	PCH-01U Flush Mount Brackets (1 set)
<b>PC1-BKT-23</b>	PCH-01U Mounting Brackets for 23 in frames/cabinets (1 set)
<b>PC2-BKT-FLSH</b>	PCH-02U Flush Mount Brackets (1 set)
<b>PC2-BKT-23</b>	PCH-02U Mounting Brackets for 23 in frames/cabinets (1 set)
<b>PC4-BKT-FLSH</b>	PCH-04U Flush Mount Brackets (1 set)
<b>PC4-BKT-23</b>	PCH-04U Mounting Brackets for 23 in frames/cabinets (1 set)
<b>CJP-01U-P</b>	Pretium® 1U Jumper Management Panel; provides jumper management in a 1.75-in rack space
<b>CJP-02U-P</b>	Pretium 2U Jumper Management Panel; provides jumper management in a 3.5-in rack space
<b>PC4-SLK-D24</b>	Accessory Unit attached to the rear of the PCH-04U providing fiber cable storage in 24 circular cassettes
<b>PC4-SIDE-PLT</b>	Front Metal Plates and Grommets to enclose the front of the PCH-04U; includes 5 sets of plates (right and left)

Corning Cable Systems LLC • PO Box 489 • Hickory, NC 28603-0489 USA  
800-743-2675 • FAX: 828-325-5060 • International: +1-828-901-5000 • [www.corning.com/cablesystems](http://www.corning.com/cablesystems)

Corning Cable Systems reserves the right to improve, enhance and modify the features and specifications of Corning Cable Systems products without prior notification. LANscape and Pretium are registered trademarks of Corning Cable Systems Brands, Inc. Plug & Play is a trademark of Corning Cable Systems Brands, Inc. All other trademarks are the properties of their respective owners. Corning Cable Systems is ISO 9001 certified. © 2003, 2010 Corning Cable Systems. All rights reserved. Published in the USA. LAN-538-EN / September 2010