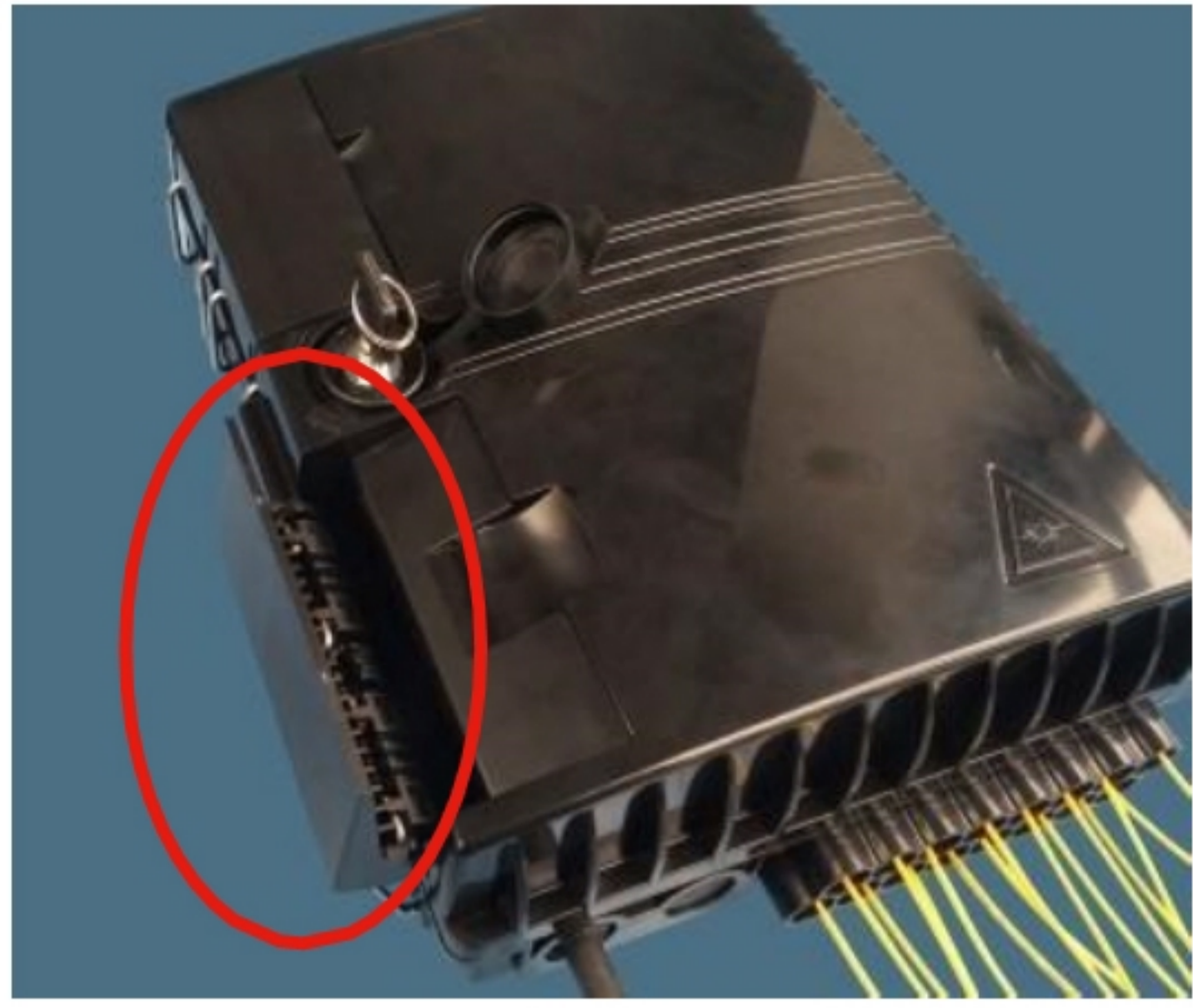


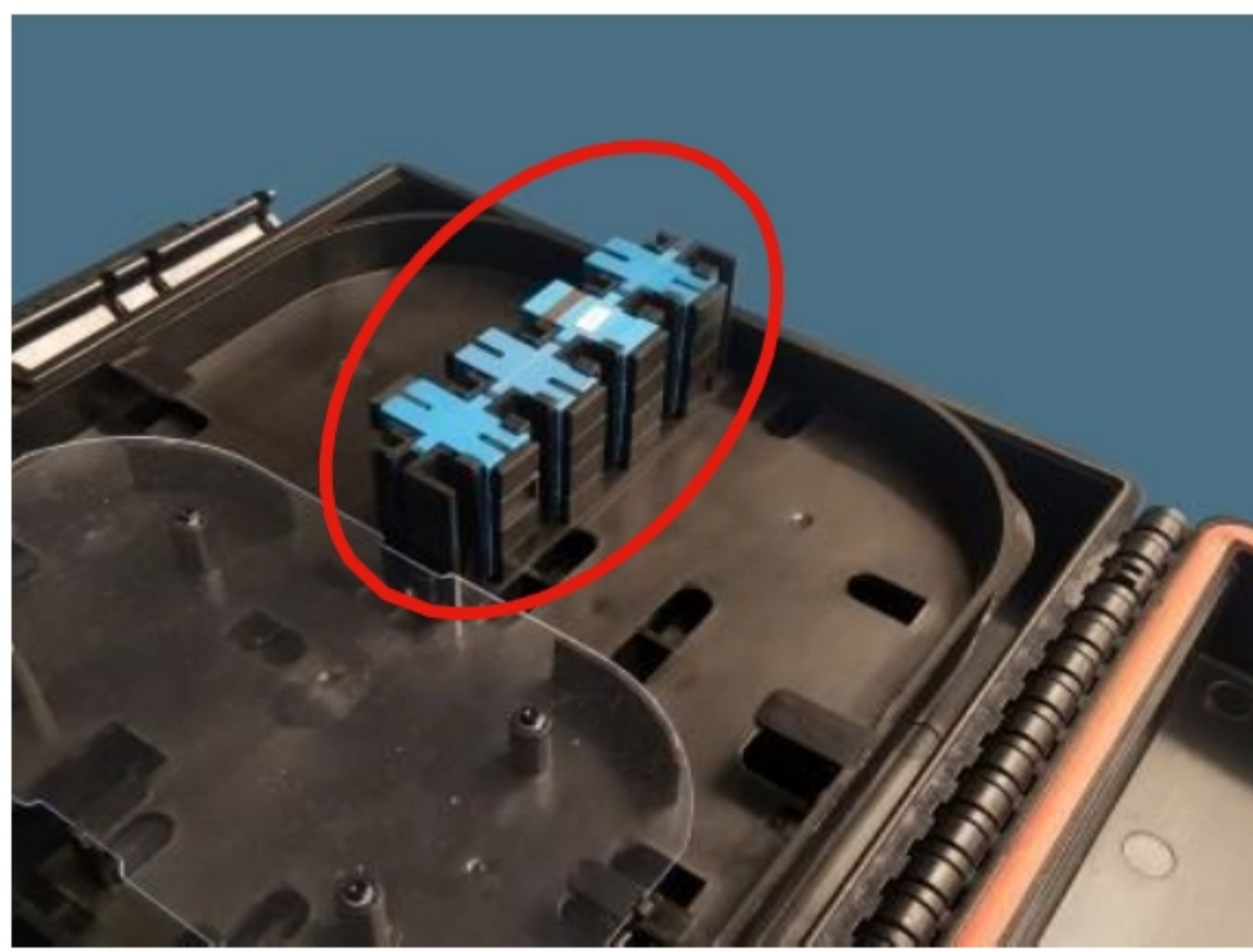
Installation procedure

1、 Open the two elastic fasteners of the box, use the key to open the box.

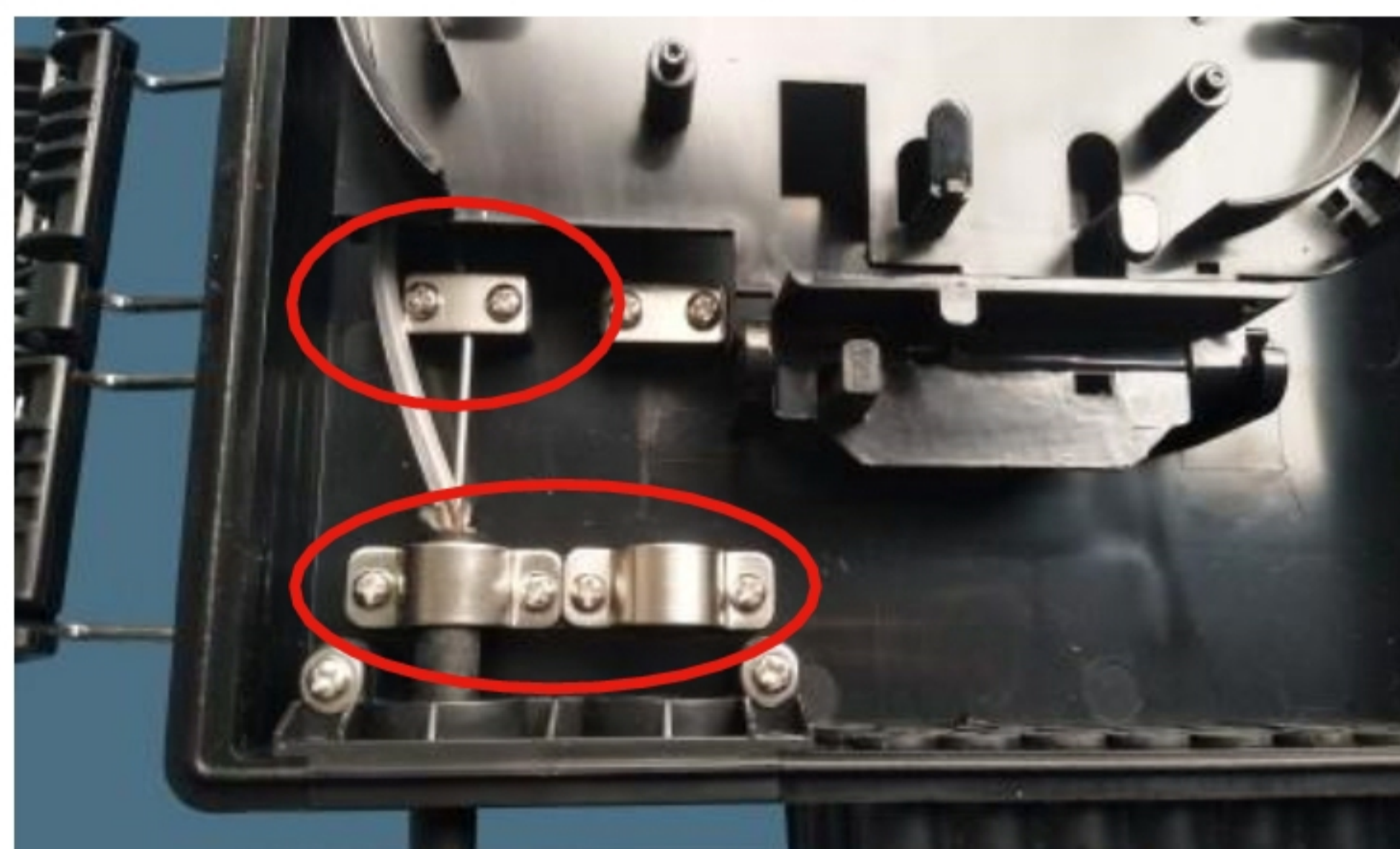


2a、 Steel pipe type PLC: Install the adaptors on the rack.

2b、 Box type PLC: Insert the box type splitter and fix it with the pull lock.

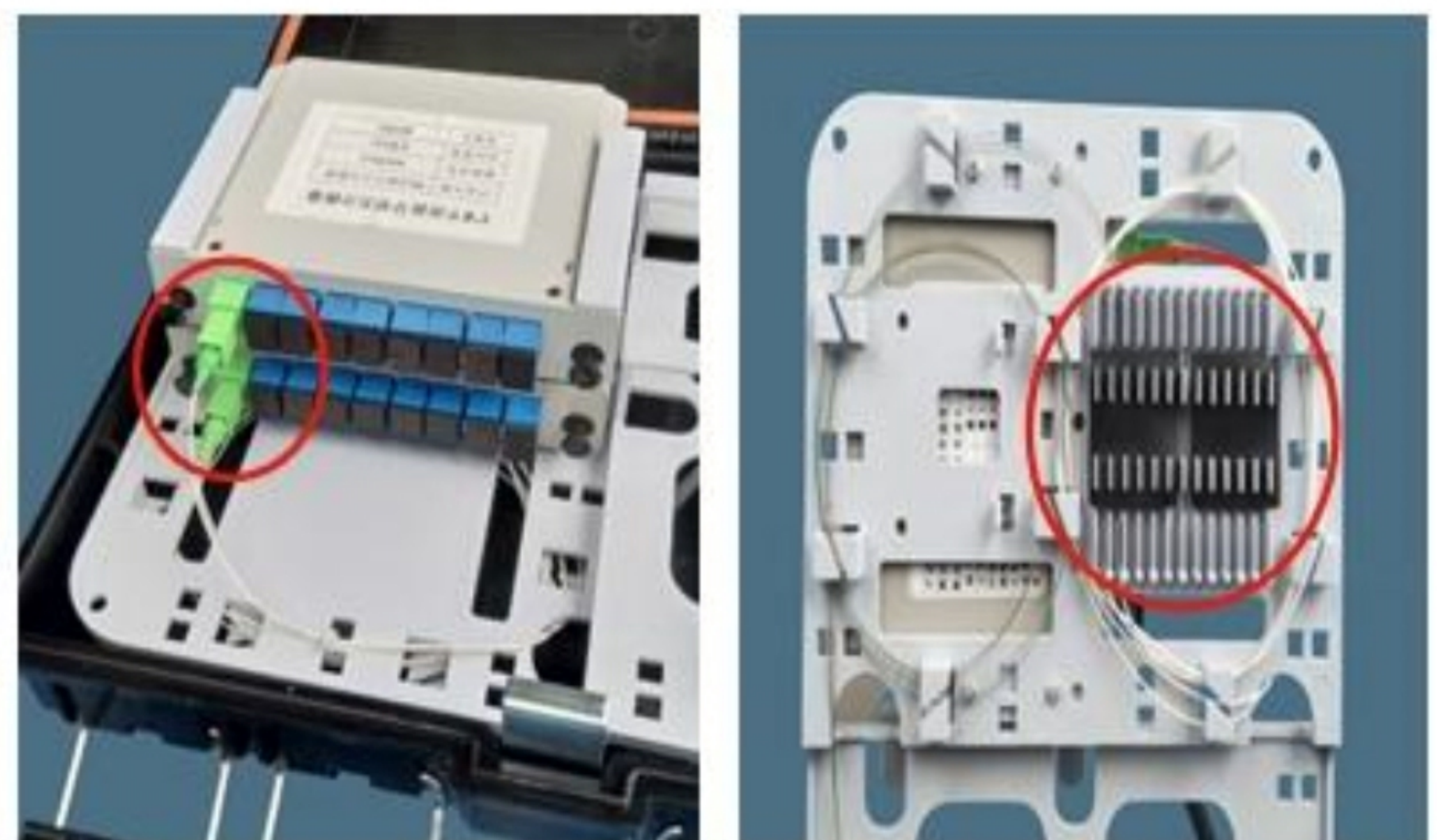
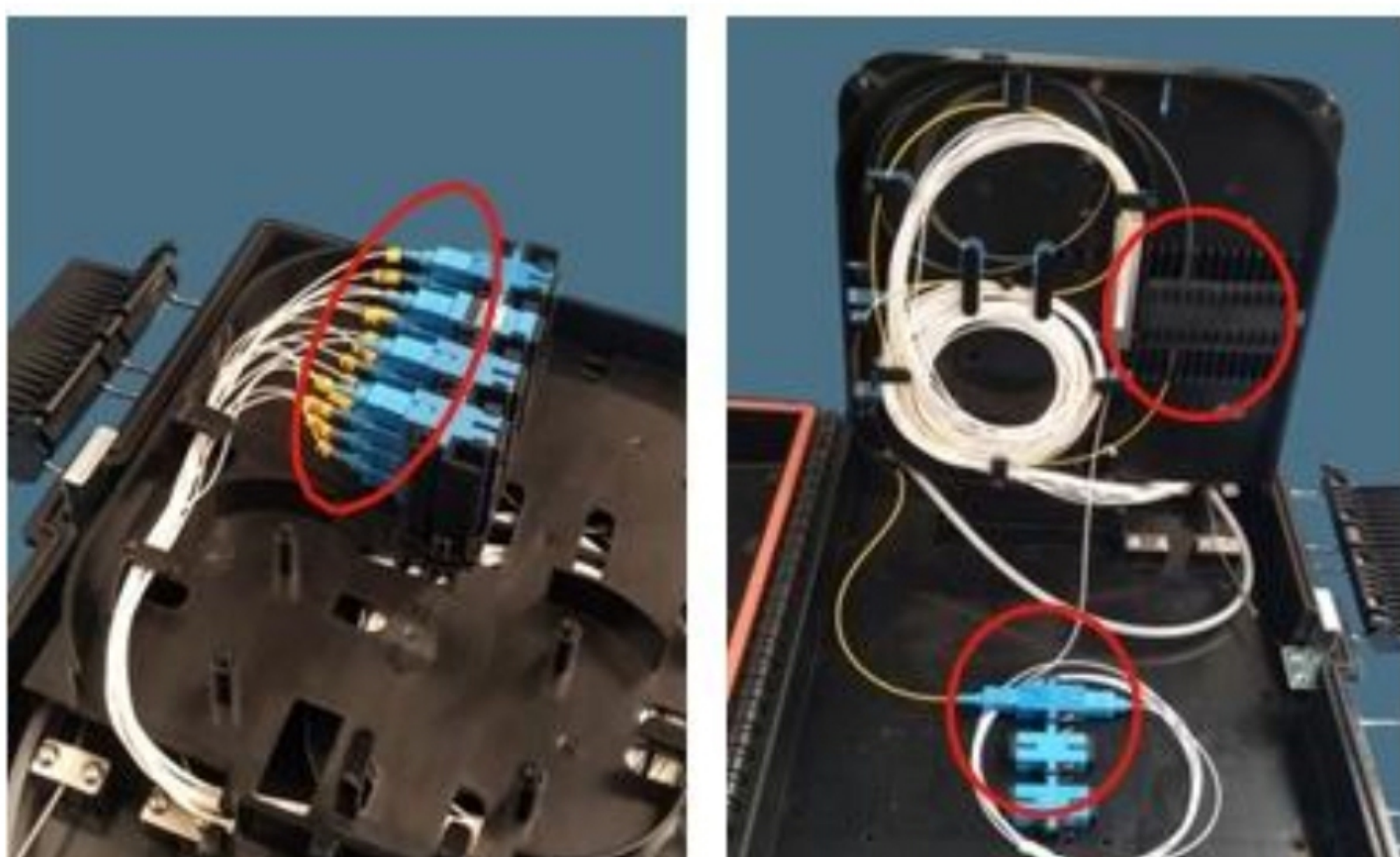


3、 Strip the cable, remove the outer and inner sheath, loose tube, clean and remove oil filling paste in the cable, leave 1~1.6m of bare fiber length and 30-50mm steel core; after cable is introduced into the box, fix it by pressing the cable clam (according to the cable size, choose whether or not to use cable pad), and tighten it with re-enforced core; put on the bare fiber protection tub, lead the fiber into the back of the flip board and coil it, lay the fiber end in the splice slot.

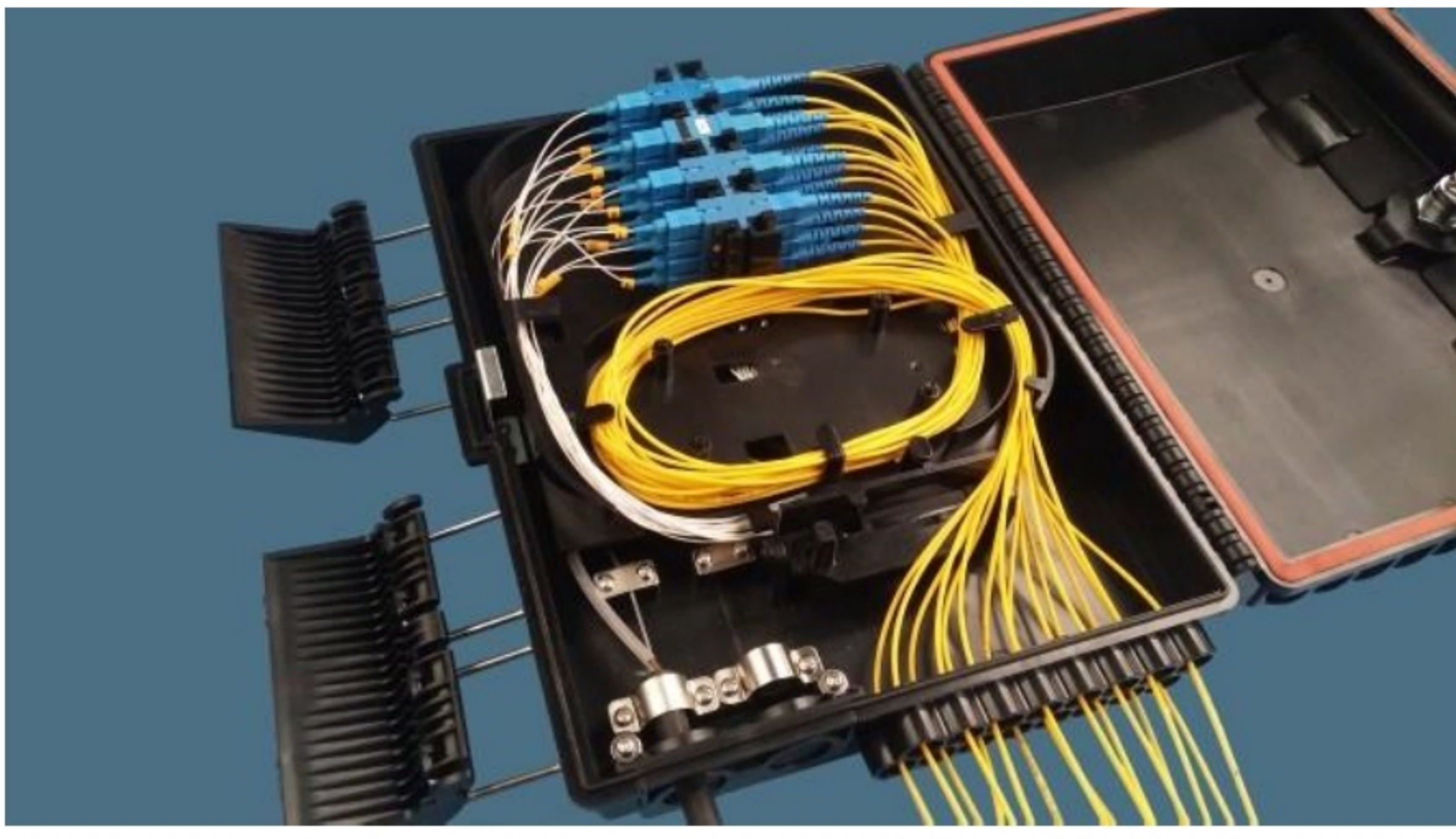


4a、 Steel pipe type PLC: Snap the PLC into the slot on the back of the flip board, after coil the outgoing fibers and then insert the fiber ends into the adaptors on the front of the flip board; meantime, coil the incoming fiber and insert the fiber end into the adaptor at the bottom, the other side of the adaptor is connected to the pigtail; lead the pigtail into the splicing slot on the back of the flip board, and splice it with the incoming cable, and then clip on rubber pad to prevent the joint from falling off.

4b、 Box type PLC: Insert the pigtail into the inlet of the PLC, lead the other end of the pigtail into the splicing slot on the back of the flip board, and splice it with the incoming cable, and then clip on the rubber pad to prevent the joint from falling off.



5、 Insert the outgoing pigtail ends into the adaptors, after coiled and bound in the parking area on the front of the flip board, pass them through the sealing plug at the outlet to lead out the cables.



6、 Fix the case with expansion screw, or hold on the pole with hose clamp, and the installation is completed.

