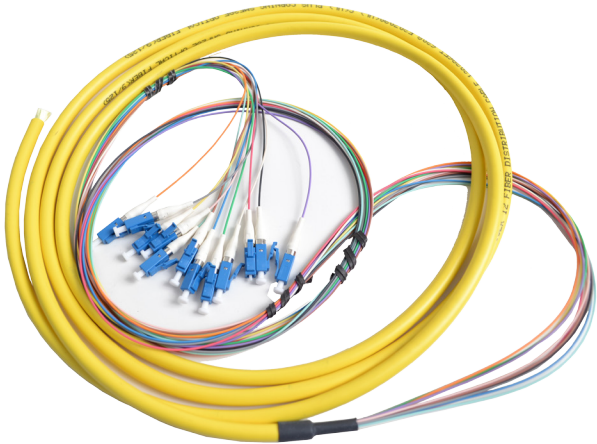


# COLOR-CODED DISTRIBUTION STYLE PIGTAIL PACKS



## FEATURES

- 900µm Tight Buffer Pigtails, 3 Meter Length
- Color Coded to Industry Standards
- 6 or 12 Fiber
- Connectors Available: SC, LC, ST, FC
- Fiber Available: SM and MM OM2, OM3, OM4

This Distribution Style Pigtails Packs feature a durable outer jacket ensuring strength and protection during installations. The distribution fiber fans out into 900µm color coded tight buffered fibers and are color coded to TIA-598-A industry standards. These pigtails are available in Singlemode or Multimode, 6 or 12 fiber packs, and your choice of stock connectors (SC, LC, ST, FC). All pigtails feature low insertion loss, low back reflection and are made with Corning® fiber. Standard length of 3 meters: 1 meter 900µm 'fan out' and 2 meter distribution 'tail'.

6 Fiber Buffer Colors - Blue, Orange, Green, Brown, Slate, White

12 Fiber Buffer Colors - Blue, Orange, Green, Brown, Slate, White, Red, Black, Yellow, Violet, Rose, Aqua

## SPECIFICATIONS

Singlemode	UPC Pigtails	APC Pigtails
Pigtail Lengths	3 meters	3 meters
Lengths Tolerance	+3/-0 inch	+3/-0 inch
Fiber Type	Corning® SMF28 Ultra	
Buffer Style	900µm Tight Buffer	900µm Tight Buffer
Buffer Material	PVC	PVC
Insertion Loss	0.3dB (max)	0.3dB (max)
Back Reflection	-55dB	-65dB
Operating Temperature	-20 to +70 degrees Celsius	
Storage Temperature	-40 to +70 degrees Celsius	

Multimode	PC Pigtails
Patchcord Lengths	3 meters
Lengths Tolerance	+3/-0 inch
Buffer Style	900µm Tight Buffer
Buffer Material	PVC
Insertion Loss	0.4dB (max)
Back Reflection	-25dB
Operating Temperature	-20 to +70 degrees Celsius
Fiber Type	Corning® ClearCurve® OM2, OM3, OM4

## ORDERING INFORMATION

DSP-6SCUPC-BU	Distribution Style SC/UPC Singlemode 900µm (6 pack) with blue boots
DSP-12SCUPC-BU	Distribution Style SC/UPC Singlemode 900µm(12 pack) with blue boots
DSP-6SCAPC-GR	Distribution Style SC/APC Singlemode 900µm (6 pack) with green boots
DSP-12SCAPC-GR	Distribution Style SC/APC Singlemode 900µm (12 pack) with green boots
DSP-6SCMM-BG	Distribution Style SC/PC 62.5µm 900µm (6 pack) with beige boots
DSP-12SCMM-BG	Distribution Style SC/PC 62.5µm 900µm (12 pack) with beige boots
DSP-6SCMM50-BLK	Distribution Style SC/PC 50µm 900µm (6 pack) with black boots
DSP-12SCMM50-BLK	Distribution Style SC/PC 50µm 900µm (12 pack) with black boots
DSP-6SCMM50G-AQ	Distribution Style SC/PC 50µm OM3 900µm (6 pack) with aqua boots
DSP-12SCMM50G-BG	Distribution Style SC/PC 50µm OM3 900µm (12 pack) with beige boots
DSP-6LCUPC-BU	Distribution Style LC/UPC Singlemode 900µm (6 pack) with blue boots
DSP-12LCUPC-BU	Distribution Style LC/UPC Singlemode 900µm (12 pack) with blue boots
DSP-6LCMM-BG	Distribution Style LC/PC 62.5µm, 900µm (6 pack) with beige boots
DSP-6LCMM50-BLK	Distribution Style LC/PC 50µm, 900µm (6 pack) with black boots
DSP-6LCMM50G-AQ	Distribution Style LC/PC 50µm OM3 10G, 900µm (6 pack) with aqua boots
DSP-12LCMM-BG	Distribution Style LC/PC 62.5µm, 900µm (12 pack) with beige boots
DSP-12LCMM50-BLK	Distribution Style LC/PC 50µm, 900µm (12 pack) with black boots
DSP-12LCMM50G-AQ	Distribution Style LC/PC 50µm OM3 10G, 900µm (12 pack) with aqua boots
DSP-6STMM-BG	Distribution Style ST/PC 62.5µm 900µm (6 pack) with beige boots
DSP-6STMM50-BLK	Distribution Style ST/PC 50µm, 900µm (6 pack) with black boots
DSP-12STMM-BG	Distribution Style ST/PC 62.5µm, 900µm (12 pack) with beige boots
DSP-12STMM50-BLK	Distribution Style ST/PC 50µm, 900µm (12 pack) with black boots
DSP-6STUPC-BU	Distribution Style ST/UPC Singlemode 900µm (6 pack) with blue boots
DSP-12STUPC-BU	Distribution Style ST/UPC Singlemode 900µm (12 pack) with blue boots