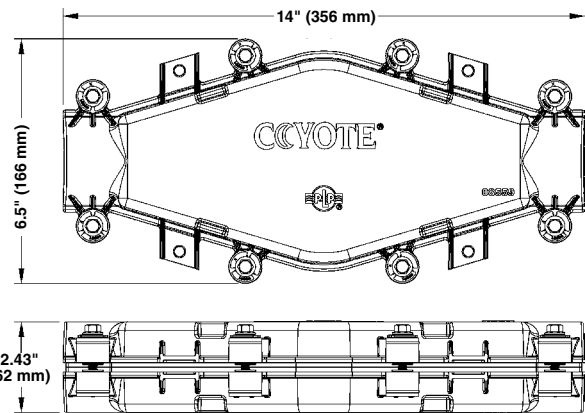
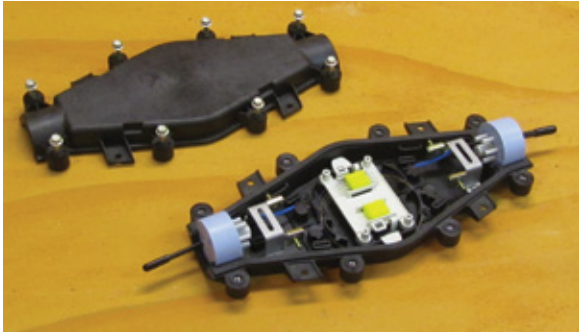


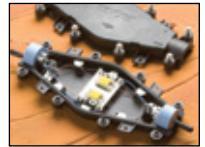
COYOTE® LCC (Low Count Closure)



The COYOTE LCC's compact size, use of the versatile grommet system and internal LITE-GRIP® Splice Platform are designed to make this rugged closure the economical choice for new installations and critical repair situations.

Key Features

- **Size:** 14" L x 6.5" W x 2.4" D
- **Max. Splice Capacity:** (24) Single fusion, (72) Ribbon/ Mass Fusion
- **Configuration:** In-Line or Butt Splice
- **Port Quantity:** 2 (1 each end)
- **Application:** Direct buried, below grade, pole/wall mount or aerial
- A cost effective solution for quick restoration of damaged/ cut fiber service drops
- Tested in accordance to TR-NWT-000251 by an independent outside lab
- Available in flame retardant material
- Factory installed gasket allows re-entry and re-use
- Flexible grommet sealing technology supports a wide range of flat or round cable profiles
- Quick to assemble, no special tools required
- Flat shape allows for mounting in small areas
- Utilizes the LITE-GRIP® Splice Block System which permits single fusion, mass fusion, mechanical, PLC splitters or a combination of all within one closure



COYOTE LCC for Single Fusion Splices



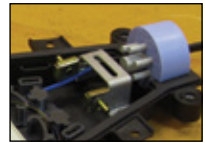
Stacked Splice Platform



Cable Retention with Bobbin



Fiber Routing Clips



Dual Strength Member Brackets



Aerial Mount LCC



Pole/Wall Mount Bracket

Catalog No.	COYOTE LCC For Fiber Closures*
COYLCC-F001	For Single Fusion. Includes: (1) 7-Hole Grommet: Cat. #8003676 and (1) 12-Hole Grommet: Cat. #8003796
COYLCC-F002	For Single Fusion. Includes: (1) Bobbin Kit, (1) 7-Hole Grommet: Cat. #8003676, (1) 12-Hole Grommet: Cat. #8003796
COYLCC-F003	For Ribbon. Includes: (2) 2-Hole Grommets: Cat. #8003663
COYLCC-F004	For Single Fusion. Includes: (2) 7-Hole Grommets: Cat. #8003676
COYLCC-F005	For Single Fusion. Includes: (2) 2-Hole Grommets: Cat. #8003663
COYLCC-F006	For Single Fusion. Includes: (2) 4-Hole Grommets: Cat. #8003664
COYLCC-F007	For Single Fusion. Includes: (1) 7-Hole Grommet: Cat. #8003676 and (1) 8-Hole Grommet: Cat. #8003677
COYLCC-F008	For Single Fusion. Includes: (1) 1-Hole Grommet: Cat. #8003691 and (1) 8-Hole Grommet: Cat. #8003677
COYLCC-F009	For Single Fusion. Includes: (2) 12-Hole Grommets: Cat. #8003796
COYLCC-F010	For Single Fusion. Includes: (1) Bobbin Kit, (1) 1-Hole Grommet: Cat. #8003691 and (1) 12-Hole Grommet: Cat. #8003796

All Fiber Kits Include: (2) Grommets, (3) LITE-GRIP® Splice Blocks, (1) Splice Platform, (1) Dual Strength Member Bracket, (1) L Bracket, Fiber Management Clips and Misc. Hardware

*For the COYOTE LCC Flame Retardant catalog numbers, insert "FR" into the catalog number code. Ex.: COYLCCFR-F001

Catalog No.	COYOTE LCC for Copper Closures
COYLCC-C001	For Copper. Includes: (2) 1-Hole Grommets: Cat. #8003691
COYLCC-C002	For Copper. Includes: (2) 1-Hole Grommets: Cat. #8003692
COYLCC-C003	For Copper. Includes: (2) 1-Hole Grommets: Cat. #8003693
COYLCC-C004	For Copper. Includes: (1) 1-Hole Grommet: Cat. #8003691 and (1) 2-Hole Grommet: Cat. #8003663
COYLCC-C005	For Copper. Includes: (2) 4-Hole Grommets: Cat. #8003664

All Copper Kits Include: (2) Grommets, (2) MINI-MORAY™ Shield Connectors and (1) Bonding Strap

Catalog No.	COYOTE LCC Accessories
80808633	Strength Member Bobbin Kit
80809851	Dual Strength Member Bracket Kit
8003843	Strength Member L Bracket Kit
COYDACSPA03	Splice Platform Kit for Single Fusion - includes 3 splice blocks
COYDACSPA04	Splice Platform Kit for Ribbon - includes 3 splice blocks
Mounting Hardware	See Mounting Bracket Chart on page 28

LCC

- Re-Enterable
- Re-Usable
- Hermetically Sealed
- Free- Breathing
- Aerial
- Pole/Wall Mount
- Below Grade
- Direct Buried
- Flame Retardant

Small Fiber Count Closure

Maximum Splice and Express Capacities for COYOTE® Fiber Optic Closures

Maximum Splice Capacity		COYOTE® Fiber Optic Closures	Maximum Express Capacity	
Buffer Tube/Single Fusion	Unitube Ribbon/ Mass Fusion		Buffer Tubes	Ribbons
16 PN: COYDTC-001 PN: COYDTC-002 Splice Blocks Included	36 PN: COYDTC-001 PN: COYDTC-002 Splice Blocks Included	 COYOTE DTC	24 Bare Fibers PN: COYDTC-001 PN: COYDTC-002	2 Ribbons PN: COYDTC-001 PN: COYDTC-002
24 PN: ALL COYLCC Kits	72 PN: COYLCC-003	 COYOTE LCC	48 Bare Fibers PN: ALL COYLCC Kits	8 Ribbons PN: COYLCC-003
96 PN: 8006951 (with 80809958 Tray)	288 PN: 8006951 (with LGSTR144 Tray)	 COYOTE In-Line RUNT	8 Buffer Tubes PN: 8006951	18 Ribbons PN: 8006951
120 PN: COY1-001 (with 80809958 Tray)	288 PN: COY1-002 (with LGSTR144 Tray)	 COYOTE ONE Dome	12 Buffer Tubes PN: COY1-001	24 Ribbons PN: COY1-002
144 PN: 8006944 (with 80809958 Tray)	432 PN: 8006945 (with LGSTR144 Tray)	 COYOTE Dome 6.5" x 17"	16 Buffer Tubes PN: 8006944	24 Ribbons PN: 8006945
240 PN: 8006877 (with LGSTS72 Tray)	648 PN: 8006878 (with LGSTR216 Tray)	 COYOTE Dome 6.5" x 22"	24 Buffer Tubes PN: 8006877	36 Ribbons PN: 8006878
288 COYD919B-000 (with 80809958 Tray)	720 COYD919R-000 (with LGSTR144 Tray)	 COYOTE Dome 9.5" x 19"	36 Buffer Tubes PN: 800013691	24 Ribbons PN: 800013692
800 PN: 80061057 (with LGSTS72 Tray)	1728 PN: 80061056 (with LGSTR216 Tray)	 COYOTE Dome 9.5" x 28"	60 Buffer Tubes PN: 80061055	36 Ribbons PN: 80061056

Splice Trays are not included.

COYOTE® Mounting Brackets

Closure Hardware Options (Refer to images on page 31)					
Product	Description	Aerial Strand Mount	Aerial ADSS Mount	Pole/Wall Mount	Underground Mount
	COYOTE® LCC (Low Count Closure)	PN: 8003832 Image 1	PN: 8003852 Image 2	PN: 8003830 Image 3	PN: 8003835 Image 20
	COYOTE In-Line RUNT	PN:8003797 Image 4	PN: 8003864 Image 5	PN: 8003703 Image 6	PN: 8003835 Image 20 or PN: 8003706 Image 21
	COYOTE Terminal (Single Chamber)	PN:8003797 Image 4	PN: 8003864 Image 5	PN: 8003703 Image 6	PN: 8003835 Image 20 or PN: 8003706 Image 21
	COYOTE Terminal (Dual Chamber)	PN:8003815 Image 7 or PN:8003705 Image 8	N/A	PN: 8003703 Image 6	PN: 8003706 Image 21
	COYOTE ONE Dome	EVOBKT-ALC PN: 8004005 Image 9 or PN:8004027 Image 10 EVOBKT-AE	PN: 8004031 Image 11 or PN: 8004032 Image 12	PN: EVOBKT-PWM Image 13	PN: 8003835 Image 20
	COYOTE Dome and Terminal Dome 6.5" x 17"	PN: 8004035 Image 14	PN: 8004036 Image 15	PN: 8003702 Image 16	PN: 8003835 Image 20 or PN: 8003707 Image 22
	COYOTE Dome and Terminal Dome 6.5" x 22"	PN: 8004035 Image 14	PN: 8004036 Image 15	PN: 8003702 Image 16	PN: 8003835 Image 20 or PN: 8003707 Image 22
	COYOTE Dome and Terminal Dome 9.5" x 19"	PN: 8004037 Image 17	PN: 8004038 Image 18	PN: 8003942 Image 19	PN: 8003835 Image 20
	COYOTE Dome and Terminal Dome 9.5" x 28"	PN: 8004037 Image 17	PN: 8004038 Image 18	PN: 8003942 Image 19	PN: 8004003 Image 23

COYOTE® Mounting Brackets

Bracket Options					
Image No.	Photo	Image No.	Photo	Image No.	Photo
1 Strand Mount 8003832		9 Strand Mount Low Clearance 8004005 EVOBKT-ALC		17 Strand Mount Offset Adjustable 8004037	
2 ADSS Mount 8003852		10 Strand Mount Offset Adjustable 8004027 EVOBKT-AE		18 ADSS Mount Offset Adjustable 8004038	
3 Pole/Wall Mount 8003830		11 ADSS Mount Low Clearance 8004031		19 Pole/Wall Mount 8003942	
4 Strand Mount 8003797		12 ADSS Mount Offset Adjustable 8004032		20 Handhole Mount 8003835	
5 ADSS Mount 8003864		13 Pole/Wall Mount 8004004 EVOBKT-PWM		21 Swing Arm 8003706	
6 Pole/Wall Mount 8003703		14 Strand Mount Offset Adjustable 8004035		22 Swing Arm 8003707	
7 Strand Mount Low Clearance 8003815		15 ADSS Mount Offset Adjustable 8004036		23 Manhole Support for all Domes 8004003	
8 Strand Mount Offset Adjustable 8003705		16 Pole/Wall Mount 8003702			