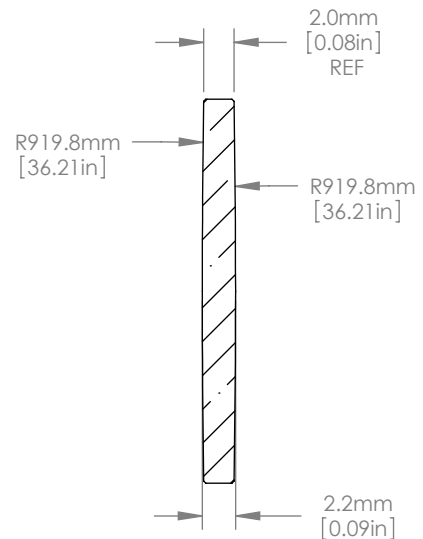
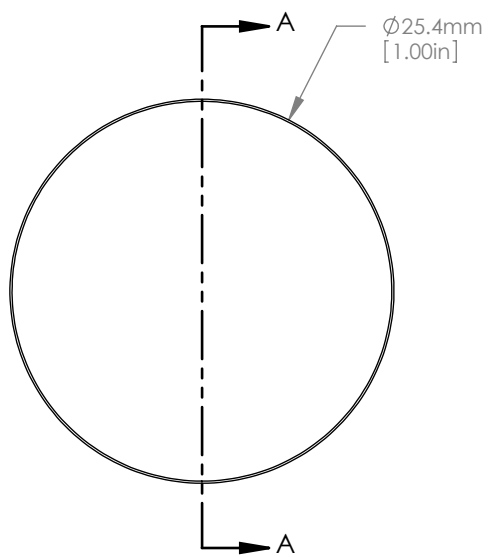




SCALE 1:1



- NOTES/SPECIFICATIONS:
- DESIGN WAVELENGTH: 588nm
  - FOCAL LENGTH:  $f=1000.0\text{mm} \pm 1\%$
  - BACK FOCAL LENGTH(REF):  $bf=999.3\text{mm}$
  - CLEAR APERTURE:  $>90\%$
  - SURFACE QUALITY: 40-20 SCRATCH-DIG
  - CENTRATION:  $\leq 3\text{arcmin}$
  - DIAMETER TOLERANCE:  $+0.0/-0.1\text{mm}$
  - THICKNESS TOLERANCE:  $\pm 0.1\text{mm}$

FOR INFORMATION ONLY  
NOT FOR MANUFACTURING PURPOSES

DRAWING PROJECTION			Product Drawing	
NAME	DATE	D=25.4mm F=1000.0mm UVFS BI CONVEX LENS		
DRAWN GG	15/NOV/10	MATERIAL	UV GRADE FUSED SILICA	REV C
APPROVAL JC	13/DEC/10	ITEM #	T-LB4374	APPROX WEIGHT 0.03 kg
VALUES IN PARENTHESIS ARE CALCULATED AND MAY CONTAIN ROUND OFF ERRORS				