

FiberLert™ Live Fiber Detector

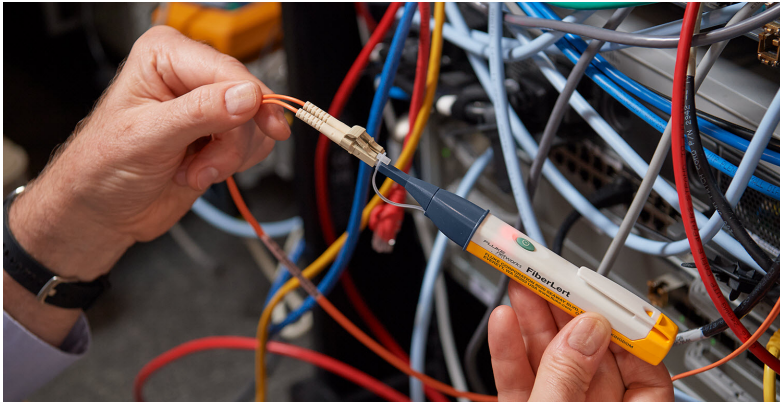
The easy, pocket-sized fiber troubleshooter

Quickly verify fiber activity, polarity, and connectivity with the FiberLert™ Live Fiber Detector. This pocket-sized tool tests single-mode, multimode, UPC and APC patch cords and ports with a non-contact / non-contaminating detector. The LightBeat™ feature flashes the LED, indicating a powered-on condition and good battery, a timer shuts FiberLert™ off after five minutes of inactivity to extend battery life (2xAAA, included). Rugged design includes a convenient pocket clip and is backed by a two-year warranty.

- Detects optical power in single-mode and multimode fiber wavelengths (near infrared range 850 nm to 1625 nm)
- No setup or interpretation needed – light and sound indicate presence of an optical signal
- “Non contact” detector reduces the risk of contamination and damage
- Suitable for ports and patch cords, SM, MM, UPC and APC connections
- LightBeat™ flashes to indicate operation and battery status; powers off after five minutes of inactivity to preserve battery life (2xAAA, included)
- Two-year warranty



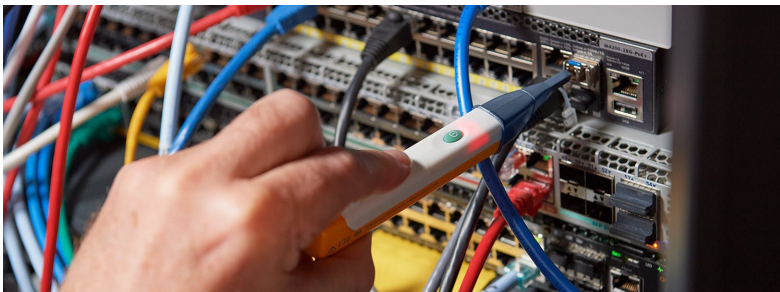
Applications



Check polarity and operation of patch cords.



Determine if a port is live. Small size makes it easy to access cramped patch panels.



Determine if a transceiver is operational. FiberLert can detect fiber signals without making contact.

Specifications

Feature	Description
OPERATING PRINCIPLE	Senses near infrared light emitted from fiber optic cabling. A continuous red glow at the handle and an audible beeping noise (if not switched off) indicates the presence of near infrared light.
OPTICAL INTERFACE	Non-contact ceramic ferrule. Fits directly with 1.25 mm LC receptacles. Tethered ferrule adapter for testing 1.25 mm ferrule patch cord. Supports single-mode, multimode, UPC and APC connectors and ports.
WAVELENGTH DETECTION	850 nm to 1625 nm
OPTICAL POWER DETECTION RANGE	+3 dBm to -30 dBm
LIGHT DETECTION	Visible steady red LED indicator when optical power is detected
LIGHTBEAT™ INDICATOR	Flashes twice every two seconds when unit is on and battery strength is sufficient.
BATTERY SAVER	Unit automatically turns off after five minutes of inactivity
BATTERIES	2 AAA alkaline batteries included
BATTERY LIFE	Typically, greater than 1 year (5 hrs. of use a week)
ITEM SIZE	0.6" x 1.0" x 6.6" / 1.6 x 2.5 x 16.8 cm
ITEM WEIGHT	2.1 oz / 59 g
OPERATING TEMPERATURE RANGE	-10 °C to 50 °C
OPERATING HUMIDITY RANGES	95 % (10 °C to 35 °C) Non-condensing 75 % (35 °C to 40 °C) Non-condensing uncontrolled < 10 °C
OPERATING ALTITUDE	≤ 3000 meters
STORAGE TEMPERATURE	-20 °C to 50 °C

Ordering Information

Model	Description
Fluke FiberLert™-125	FIBERLERT, 850 NM TO 1625 NM LIGHT DETECTOR