

# firewood9

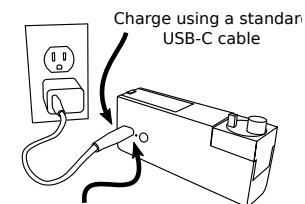
## IMPORTANT SAFETY INSTRUCTIONS

MISUSE CAN CAUSE INJURY AND PROPERTY DAMAGE! Read instructions before use and only use according to instructions.

- Never use a battery that has been damaged.
- Charge using standard USB-C (5V) only.
- Only use with high drain 18650 cell capable of 20A min discharge current.
- Remove battery when traveling by air or mailing.
- Do not use near water or if wet.
- The oven, capsule, and plug can get **HOT** while in use. Please use caution and allow a few minutes for cooling before handling.

### Charge Battery:

Charge using internal USB charger only. Do not transport loose cells.



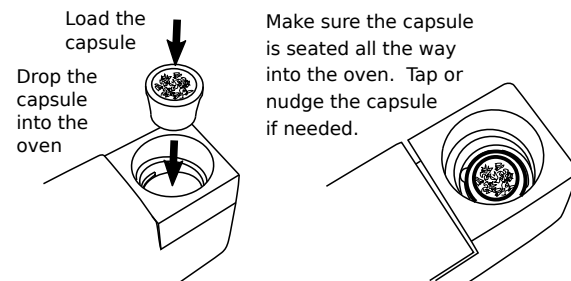
### Changing Battery:

Only use High drain 18650 cells rated for at least 20A discharge current. Insert positive end first.

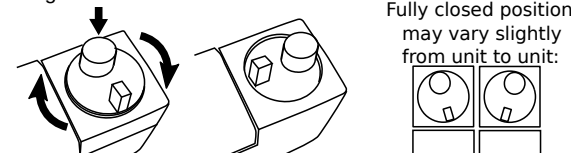
Green light turns on when charging and off when charge is complete

### Load Contents:

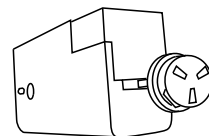
Pack contents down into capsule using the packing tool on the oven plug. Pack tight enough that you can hold the capsule upside down without spilling the contents.



Insert oven plug as shown. Push down and rotate clockwise to tighten.



If capsule gets stuck in oven, push the rectangular tool on the oven plug into the gap on the front of the device as shown:



### Button Summary (details follow):

#### Click:

- 1x Quick
- Hold
- 1x Quick & Hold
- 2x Quick & Hold
- 3x Quick & Hold
- 2x Quick
- 3x Quick
- 4x Quick

#### Function:

- Check battery level
- Turn heater on
- Change to preset 1 & turn heater on
- Change to preset 2 & turn heater on
- Change to preset 3 & turn heater on
- Check current preset
- Check temperature for current preset
- Set Temperature for Current Preset

### Check Battery Level:

Click the button 1 time quickly. The device will buzz between 1 and 5 times to indicate the battery level. 3 sets of 3 buzzes indicates the charge level is too low (<3.5V) Recharge immediately to prevent battery damage! 3 sets of 4 buzzes indicates the charge level is too high (>4.3V), please check charger!

Buzzes	Battery Level
5	High (above 4.1V)
4	Medium-High (3.95V - 4.1V)
3	Medium (3.8V - 3.95V)
2	Medium-Low (3.7V - 3.8V)
1	Low (below 3.7V)

### Turn Heater On & Draw:

Hold the button down. The device will buzz quickly 1, 2, or 3 times to indicate the current preset as the heater starts to heat up. When it is close to the preset temperature it will buzz 1 time again to indicate that the unit is ready for a draw. Continue to hold the button throughout the draw as the heater will hold the temperature at the preset level. The heater turns off whenever the button is released and will buzz once shortly thereafter to indicate shutdown.

**Change to Preset 1, 2, or 3 and Turn Heater On:**

Click the button 1, 2 or 3 times quickly to select preset 1, 2, or 3 then hold down the button. The selected preset will be saved and the heater will turn on.

**Check Current Preset:**

Click the button 2 times quickly. The device will buzz quickly 1, 2, or 3 times to indicate the current preset.

**Check Temperature for Current Preset:**

Click the button 3 times quickly. The device will give 2 sets of buzzes. The 1<sup>st</sup> buzz gives the hundreds place and the 2<sup>nd</sup> buzz gives the tens place (in degrees F) as shown in the table to the right.

**Set Temperature for Current Preset:**

Click the button 4 times quickly. The device will buzz back 4 times quickly. Using the table above, select the temperature by clicking as indicated. For example, to set the temperature to 390, click 4 times to start and wait for 4 buzzes. Then click 3 times and wait for 3 buzzes back. Then click 9 times to finish.

**Temperature vs. Buzzes/Clicks:**

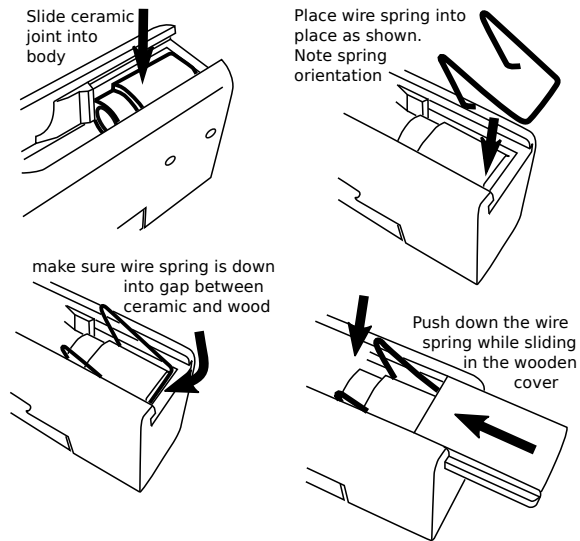
Buzzes/Clicks	Temp F (C)
2 then 5	250
2 then 6	260
2 then 7	270
2 then 8	280
2 then 9	290
3 then 0	300
3 then 1	310
3 then 2	320
3 then 3	330
3 then 4	340
3 then 5	350
3 then 6	360
3 then 7	370
3 then 8	380
3 then 9	390
4 then 0	400
4 then 1	410
4 then 2	420
4 then 3	430
4 then 4	440

**Cleaning:**

The glass mouthpiece and removable ceramic parts should be removed and cleaned with hot water and/or alcohol as needed. The oven can be cleaned with compressed air and/or wiping with a cotton swab when cool.

**Reassembling The Mouthpiece:**

Before assembling, remove the capsule from the oven.



**Finishing & Maintaining the Wood Surface:** Firewood aromatherapy devices come with 100% natural Beeswax and Mineral Oil or unfinished. For best results, unfinished wood should be sanded and finished with a natural oil/wax finish. Finished wood can be restored by lightly sanding and reapplying a fresh coat of the original finish.

**Warranty:** Firewood Aroma Tech Inc. One (1) Year Limited Warranty Information  
Firewood Aroma Tech Inc. grants purchasers of the Firewood a warranty against defects in materials and workmanship under normal use of the device for a period of one (1) year from the date of retail purchase by the original purchaser of the unit. If a physical defect arises and a claim is received within the Warranty Period Firewood Aroma Tech Inc. will either (1) repair the device, (2) exchange the device, or (3) refund the purchase price of the device, at the discretion of the company.

**Exclusions and Limitations :**

The Limited Warranty applies only to devices manufactured by Firewood Aroma Tech Inc. This warranty does not apply to: (a) to damage caused by accident, abuse, misuse, or other external causes; (b) to damage caused by operating the device outside the permitted or intended uses; (c) to a device or part that has been modified to alter functionality or capability; (d) to cosmetic damage, including but not limited to scratches, dents, and discolored wood; (e) to damage caused by use of unapproved batteries, charger or power supply; (f) damage to ceramic parts after 1 month from the purchase date; (g) damage caused by disassembling the device by removing the screws.

The Warranty does not apply to normal performance degradation of batteries, neglecting to adhere to cleaning instructions, or heat damage due to improper use of the device. Intentionally disassembling or attempting repairs on your device may void the warranty and/or result in a reassembly fee.

Please email [service@firewoodvapes.com](mailto:service@firewoodvapes.com) for warranty service. Please include a description of the problem and the Name and Date of purchase.