



**LOBO COMMANDER™**

lobocommander.com

# 401TC

**Rechargeable Dog Training Collar**

**With Wireless Remote**

**Waterproof**

**User's Manual**

# Important Safety Information

## Explanation of Attention Words and Symbols used in this guide



This is the safety alert symbol. It is used to alert you to potential personal injury hazards. Obey all safety messages that follow this symbol to avoid possible injury or death.

### **⚠ WARNING**

WARNING indicates a hazardous situation which, if not avoided, could result in death or serious injury.

### **⚠ CAUTION**

CAUTION, used with the safety alert symbol, indicates a hazardous situation which, if not avoided, could result in minor or moderate injury.

### **CAUTION**

CAUTION, used without the safety alert symbol, indicates a hazardous situation which, if not avoided, could result in harm to your pet.

### **⚠ WARNING**

**Not for use with aggressive dogs.** Do not use this Product if your dog is aggressive, or if your dog is prone to aggressive behavior. Aggressive dogs can cause severe injury and even death to their owner and others. If you are unsure whether this product is appropriate for your dog, please consult your veterinarian or certified trainer.

### **⚠ CAUTION**

**Safety during on-leash training.** It is vitally important that you and your dog remain safe while learning during on-leash training. Your dog should be on a strong leash, long enough for him to attempt to chase an object, but short enough for him not to reach a road or other unsafe area. You must also be physically strong enough to restrain your dog when he tries to chase.

### **CAUTION**

**Risk of skin damage.** Please read and follow the instructions in this manual. Proper fit of the collar is important. A collar worn for too long or made too tight on the pet's neck may cause skin damage. Ranging from redness to pressure ulcers; this condition is commonly known as bed sores.

- Avoid leaving the collar on the dog for more than 12 hours per day.
- When possible reposition the collar on the pet's neck every 1 to 2 hours.
- Check the fit to prevent excessive pressure; follow the instructions in this manual.
- Never connect a lead to the electronic collar; it will cause excessive pressure on the contacts.
- When using a separate collar for a lead, don't put pressure on the electronic collar.
- Wash the dog's neck area and the contacts of the collar weekly with a damp cloth.
- Examine the contact area daily for signs of a rash or a sore.

- If a rash or sore is found, discontinue use of the collar until the skin has healed.
- If the condition persists beyond 48 hours, see your veterinarian.

These steps will help keep your pet safe and comfortable. Millions of pets are comfortable while they wear stainless steel contacts. Some pets are sensitive to contact pressure. You may find after some time that your pet is very tolerant of the collar. If so, you may relax some of these precautions. It is important to continue daily checks of the contact area. If redness or sores are found, discontinue use until the skin has fully healed.

The Rechargeable Remote Training Collar must be used only on healthy dogs. We recommend that you take your dog to a veterinarian before using the collar if he is not in good health.

Thank you for choosing the Lobo Commander 401TC. Our mission is to offer the best electronic training solutions. We want to ensure your pet's safety by providing you with the tools and techniques to successfully train your pet. You and your pet deserve a companion that includes memorable moments and a shared understanding together. If you have any questions, please contact us for Customer Service at [Support@LoboCommander.com](mailto:Support@LoboCommander.com)

---

## Table of Contents

Components .....	5
Other Items You May Need .....	5
How the System Works .....	6
Features .....	6
Key Definitions .....	7
<b>Operating Guide</b> .....	9
Prepare the Remote Transmitter .....	9
Prepare the Receiver Collar .....	11
Fit the Receiver Collar.....	12
To Pair the Remote Transmitter and Receiver Collar.....	15
Two Dog System.....	15
<b>Training Guide</b> .....	16
General Tips.....	16
Teaching Your Pet the Positive Tone.....	16
Find the Best Stimulation Level for Your Pet .....	17
<b>Frequently Asked Questions</b> .....	18
<b>Troubleshooting</b> .....	19
Test Light Instructions .....	19

## Components



## Other Items You May Need

- Non-metallic collar and 10-foot leash

# How the System Works

Now you can experience the difference a Rechargeable Remote Training Collar can make. Spend less time training and more time enjoying your dog. The Rechargeable Remote Training Collar is easy to use with an advanced digital display that tells you exactly what level of stimulation/vibration you are using.

The Rechargeable Remote Training Collar assists you in controlling your pet without a leash in a range of up to 400 yards. When you push a button, a signal sending from your remote activates your dog's Receiver Collar. He receives a safe but annoying stimulation. He'll quickly learn the association between his behavior and your correction; in no time, you'll have a better-behaved pet. The Rechargeable Remote Training Collar has been proven safe comfortable, and effective for both small and large dog breeds.

Using the Rechargeable Remote Training Collar consistently and correctly, any basic obedience commands can be taught and many misbehaviors that your pet exhibits can be corrected.

**Important: The Rectangleable Remote Training Collar has a range up to 400 yards. Hold the Remote Transmitter in a horizontal position away from your body to achieve optimum range. Terrain, weather, vegetation, transmission from other radio devices, and other factors will affect the maximum range.**



---

## Features

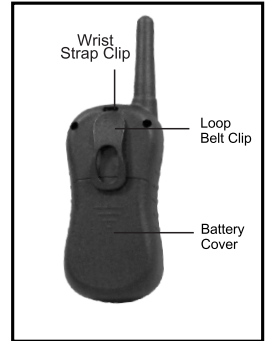
- Range up to 400 yards
- 16 levels of stimulation (1-16 levels)
- 16 levels of vibration (1-16 levels)
- Individual Stimulation only button
- Individual Vibration only button
- Individual Tone only button
- Train up to 2 dogs
- Big Blue Backlight LCD
- Easy to read Digital Display on Transmitter displays current Stimulation/Vibration Level and battery status
- Rechargeable Batteries in both the Remote Transmitter and Receiver Collar
- Waterproof Receiver Collar

# Key Definitions

**Remote Transmitter:** Transmits the signal to the Receiver Collar.

**Tone Only Button (Yellow):** Sends an audible tone to the collar. No stimulation is delivered.

**Stimulation Only Button (Red)/Vibration Only Button(Blue):** Delivers stimulation/vibration through the Contact Points on the Receiver Collar at the level shown on the Digital Display. When held down for 10 consecutive seconds, the Transmitter will “time-out”, and stimulation/vibration cannot be delivered for 5 seconds. You must release and press the button again after the 5 second time-out period, before additional stimulation/vibration can be delivered.



**Stim/Vibra Down Button (-):** Decreases Stimulation/Vibration Level by 1.

**Stim/Vibra Up Button (+):** Increases Stimulation/Vibration Level by 1.

**Digital Display:** Indicates which function the Transmitter is currently performing, Stimulation/Vibration Level, pairing mode, dog channel 1/2 and battery status. See Prepare the Remote Transmitter section for more details.

**Transmitter Indicator Light:** Red indicates Transmitter is performing the current chosen function.

**Charging Jack:** For connecting the charger.

**Receiver Collar:** Delivers stimulation, vibration or tone on a signal from the Remote Transmitter. It is waterproof.

**On/Off Button:** Momentarily pressing and holding this button turns the Receiver Collar on and off.

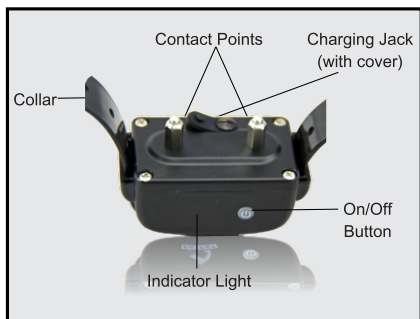
**Contact Points:** Deliver stimulation/vibration to your pet from the Remote Transmitter.

**Receiver Indicator Light:** Indicates when the Receiver Collar has been turned on or off or a button is pressed.

**Red LED:** Indicates low battery or in charging condition and when static stimulation or vibration button is pressed.

**Green LED:** Indicates good battery and when tone button is pressed. Also indicates when pairing mode or charging is completed.

## Receiver Collar



**Charging Jack:** For connecting the charger. Although the Receiver Collar is waterproof without the charger cover, keep the cover in place when not charging to keep debris out of the openings.

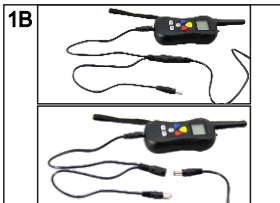


# Operating Guide

## Step 1 Prepare the Remote Transmitter

### 1 Charge the Remote Transmitter

1. Insert the small charging jack into the charging port on the remote(1A).
2. Connect the splitter cable to the USB cable connected to the charging head(1B).
3. Plug the charger into a standard wall outlet (1C).
4. Charge the remote transmitter for up to 4 hours for the first charge. Subsequent charging should take 3 hours or less. Note: The Battery Indicator will scroll during charging and the red LED light will stay solid while charging. Once charging is complete, the Battery Indicator will become solid and the Red LED Light will flash, indicating charging is complete.
5. When charging is completed, remove the charger connector.














### Turn ON the Transmitter

Power up the Transmitter by pressing any button. The display will turn on when you press any button.

## Transmitter Digital Display

The display stays on for approximately 30 seconds after a button press. After 30 seconds with no button press, the blue backlight shuts off first, and if no button press with another five minutes, the display shuts off and the Transmitter goes into battery conservation mode. Pressing any button will turn the display back on. The symbols on the display are explained below.

	Indicates stimulation/vibration levels ranging from 1-16, and appears in the lower middle part.		Stimulation mode symbol indicates Stimulation button press on transmitter.
	Indicates the active dog receiver and appears in the upper left and right corners next to the battery indicator.		Vibration mode symbol indicates Vibration button press on transmitter.
	Indicates battery's power level. Note: The battery indicator will flash every second to indicate low battery.		Tone mode symbol indicates Tone button press on transmitter.
	Indicates Transmitter is ready to pair with Receiver Collar. Press  button for 3 seconds to display and begin pairing.		Indicates sending signal to Receiver Collar when  and  buttons are held simultaneously.

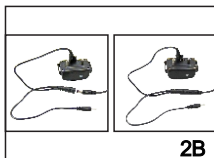
## Transmitter LED Indicator Light – Function and Response

Button	Button Function	Transmitter Indicator Light Response
Tone (yellow)	Delivers audible tone to collar	Green LED on for the length of button press
Stimulation (red)	Delivers stimulation to collar based on current level shown on Digital Display (stimulation will time-out for 5 seconds if pressed continuously for 10 seconds and will reset after timeout period)	Red LED on for length of button press
Vibration (blue)	Delivers vibration to collar based on current level shown on Digital Display (vibration will also time-out after button is held for 10 continuous seconds)	Red LED on for length of button press
+ and - Buttons held simultaneously	Transmits Pairing command to Receiver Collar when P is visible on Digital Display	Green LED on for the length of button press

## Step 2 Prepare the Receiver Collar

### Charge the Receiver Collar

1. Lift the rubber cover protecting the Receiver Collar Charging Jack(2A).
2. Insert the larger charging jack into the charging port on the receiver(2B).
3. Connect the splitter cable to the USB cable connected to the charging head(2C).
4. Plug the charger into a standard wall outlet.
5. Charge the receiver for up to 4 hours for the first charge. Subsequent charging should take 3 hours or less. Note: The red LED light will stay solid while charging . Once charging is complete, the LED Light will change to green.
6. When charging is complete, remove the charger connector.



### To turn Receiver Collar On

1. Press and hold the On/Off Button until the Green LED light comes on.  
(This takes approximately one second.)
2. Release the On/Off Button.  
In normal mode, the Green LED will flash once every 5 seconds, indicating the Receiver Collar is on and ready to receive a signal from the Handheld Transmitter.

### To turn Receiver Collar Off

1. Press and hold the On/Off Button until the Red LED light shuts off.  
(This takes approximately three seconds.)
2. Release the On/Off Button. Note: To extend the life of the batteries, turn the Receiver Collar off when it is not in use.

## Receiver Indicator Light – Function and Response

Receiver Collar Function	Green LED Response
Power on	Flashes once
Normal operation - Good battery	1 flash every 5 seconds
Training tone	On length of button press
In pairing position	Flashes once every second for 16 seconds
Pairing Complete	Flashes rapidly for five times
Charging Complete	Stays solid until charger removed

Receiver Collar Function	Red LED Response
Power off	On for 3 seconds
Normal operation - Low battery	Flashes rapidly
Static stimulation/Vibration	On length of button press
Charging	On length of charging

## Rechargeable Batteries

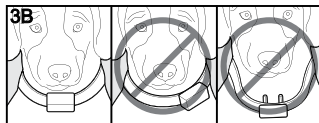
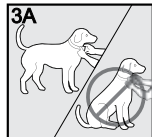
- The rechargeable Lithium Ion batteries are not memory sensitive and do not require depletion before charging.
- The batteries come partially charged from the factory, but will require a full charge (3-4 hours) before the first use.
- Remember —always keep batteries away from flame
- When storing the unit for long periods, remember to regularly give batteries a full charge (2-3 hours). This should be done once every 4 to 6 weeks.
- The Training Collars are equipped with a safety feature to prevent over charging.
- If your equipment has not been charged for an extended period, you may experience a decrease in battery life the first few uses. Afterwards, the battery life will return to previous capacity levels.
- You should expect hundreds of recharge cycles from your batteries. However, all rechargeable batteries lose capacity over time relative to the number of recharge cycles they experience. This is normal. If your operating time drops to half of the original life, contact the Customer Care Center. at [Support@LoboCommander.com](mailto:Support@LoboCommander.com)

## Fit the Receiver Collar

**Important: The proper fit and placement of your Receiver Collar is important for effective training. The Contact Points must have direct contact with your pet's skin on the underside of his neck.**

To assure a proper fit, please follow these steps:

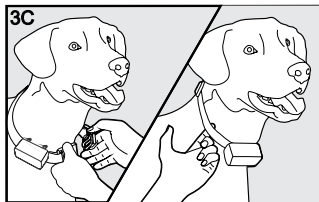
1. Make sure that the Receiver Collar is turned off.
2. Have your pet standing comfortably (3A).
3. Place the Receiver Collar on your dog's neck close to the ears. Center the Contact Points underneath your dog's neck, touching the skin. Note: It is sometimes necessary to trim the hair around the Contact Points to make sure that contact is consistent (3B).



### CAUTION

Do not shave the pet's neck as this may increase the risk of skin irritation.

4. The Receiver Collar should fit snugly, yet loose enough to allow one finger to fit between the strap and your pet's neck (3C).
5. Allow your pet to wear the collar for several minutes then recheck the fit. Check the fit again as your pet becomes more comfortable with the Receiver Collar.
6. Trim the collar as follows ( ):
  - a. Mark the desired length of the collar with a pen. Allow for growth if your pet is young or grows a thick winter coat.
  - b. Remove the Receiver Collar from your pet and cut off the excess.



### CAUTION

**Risk of skin damage.** For comfort, safety and effectiveness of this product, please ensure that you check the fit of your pet's collar frequently. If any skin irritation is observed, discontinue the use of the collar for a few days. If the condition persists beyond 48 hours, see your veterinarian.

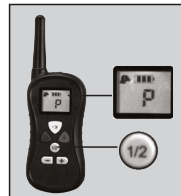
Do not attach a leash to the Remote Training Collar. This can result in pulling the Contact Points too tightly against your pet's neck. You may put a separate non-metallic collar on your dog's neck and attach a leash. Do use a harness for attaching a leash and/or tags while using the Remote Training Collar.

Please refer to page 2 for additional information.

## Step 4 To Pair the Remote Transmitter and Receiver Collar

If your Receiver Collar does not beep when the Tone Button of the Remote Transmitter is pressed, or if you feel the Receiver Collar is not responding to the Remote Transmitter, follow these steps to pair:

1. Place the transmitter into pairing mode by pressing the  $\frac{1}{2}$  Button for 3 seconds until the digital display show "P". Choose the channel, 1 or 2, you wish to pair the collar to, by quickly pressing the  $\frac{1}{2}$  button until the proper channel is displayed.
2. With the Receiver Collar off your pet, turn the Receiver Collar off. Press and hold the On/Off Button until the Green LED flashes every second on the Receiver Collar. This continues for 16 seconds, within which pairing should be completed.
3. While the green led light is flashing for 16 seconds, press and hold the up (+) and down (-) buttons simultaneously. The green led should flash rapidly 5 times on the receiver, indicating it has learned the transmitter ID.
4. Press and hold the  $\frac{1}{2}$  button again until the "P" changes back to the normal operating screen, about 3 seconds, to exit pairing
5. Press any of the Stimulation/Vibration/Tone Buttons on the transmitter. The Receiver Collar should respond accordingly, verifying that it is paired with the transmitter.



### Two Dog System

Note: If you wish to add another receiver collar to the training system, extra Receiver Collars are available where you bought your Remote Training Collar.

### To Add Dog 2

#### Remote Transmitter

1. Press 1/2 Button and change to the other Channel for Dog 2.
2. Turn on the Receiver Collar for Dog 2, press any Mode Buttons to verify function.
3. If Dog 2 Receiver Collar does not respond. Pairing may be needed. Repeat Steps in To Pair the Remote Transmitter and Receiver Collar above.

# Training Guide

## General Tips

- Eliminate one misbehavior or teach one obedience command at a time. If you move too fast with training, your pet may become confused.
- Be consistent. Correct your pet every time he misbehaves.
- Unless you can supervise him, it is recommended that you restrict your pet from situations in which he has a history of misbehaving. However, setting up a situation as a training session can dramatically improve your chances of success.
- If your pet reacts to the tones by hiding or acting fearful, redirect his attention to a simple and appropriate behavior, such as the “sit” command.
- Pets should be at least 6 months old before using the Training Collar.
- Only let responsible family members use the Training Collar. It is not a toy!
- Other pets in hearing range will be affected by the training tones. Therefore, training sessions should be conducted out of hearing range of other pets.

### **⚠ WARNING**

Never use the Rechargeable Remote Training Collar to correct or eliminate any form of aggressive behavior. We recommend you contact your local veterinarian or professional trainer to determine if your pet might be aggressive. See page 2 for more information.

## Teaching Your Pet the Positive Tone

Before using the Training Collar to correct your pet, spend 10 to 15 minutes per day for 2 or 3 days helping him create the association of the tone with reward and praise. To accomplish this:

1. Push the Tone Button (yellow) for 2 consecutive seconds.
  2. Release the button and immediately reward your pet with verbal praise, petting, or a small food reward. Spend 3 to 5 seconds on your rewarding.
  3. Wait a few minutes and repeat holding the Tone Button for 2 seconds following with praise.
- Vary the reward to prevent your pet from anticipating a specific type. This stage of training is complete when your pet obviously anticipates a reward when he hears the positive tone.

# Find the Best Stimulation/Vibration Level for Your Pet

**Important: Always start at the lowest level and work your way up.**

The Remote Training Collar has 16 Stimulation/Vibration Levels. This allows you to choose the Stimulation/Vibration that is best for your pet.

Once you have placed the Receiver Collar on your pet, it is time to find the Stimulation/Vibration Level that is best for him. This is called the Recognition Level.

A slight change in your pet's behavior, such as looking around in curiosity, scratching at his collar, or flicking his ears, indicates the Recognition Level that is best for him.

Follow the steps below to find your pet's Recognition Level:

1. Starting at Level 1 on the Digital Display, press the Stimulation Button (red) or Vibration Button (blue) continuously for 1 to 2 seconds, Note: When the Stimulation/Vibration Button is held down for 10 consecutive seconds, the Transmitter will "time-out", and you must release and press the button again before additional stimulation/vibration can be delivered.
2. If your pet shows no reaction, repeat the Stimulation/Vibration Level several times before moving up to the next level.
3. **YOUR PET SHOULD NOT VOCALIZE OR PANIC WHEN RECEIVING STIMULATION/VIBRATION. IF THIS HAPPENS, THE STIMULATION/VIBRATION LEVEL IS TOO HIGH AND YOU NEED TO GO BACK TO THE PREVIOUS LEVEL AND REPEAT THE PROCESS.**
4. Move up through the Stimulation/Vibration Levels until your pet reliably responds to the stimulation/vibration.
5. If your pet continues to show no response at Level 16, check the fit of the Receiver Collar. If this still does not yield any results, your pet's hair will need to be trimmed around the Contact Points.

If, after completing all of these steps, your dog still does not indicate he is feeling the stimulation/vibration, please contact us for Customer Service.

---



# Frequently Asked Questions

<b>Is the Stimulation/Vibration safe for my pet?</b>	<ul style="list-style-type: none"><li>• While the Stimulation/Vibration is unpleasant, it is harmless to your pet. Electronic training devices require interaction and training from the owner to achieve desired results.</li></ul>
<b>How old does my pet have to be before using the Rechargeable Remote Training Collar?</b>	<ul style="list-style-type: none"><li>• Your pet should be able to recognize basic obedience commands such as “Sit” or “Stay”. Pets should be at least 6 months old before using the Training Collar.</li></ul>
<b>Once my pet is trained and has been obeying my commands, will he have to continue to wear the Receiver Collar?</b>	<ul style="list-style-type: none"><li>• Probably not. You may need to reinforce training with the Receiver Collar from time to time.</li></ul>
<b>Is the Receiver Collar waterproof?</b>	<ul style="list-style-type: none"><li>• Yes.</li></ul>
<b>Will I get exactly 400 yards of range with the Rechargeable Remote Training Collar?</b>	<ul style="list-style-type: none"><li>• The range of the Rechargeable Remote Training Collar will vary according to terrain, weather, vegetation, as well as transmission from other radio devices. See “How the System Works” for tips on maximizing your range.</li></ul>
<b>How long can I continuously deliver stimulation/vibration to my pet?</b>	<ul style="list-style-type: none"><li>• The maximum amount of time you can press the Stimulation or Vibration Button and deliver stimulation/vibration to your pet continuously is 10 seconds. After this, there’s a time-out and stimulation/vibration cannot be delivered for 5 seconds. After the 5 second time-out period, Button can be pressed and stimulation/ vibration can be delivered again.</li></ul>

# Troubleshooting

**My pet does not respond when I press a button.**

- Make sure the Receiver Collar has been turned on.
- If your range has reduced from the first time you used the Rechargeable Remote Training Collar, the battery(s) may be low in either the Remote Transmitter or Receiver Collar.
- Many factors can impact the amount of range you have with the Rechargeable Remote Training Collar. See “How the System Works”.
- Test the Receiver Collar. See “Test Light Instructions” for details.
- Increase the Stimulation/Vibration Level. Refer to “Find the Best Stimulation/Vibration Level For Your Pet” for more information.
- Make sure the Receiver Collar’s Contact Points are placed snugly against your pet’s skin. Refer to “Fit the Receiver Collar” for more information.

**The Receiver Collar will not turn on.**

- Make sure the Receiver Collar has been charged. For the initial charge, be sure to charge it for 4 hours. Subsequent charges only take 2-3 hrs.

**The Receiver Collar is not responding to the Remote Transmitter.**

- Verify the Receiver Collar is on.
- If the Indicator Light does not come on when any button is pressed on the Transmitter, ensure that the Receiver has been charged.
- If the first two solutions did not resolve your problem, see “To Pair the Remote Transmitter and the Receiver Collar.”

## Test Light Instructions



1. Turn the Receiver Collar on.
2. Hold the Test Light Contacts to the Contact Points.
3. Press the Stimulation Button on the Remote Transmitter.
4. The Test Light will flash. Note: At higher Stimulation Levels, the Test Light will flash brighter.
5. Turn the Receiver Collar off.

Save the Test Light for future testing. Note: If the Test Light does not flash, recharge the batteries and re-test. If Test Light still does not flash, contact us for Customer Service.

# Warranty Registration

To register your training collar  
for the Limited Lifetime Warranty,  
please visit **WWW.LOBOCOMMANDER.COM**  
and claim your **FREE GIFT!**



**LOBO COMMANDER** <sup>™</sup>

lobocommander.com



**LOBO COMMANDER™**

lobocommander.com

6140 State Hwy 6, Suite 82  
Missouri City, TX 77459

Support@LoboCommander.com

Copyright ©2014 Lobo Commander™ All Rights Reserved