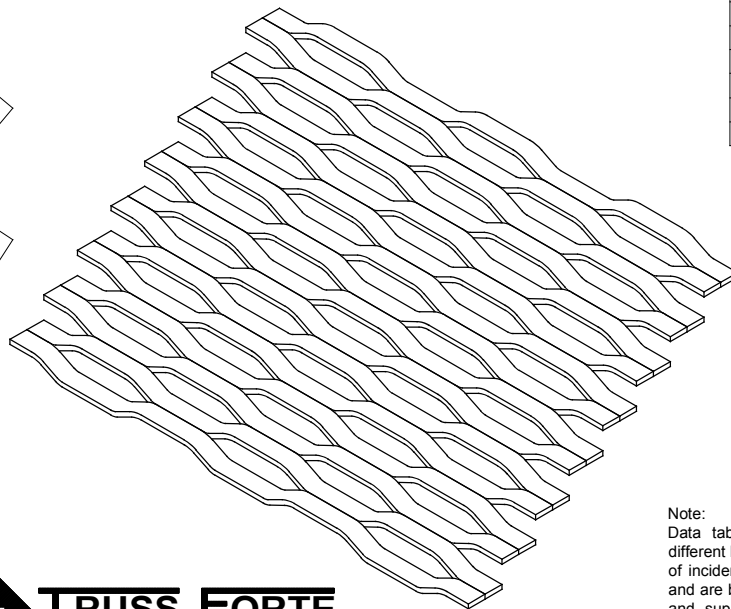
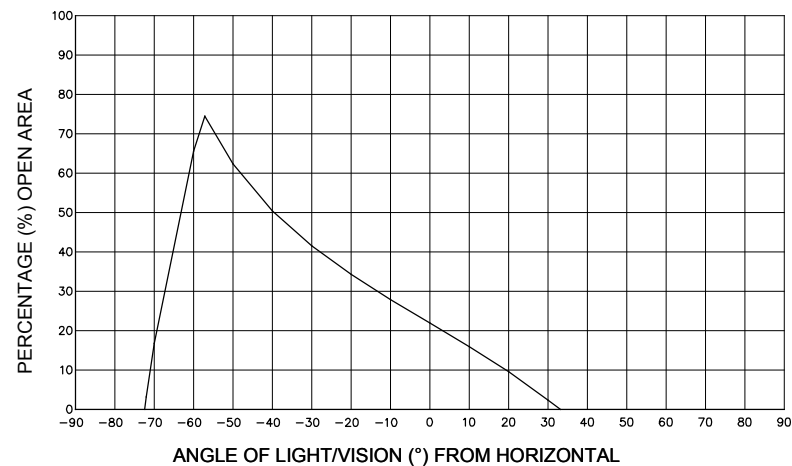


## OPEN AREA OF MESH (LN1663A) VS VIEW DIRECTION

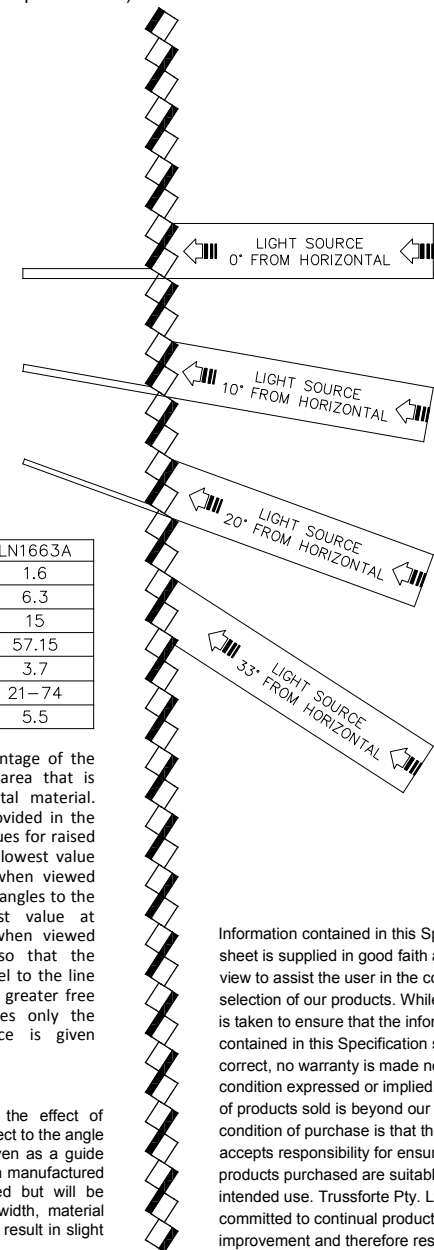


Product Code	LN1663A
Material Thickness (mm)	1.6
Strand Width (mm)	6.3
SWM (mm)	15
LWM (mm)	57.15
Mass (kg/m <sup>2</sup> )	3.7
Free Air Space (%)	21–74
Overall Height (Approx. mm)	5.5

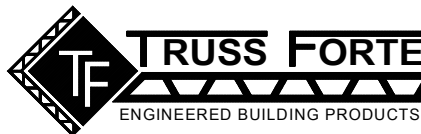
Free air space is the percentage of the viewable expanded sheet area that is space, as opposed to metal material. Approximate values are provided in the product selection chart. Values for raised expanded metal vary from lowest value at normal incidence (i.e. when viewed with the sheet held at right angles to the line of vision) to highest value at maximum incidence (i.e. when viewed with the sheet slanting so that the thickness of strand is parallel to the line of vision, thus presenting a greater free area). For flattened meshes only the value at normal incidence is given (relevant).

**Note:**  
Data tabulated is to assist in understanding the effect of different light source of viewing directions in respect to the angle of incidence to the mesh. Values listed are given as a guide and are based on idealised modeling. The mesh manufactured and supplied may not be exactly as tabulated but will be representational. Any variation to the strand width, material thickness or short way measurement (SWM) will result in slight variations to the percentage open areas listed.

Mesh installed for privacy screening on upper balcony.  
(Louvre's angled down towards private area)



Information contained in this Specification sheet is supplied in good faith and with the view to assist the user in the correct selection of our products. While every care is taken to ensure that the information contained in this Specification sheet is correct, no warranty is made nor is any condition expressed or implied. As the use of products sold is beyond our control, a condition of purchase is that the purchaser accepts responsibility for ensuring that products purchased are suitable for the intended use. Trussforte Pty. Ltd. is committed to continual product improvement and therefore reserves the right to change details and designs without notice. © Trussforte Pty. Ltd.



16 Gaine Road, Dandenong South, Vic. 3175. Ph 1300 362 813