

THIS DESIGN OR DRAWING IS NOT SOLID, BUT LENT AND IS SUBJECT TO RECALL. REPRODUCTIONS OF THIS DRAWING IN ANY MATERIAL FORM ARE RESERVED TO TRUSSFORTE BUILDING PRODUCTS PTY. LTD. UNDER COPYRIGHT LAW.

DO NOT SCALE

COMMERCIAL STOCK SIZES EXCEPTED AND UNLESS OTHERWISE NOTED, TOLERANCES AND DIMENSIONS ARE: METRIC

SIZE TO	MACH.	CAST*
6 MM	± 0.1	± 0.5
30 MM	± 0.2	± 1.0
100 MM	± 0.3	± 1.5
300 MM	± 0.5	± 2.0
1000 MM	± 0.6	± 3.0
2000 MM	± 1.2	± 5.0

* INCLUDES STRUCTURAL STEEL WORK

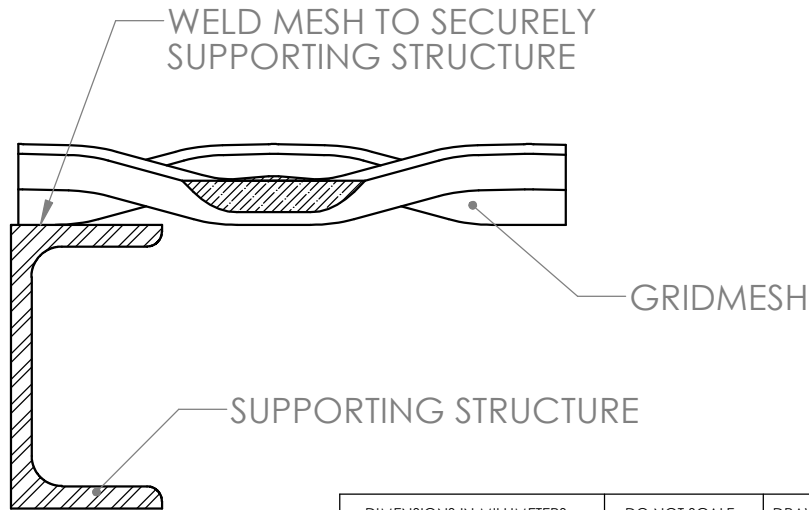
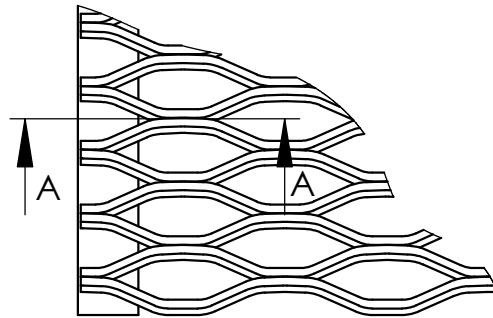
REMOVE ALL BURRS AND SHARP EDGES BY 0.3x45° UNLESS OTHERWISE NOTED

SURFACE FINISH

	Roughness Value	
	Met μ m	Grade No.
ROUGH	50	N12
	25	N11
	12.5	N10
MED	6.3	N9
	3.2	N8
FINE	1.6	N7
S.FINE	0.8	N6
POLISH	0.4	N5
LAP	0.2	N4
	0.1	N3
	0.05	N2
	0.025	N1

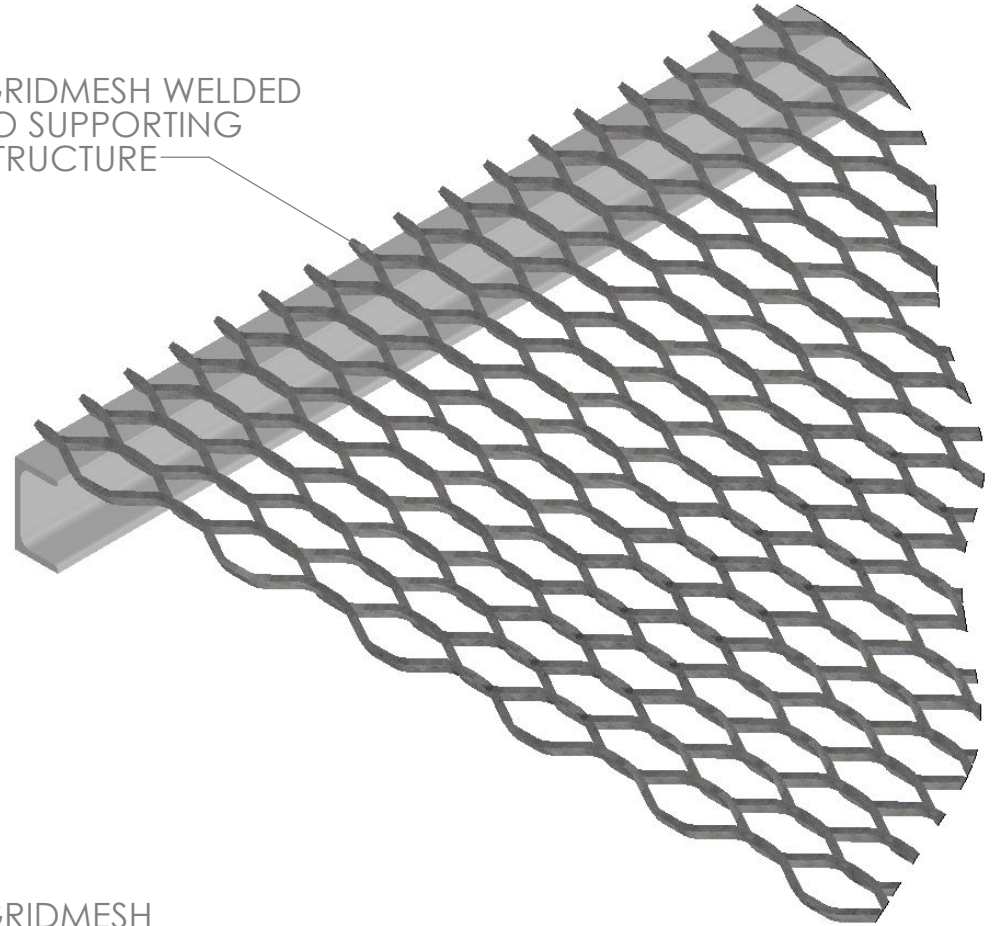
ANGULARITY TOLERANCE < 0° 7'

CONCENTRICITY 0.1 MM

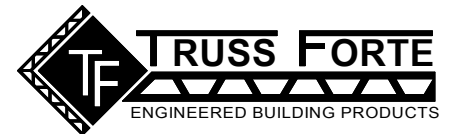


SECTION A-A
SCALE 1 : 2

GRIDMESH WELDED TO SUPPORTING STRUCTURE



DIMENSIONS IN MILLIMETERS	DO NOT SCALE	DRAWN M.G.	DATE 14/12/2015
MATERIAL -	CHECKED -	SCALE 1:5	
FINISH -		DRAWING PRACTICE TO AS1100 - PROJECTION SYSTEM (UNLESS NOTED)	
TITLE			
GRIDMESH FIXING EXAMPLE 2			



16 Gaine Road, Dandenong South, Vic. 3175. Ph 1300 362 813

DRG No.	GRIDFIX02	REV.	-
SHEET 1 OF 1	WEIGHT (KG) 47.99	A4	