

THIS DESIGN OR DRAWING IS NOT SOLID, BUT LENT AND IS SUBJECT TO RECALL. REPRODUCTIONS OF THIS DRAWING IN ANY MATERIAL FORM ARE RESERVED TO TRUSSFORTE BUILDING PRODUCTS PTY. LTD. UNDER COPYRIGHT LAW.

DO NOT SCALE

COMMERCIAL STOCK SIZES EXCEPTED AND UNLESS OTHERWISE NOTED, TOLERANCES AND DIMENSIONS ARE: METRIC

SIZE TO	MACH.	CAST*
6 MM	± 0.1	± 0.5
30 MM	± 0.2	± 1.0
100 MM	± 0.3	± 1.5
300 MM	± 0.5	± 2.0
1000 MM	± 0.6	± 3.0
2000 MM	± 1.2	± 5.0

* INCLUDES STRUCTURAL STEEL WORK

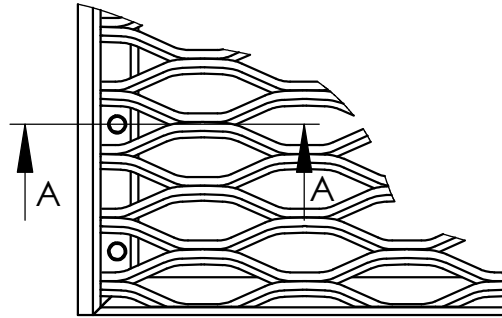
REMOVE ALL BURRS AND SHARP EDGES BY 0.3x45° UNLESS OTHERWISE NOTED

SURFACE FINISH

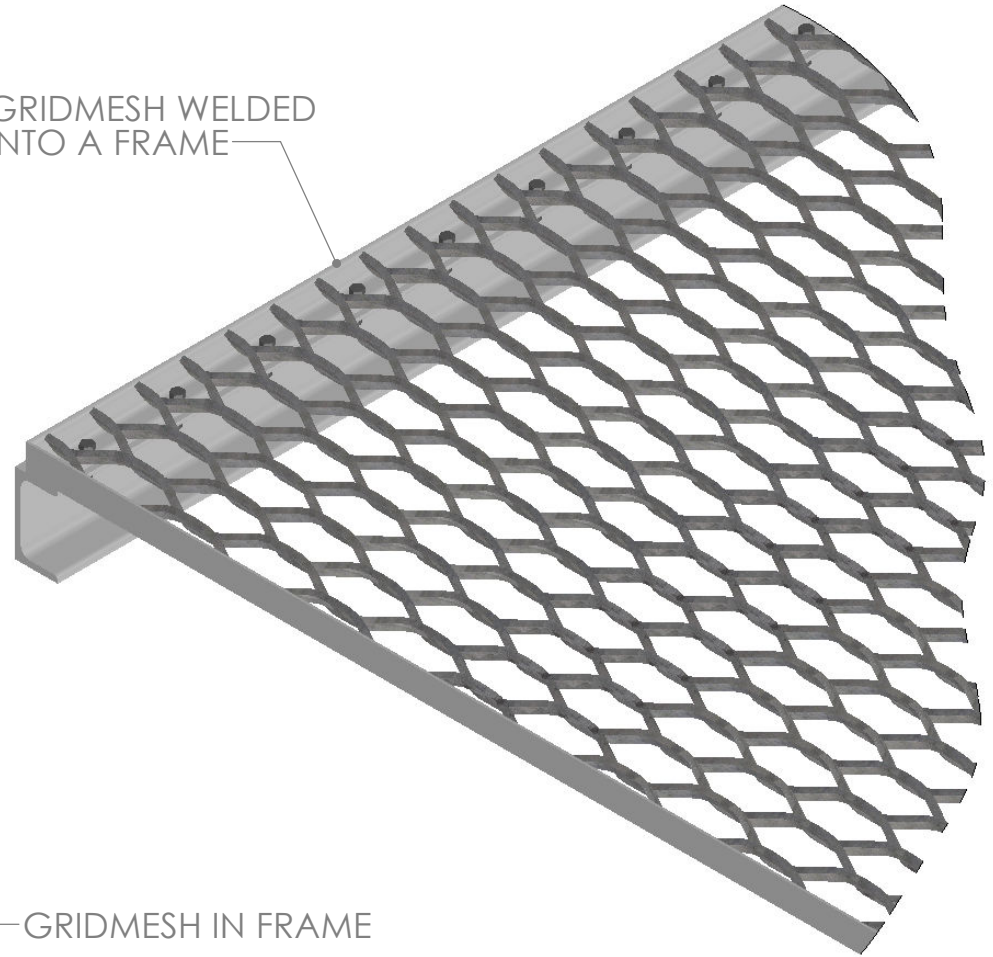
	Roughness Value	
	Met μ m	Grade No.
ROUGH	50	N12
	25	N11
	12.5	N10
MED	6.3	N9
	3.2	N8
FINE	1.6	N7
S.FINE	0.8	N6
POLISH	0.4	N5
	0.2	N4
LAP	0.1	N3
	0.05	N2
	0.025	N1

ANGULARITY TOLERANCE < 0° 7'

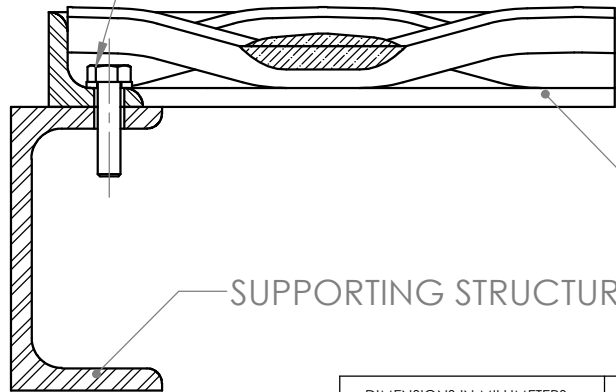
CONCENTRICITY 0.1 MM



GRIDMESH WELDED INTO A FRAME



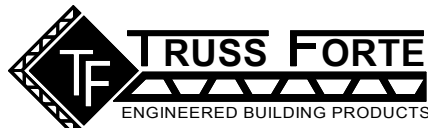
GRIDMESH FRAME BOLTED TO SUPPORTING STRUCTURE. WELDING TO SUPPORTING STRUCTURE IS ALSO AN ALTERNATIVE



GRIDMESH IN FRAME

SUPPORTING STRUCTURE

SECTION A-A
SCALE 1:2

DIMENSIONS IN MILLIMETERS	DO NOT SCALE	DRAWN M.G.	DATE 14/12/2015	 <p>TRUSS FORTE ENGINEERED BUILDING PRODUCTS</p> <p>16 Gaine Road, Dandenong South, Vic. 3175. Ph 1300 362 813</p>
MATERIAL	-	CHECKED -	SCALE 1:5	
FINISH	-	DRAWING PRACTICE TO AS1100 - PROJECTION SYSTEM (UNLESS NOTED)		
TITLE		GRIDMESH FIXING EXAMPLE 1		DRG No. GRIDFIX01
SHEET 1 OF 1		WEIGHT (KG) 56.24	A4	REV. -