

Resetting the Potentiometer



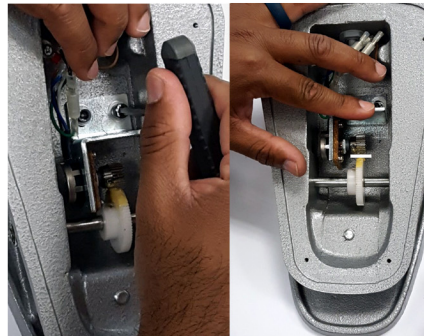
REQUIRED TOOLS

1. Allen wrench - 4M
2. Phillips screw driver
3. Allen wrench - 2M

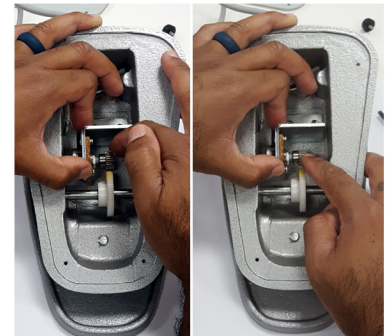
Adjusting Potentiometer:



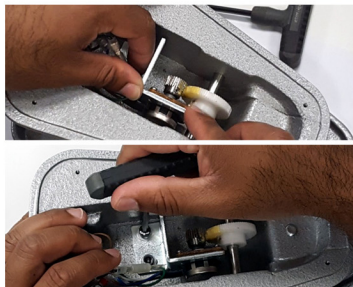
1. Unscrew the 4 feet using a Phillips screwdriver. Then remove the plastic cover and make sure the foot pedal is in the STOP position. Turn the power ON.



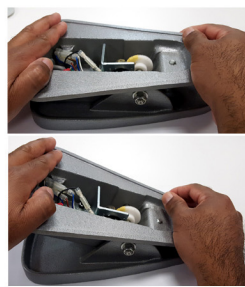
2. Loosen the 2 screws that connect the potentiometer (POT) to the bracket to the foot pedal housing. Separate the POT (silver gear) from the white plastic gear so they are not touching.



3. Rotate the POT gear all the way clockwise, then all the way counter-clockwise. You may have to repeat this process several times.



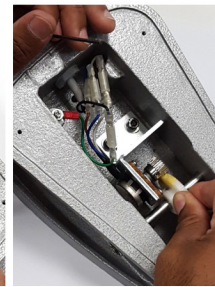
4. Once the wheel head begins to spin, rotate the POT gear back to where the wheel head stops. Push the bracket back so the 2 gears are FULLY engaged to one another. Tighten bracket down.



5. Push the pedal back and forth to test the START and STOP position of the potentiometer.



6. If the potentiometer is not stopping at the desired spot, loosen the set screw on the white gear using the 2M Allen wrench. Making sure the foot pedal is in the proper STOP position, turn the white gear forward or back to the desired STOP position. Tighten the set screw on the white gear.



7. Replace the plastic cover.