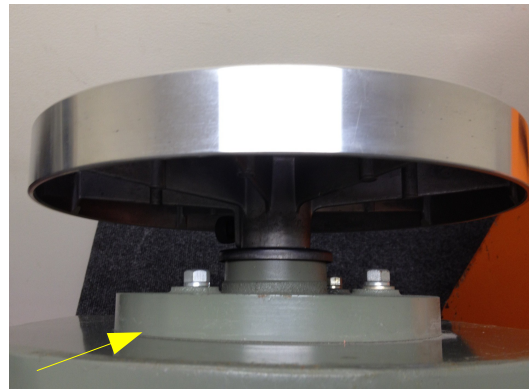


Can My RK-2 Fit a Two Piece Splash-pan??

In most cases the RK-2's can only fit a one piece splash-pan. A wheel with a round bearing holder with no groove and a wheel with a square bearing holder can only fit a one piece splash-pan.



Square bearing holder



Round bearing holder with no groove

If your RK-2 has a round bearing holder with a groove then it can hold a two piece splash-pan. Contact Shimpo Ceramics for additional splash-pan info.

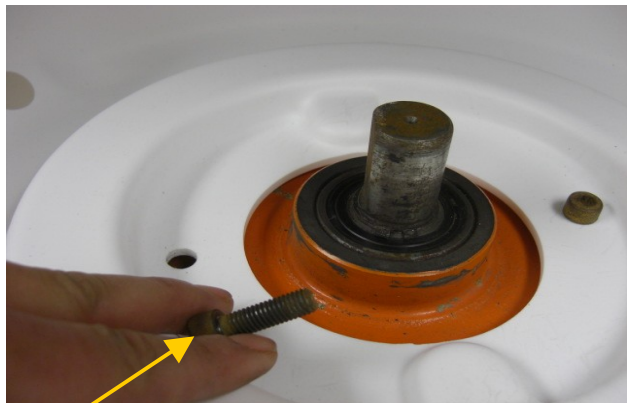


Round Bearing Holder with groove

**RK-2 bearing (Square with groove) = One piece splash pan Small
M8×50(2 bolt metric) required**



(1)Remove wheel head



**(2)Remove 2 bolts and replace with
M8×50 (2 bolts metric)**



**(3)Tighten 2 bolts to shaft
from**



**4)Wheel head bolt must be
tightened to flat side of
shaft to ensure wheel head is secure**



**(5)Tighten wheel head bolt
through the hole in pan**

How to select and install Splash pan

RK-2 bearing (round & no groove) = One piece splash pan Small



(1) Remove wheel head



(2) Remove the 2 bolts



(3) Tighten the 2 bolts



(4) Wheel head bolt must face to flat part of the shaft so the wheel head remains secure



(5) Tighten wheel head bolt from the hole in the splash pan