

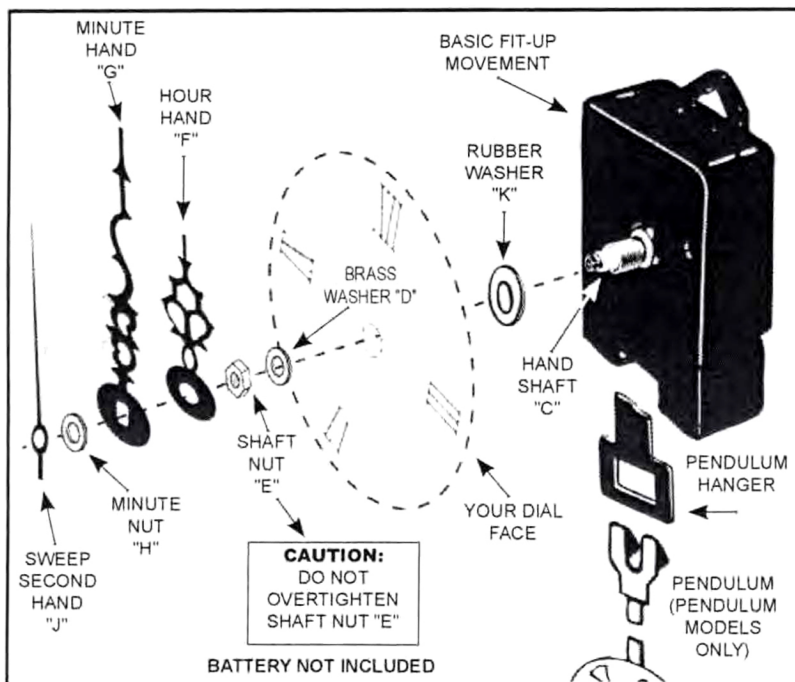
# INSTALLATION INSTRUCTIONS FOR FACELESS QUARTZ CLOCK MOVEMENTS

## INSTALLING CLOCK MOVEMENT

If movement comes with the type of metal hanger that fits over hand shaft, place round or round-notched hole in hanger over hand shaft "C". Hanger should fit into hanger channel molded into clock case. Hanging hole should be at top rear of movement. Next slip rubber washer "K" over hand shaft "C". Insert movement into clock case. Slip large brass washer "D" over hand shaft "C". Thread shaft of nut "E" onto stem and hand tighten gently:  
**DO NOT FORCE OR YOU WILL DAMAGE THE MOVEMENT.**

## INSTALLING CLOCK HANDS

If a protective film covers the hands, remove it before installing. Push hour hand "F" onto hand shaft "C" with protruding collar on hour hand towards movement. Press firmly onto top of white shaft. Place minute hand "G" onto hand shaft "C". Screw minute nut "H" securely onto hand shaft. If clock comes with sweep second hand "J" press stem of second hand into opening at end of hand shaft.

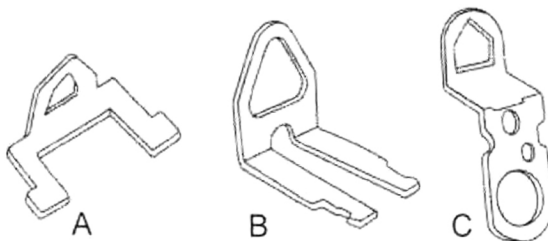


## INSTALLING BATTERY

For best results use only quality alkaline batteries. To insert battery, follow diagram in battery holder which is located in back of clock case. **CAUTION:** An incorrectly installed battery may damage movement and void warranty. Also, never leave a dead battery in clock. Clocks are self-starting and should begin running as soon as battery is inserted. **NOTE:** some movements may have an "on/off" switch on back of unit. This switch must be in the "on" position for the unit to run. The battery holder also states battery size.

## INSTALLING HANGER BRACKET

If movement comes with separate metal bracket, style "A", install from the front. Slide through two the notches at top of movement and push it back until bracket clicks firmly in place. Install bracket style "B" in same manner as style "A", but insert from rear of movement. Bracket style "C" slips over hand shaft. Add rubber washer.



## INSTALLING PENDULUM (Pendulum Movements only)

If pendulum hanger (located at bottom of unit) is secured by a retaining clip, gently push hanger out of clip so that it swings freely. With battery installed in movement, hook pendulum onto hanger. Pendulum should begin to swing on its own.

**IMPORTANT:** For pendulum to swing freely, movement must be properly centered in clock case and pendulum hanger must not rub against movement. Make sure movement is level in all directions.

## SETTING CORRECT TIME

A small knob or wheel located on the back of the movement can be turned to set the hands. Turn knob only in direction of arrow on case. Hands may also be set by moving minute hand with your fingers. Move minute hand only in a "clockwise" direction.

## REGULATING MOVEMENT

Since these movements are quartz-regulated, they will keep extremely accurate time and will require no regulation. Movements should maintain accuracy to within  $\pm 3-4$  minutes a year if properly installed.

## IF CLOCK STOPS RUNNING

The main reason a clock stops running is because of a weak battery, or the shaft nut is too tight. A weak battery will also cause the clock to keep incorrect time. For the best service from your clock, always use the best batteries available. If the battery is new and the clock stops, dust could have gotten into the movement, the battery terminals may not be making good contact, or the shaft nut is too tight.