



# COYOTE CONE SIX GLAZES

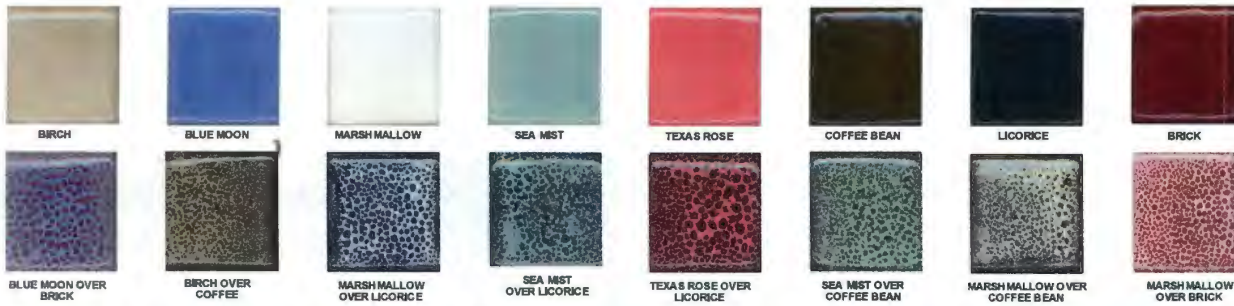


## ARCHIE'S GLAZES

Our most popular series, amazingly varied results with a single glaze.



## COPPER & IRON GLAZES



## TEXAS TWO STEP OIL-SPOT GLAZES

Texas Two Step glazes are a two part system. Layering a step 1 Undercoat with a step 2 Overcoat produces spectacular oil spot effects



## GLOSS GLAZES

Our Gloss glazes are shiny and stable. They don't break or run, but will provide a solid consistent coverage in a wide range of colors. Most are opaque, a few are slightly translucent. Try them under the Shino series or the Archie's series for interesting texture and color combinations.



## FRANK'S CELADONS

"Frank's Colored Celadons" are translucent glazes, great over brushwork, carvings and texture and colored clays. We have expanded the traditional palette of celadons to include a rich variety of colors. These glazes are very user friendly.

SEDONA SUNSET



## MOTTLED GLAZES

Our Mottled series is very user friendly. Great for overlapping.



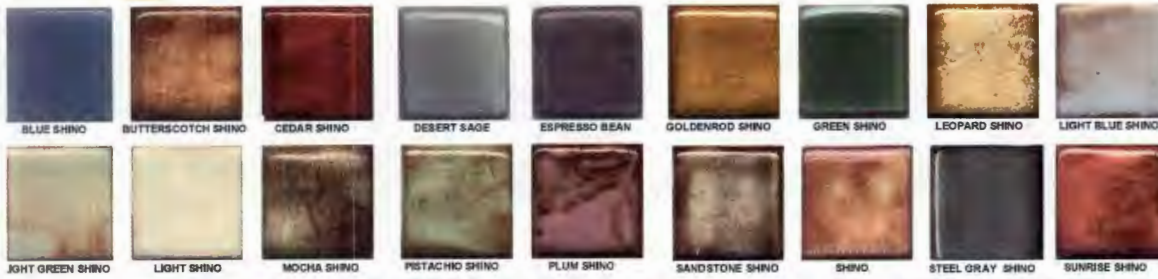
## FANTASY GLAZES

Subtly variegated glazes with a deep, rich surface that look amazing over almost everything.

ANCIENT IRON



# COYOTE CONE SIX GLAZES



## SHINO GLAZES

Our Shino glazes are gorgeous and most unusual, a rare combination of beauty and reliability. The color is sensitive to thickness, breaking brown where thinner. At their best over texture; they're also great over other glazes.



## SATIN GLAZES

Don't want a high gloss? Use our Satin glazes, they have a soft, satiny surface. Available in 12 beautiful colors.



ALABASTER & CORAL SATIN



## MATT GLAZES

IRON MATT

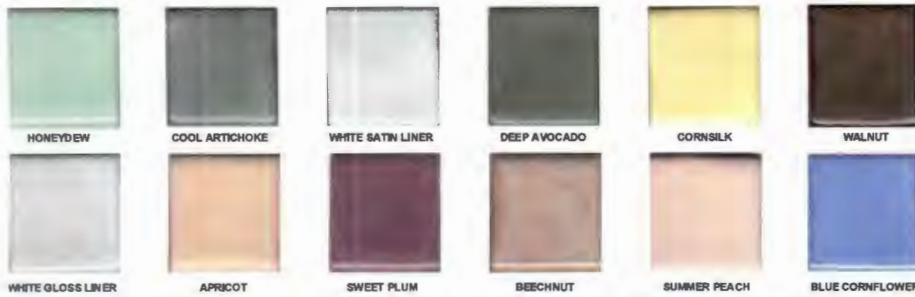
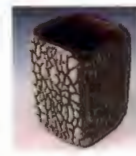
Our Matt glazes give a matt, stony look, great for sculpture.



## CRAWL GLAZES

BLUE CRAWL

Crawl glazes provide an interesting texture for non-food ware. Their unique surface is unlike anything else.



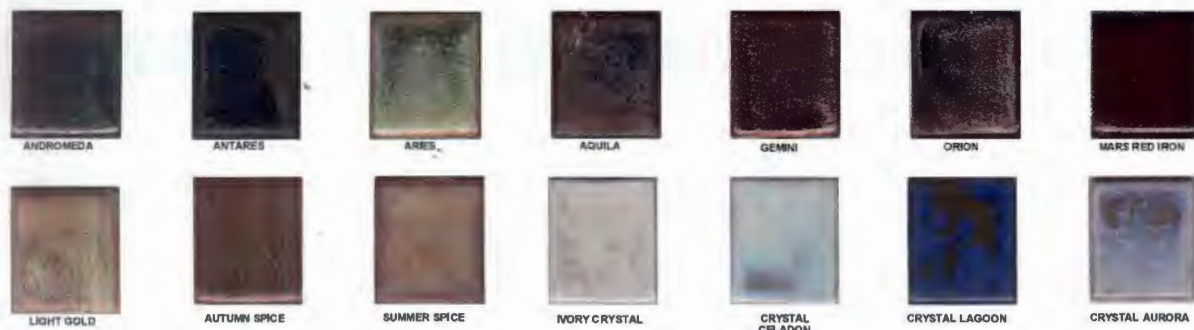
## ENDURO-COLOR GLAZES

Super durable glazes for tough applications like tile and restaurant quality dinnerware. Resistant to acids & alkali, as well as crazing, scratching, and staining. Lightly pigmented to reduce chances of leaching.



## VIBRO-COLOR GLAZES

Vibrant, eye-catching hues with the same scratch and craze resistance as the Enduro-Colors.



## CONSTELLATION

Fire these glazes in a normal firing for one look, or slow cool them for a completely different and awe-some effect.

