

COYOTE CONE 5-6

ELECTRIC GLAZES



Glaze and
Underglaze Catalogue

Ice Blue, and Mocha Shino
Sharon Galbraith



Developed by accomplished potter Martin Butt, Coyote glazes and underglazes are the best commercially produced finishes currently available to ceramic artists working at cone six.

Founded as a pottery school in 1996, Coyote originally sold glaze mostly to former students who lacked the time or materials space to mix their own glazes. Since then, Coyote Clay and Color has grown to become one of the best known manufacturers of cone six glaze.

All Coyote glazes are designed to be used straight out of the jar. Whether you prefer to brush, dip, or pour, every glaze will work equally well whether bought in a pint jar, a gallon pail, or a three-gallon bucket. Even the dry powder, available in 5, 10 or 25 lbs. bags, contains the same ingredients as the pre-mixed glazes, with only the water removed.

Each batch of Coyote glaze and underglaze is test fired before being sold, ensuring that every color meets our exacting standards. New glazes are still tested by students at the original school before being released, so even the newest Coyote colors have hundreds of hours of testing behind them!

Coyote glazes can be brushed (we recommend three coats, alternating the direction of your strokes with each coat), poured, or dipped, and can be fired anywhere between witness cone 5 and witness cone 6.

To buy Coyote glazes and underglazes, call, visit the website, or find a distributor near you.

Go to our website to see pictures of pots using our glazes, glaze application and firing tips and much more.

(866) 344-2250 | coyoteclay.com

COYOTE CLAY & COLOR

Glaze and Underglaze Catalogue

Table of Contents

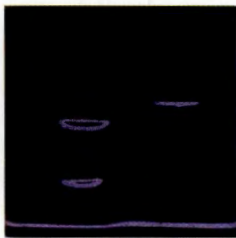
2	—————	Fantasy Glazes
3	—————	Enduro-Color and Vibro-Color Glazes
4	—————	Constellation Glazes
6	—————	Crystalline Slow Cool Glazes
8	—————	Shino Glazes
10	—————	Frank's Colored Celadon and Crawl Glazes
11	—————	Matt and Satin Glazes
12	—————	Archie's Glazes
14	—————	Gloss Glazes
16	—————	Mottled, Copper, and Iron Glazes
18	—————	Texas Two Step Glazes
20	—————	High Fire Underglazes

NEW!

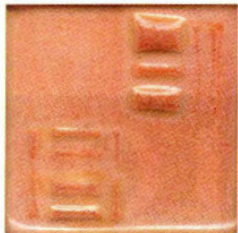
FANTASY GLAZES



ANCIENT IRON
MBG210



AZURE DREAM
MBG211



ENCHANTED SUNSET
MBG212



FAIRY ROSE
MBG213



SORCERER'S STONE
MBG214



UNICORN HORN
MBG215



AMETHYST
MBG216



ANTIQUÉ PEARL
MBG217



DRAGON'S EYE
MBG218



FIREFLY GARDEN
MBG219



HYDRA SCALE
MBG220

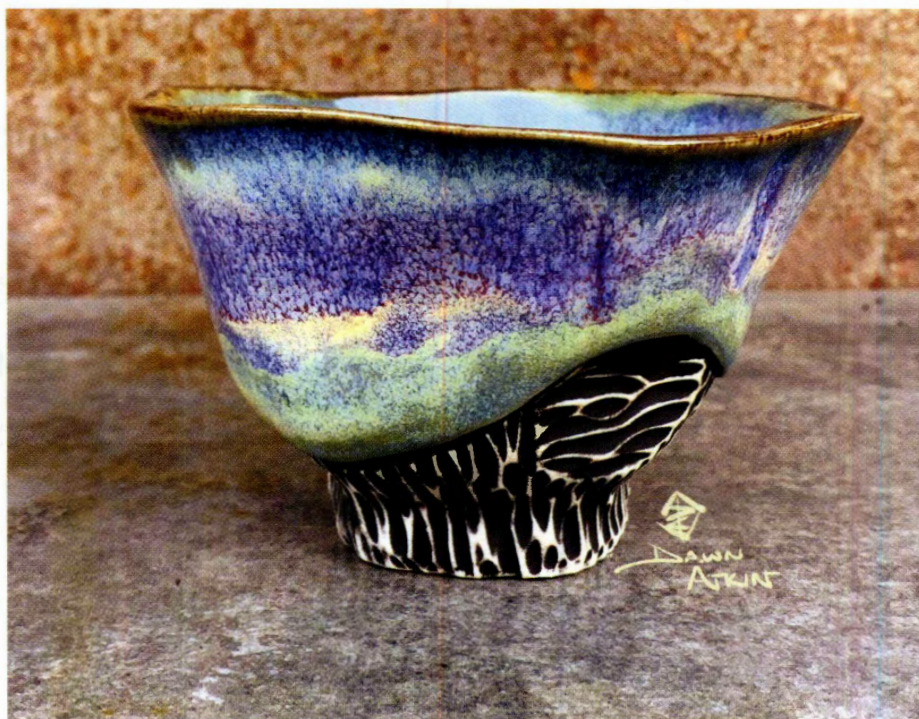


PHOENIX EGG
MBG221



Antique Pearl and Amethyst
look even more dramatic layered.
Artist: Sharon Galbraith

Witness magic when you open a kiln full of Coyote Fantasy Glazes! Full of subtle variations and unusual patterns, these glazes become more enchanting the closer you look. Each color is a different Fantasy to explore.



Hydra Scale, Amethyst, and Firefly Garden layer over Parakeet Yellow to create this stunning combination.

Artist: Dawn Atkin

VIBRO-COLOR

G L A Z E S



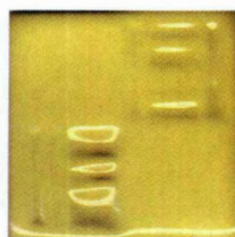
MEDITERRANEAN SEA
MBG200



PASSION RED
MBG201



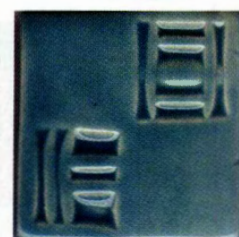
PERIWINKLE
MBG202



SUNDROP
MBG203



TIGER LILY
MBG204



TURQUOISE LAKE
MBG205

Two lines of glazes designed specially to stand up to the rigors of everyday use. The Enduro-Color glazes were formulated to resist scratching, staining, crazing, and any other dish-related abuse. They also have minimal amounts of colorant, and use no cadmium, so they are perfect liner glazes for even the most safety-conscious.

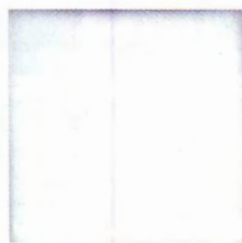
Vibro-Color glazes are made from the same durable base as the Enduro-Colors, but come in brighter, more vivid colors that are less focused on functioning as liner glazes.



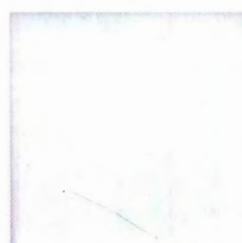
HONEYDEW
MBG180



COOL ARTICHOKE
MBG181



SATIN WHITE LINER
MBG182



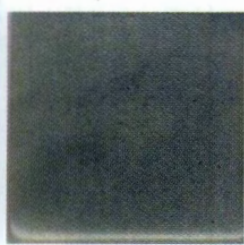
GLOSS WHITE LINER
MBG186



APRICOT
MBG187



SWEET PLUM
MBG188



DEEP AVOCADO
MBG183



CORNSILK
MBG184



WALNUT
MBG185



BEECHNUT
MBG189



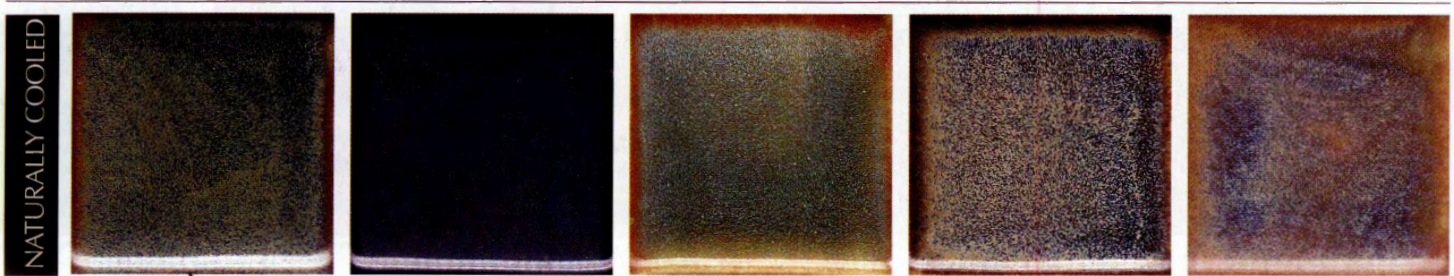
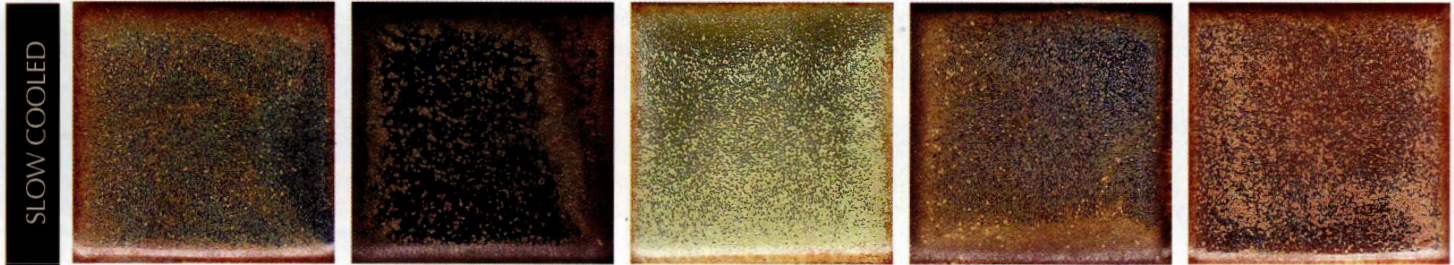
SUMMER PEACH
MBG190



BLUE CORNFLOWER
MBG191

ENDURO-COLOR

L I N E R G L A Z E S



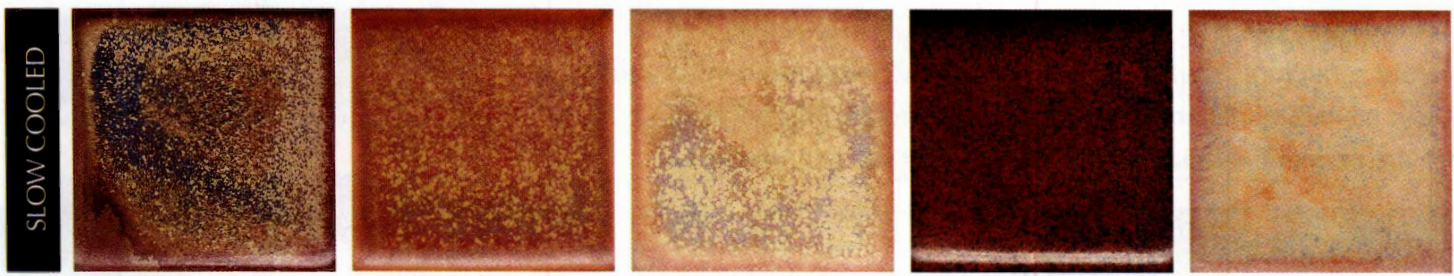
ANDROMEDA
MBG176

ANTARES
MBG175

ARIES
MBG179

AQUILA
MBG177

GEMINI
MBG178



ORION
MBG174

AUTUMN SPICE
MBG170

LIGHT GOLD
MBG172

MARS RED IRON
MBG171

SUMMER SPICE
MBG173

CONSTELLATION

G L A Z E S

Our beautiful Constellations are the first line of glazes designed to shine in both slow-cooled and naturally cooled cone 6 firings.

Constellation Glazes add dazzling variety to your work in any firing. Slow cool them, and the stars come out; dusting the glaze surface with brilliant micro-crystals.



Aquila changes from opalescent blue when naturally cooled to starry gold in a slow cool.

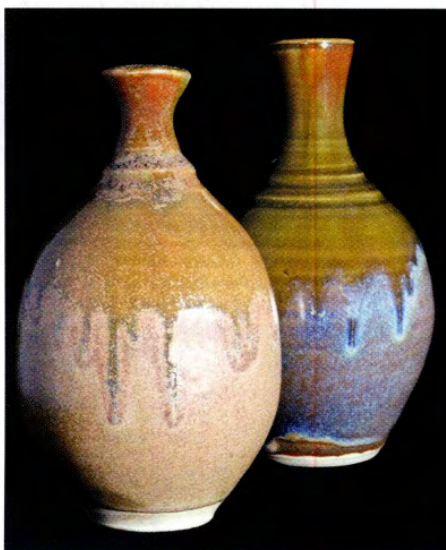
Artist: Diane Marshall

Changing dramatically in different firing conditions, the Constellations are ideal for potters who want to try slow-cooling for the first time, or for anyone who wants to achieve a wide range of effects with a single glaze.



Constellations like Orion can be layered with other glazes like Lapis Satin.

Artist: Hannah Schelb



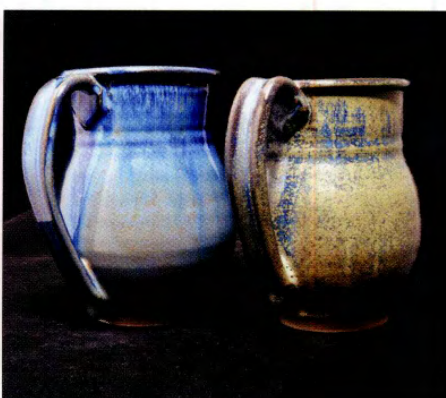
Gemini, Slow and Natural Cool

Artist: Diane Marshall



Aries, Orion, and Andromeda Slow Cooled

Artist: Nancy Fargo

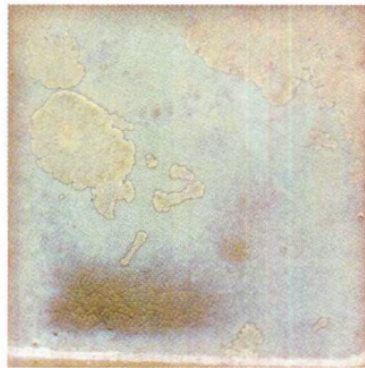


Antares, Natural and Slow Cool

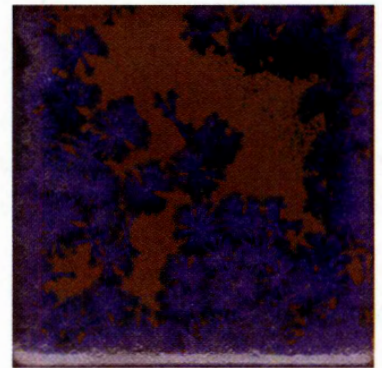
Artist: Diane Marshall



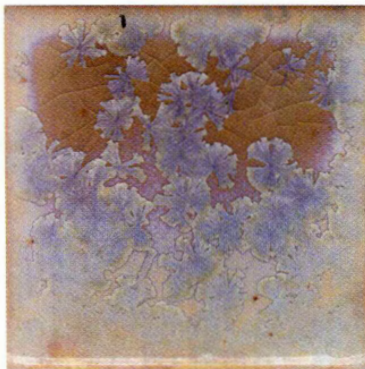
IVORY CRYSTAL
MBG160



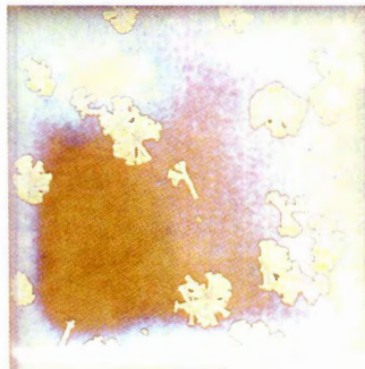
CRYSTAL CELADON
MBG161



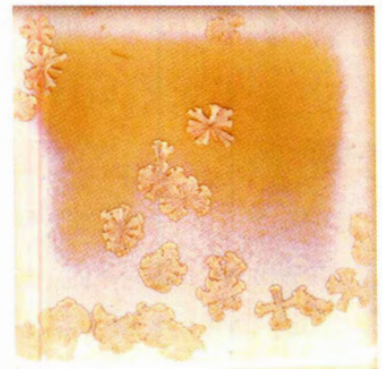
CRYSTAL LAGOON
MBG162



CRYSTAL AURORA
MBG163

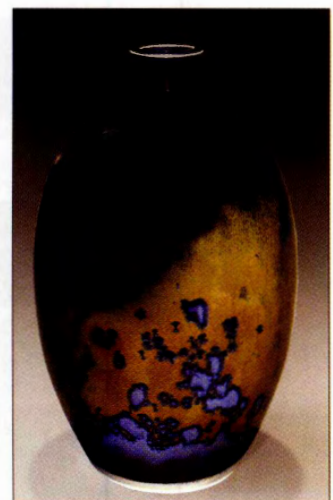
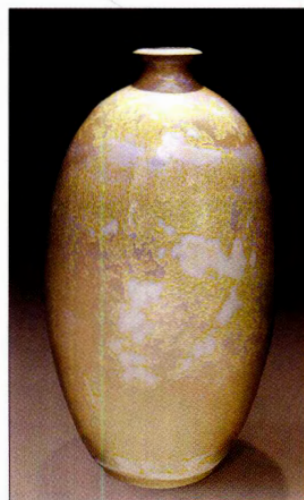


CRYSTAL NEBULA
MBG164

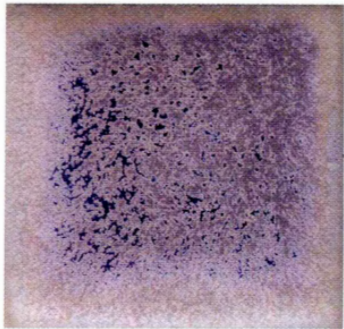


ROSE CRYSTAL
MBG165

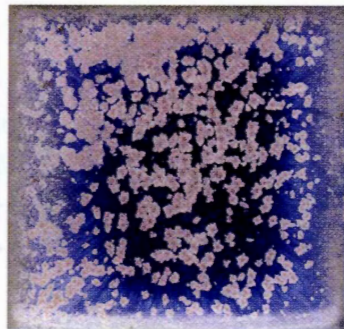
CRYSTALLINE
SLOW
COOL
GLAZES



Ivory Crystal (left) and Crystal Lagoon (right)
Artist: Michael Prokos



Regular



Slow

Blue Purple is an example of a glaze that changes dramatically from natural to slow cooling.



Crystal Aurora
Artist: Michael Prokos

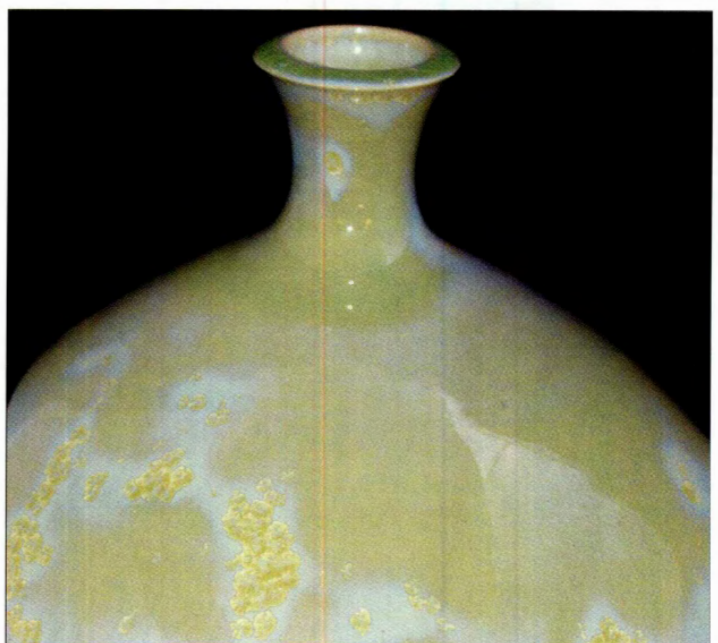
Crystalline glazes are uniquely beautiful, but until now have demanded a dedicated firing cycle that wreaks havoc on other glazes. Now, with Coyote Crystalline Slow Cool glazes, the potter can achieve stunning crystalline effects in the same cooling cycle recommended for our Constellation series.

By entering a series of ramps and holds that lower the temperature slowly, instead of shutting off at the top, the user creates a controlled environment that allows glazes to reach their full potential.

Best of all, slow cooling works for all Coyote Glazes, not just the Crystalline Slow Cool and Constellation series. Try putting some of your favorites in this new firing cycle, and see how they change!

Whichever Coyote Glazes you use, a slow cool can breathe new life into your work.

Visit coyoteclay.com for more information about controlled cooling, including our recommended firing schedule.



Crystal Celadon
Artist: Michael Prokos



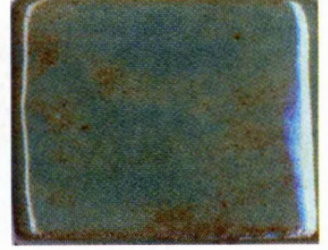
BLUE SHINO
MBG043



BUTTERSCOTCH SHINO
MBG086



CEDAR SHINO
MBG087



DESERT SAGE
MBG061



ESPRESSO BEAN
MBG059



GOLDENROD SHINO
MBG088



GREEN SHINO
MBG044



LEOPARD SHINO
MBG089



LIGHT BLUE SHINO
MBG067



LIGHT GREEN SHINO
MBG068



LIGHT SHINO
MBG045



MOCHA SHINO
MBG090



PISTACHIO SHINO
MBG093



PLUM SHINO
MBG092



SANDSTONE SHINO
MBG094



SHINO
MBG042

SHINO GLAZES



STEEL GRAY SHINO
MBG096



SUNRISE SHINO
MBG097

The Shino family is our most popular series of glazes. A rare combination of beauty and reliability, these 18 colors provide unique finishes for any cone six ware, whether used alone or with other Coyote glazes. These glazes break to brown where thin, creating a wonderfully varied effect on textured surfaces.



Shino looks great over textured surfaces.
Artist: Terri Balden

Shino glazes can be used in combination with other glaze families to create a wide range of special effects. Combining with the Gloss series alone provides possibilities for over 700

Shino combinations, but they also work well with the Archie's series, the Satins, and several other glazes. Simply layering a Shino under or over almost any Coyote glaze produces a unique pattern certain to leave a lasting impression.

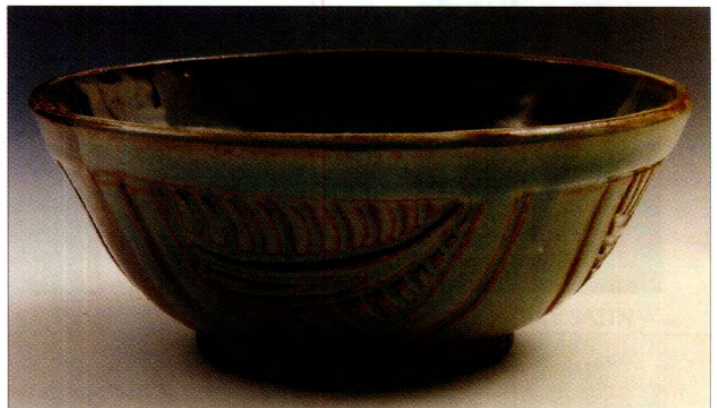
Glazes from this series should be kept warm. When stored below 65°, crystals may form in the glaze. These crystals can be melted and added back to the glaze.

The reliability of Coyote Shino glazes means they are ideal for high-volume or novice potters with limited time or space for testing, while their versatility makes them at home in any studio.

All Shino glazes are suitable for food use except Green Shino.



This dramatic effect is achieved by covering Black with Shino.
Artist: Carol Kaleko



Desert Sage over carving.
Artist: Michael Carson



Goldenrod Shino with JB's Brown and Blue Purple on rim.
Artist: Terri Balden

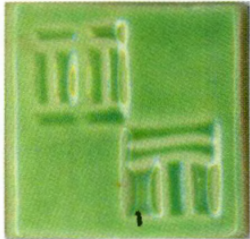
FRANKS COLORED CELADON GLAZES



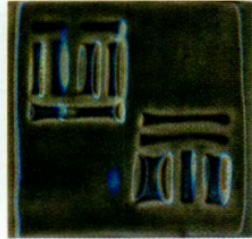
AQUA
MBG102



DUSTY ROSE
MBG098



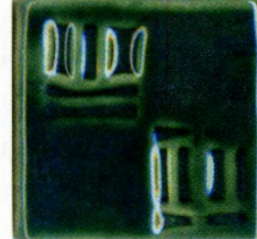
KEY LIME
MBG103



NIGHT SKY
MBG107



PEACH BLUSH
MBG100



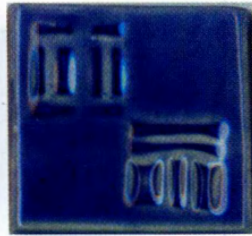
PEACOCK GREEN
MBG104



RAINY DAY
MBG109



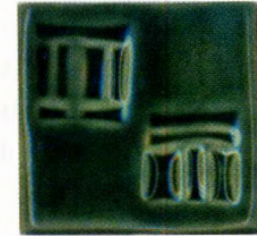
ROOT BEER
MBG105



SAPPHIRE
MBG108



SEDONA SUNSET
MBG099

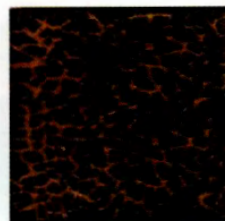


STORMY SEA
MBG101



SUNSHINE YELLOW
MBG106

CRAWL GLAZES



BLACK CRAWL
MBG110



BLUE CRAWL
MBG062



CACTUS CRAWL
MBG063



CHOCOLATE CRAWL
MBG064



CROC CRAWL
MBG065



WHITE CRAWL
MBG073



BLUE MATT
MBG024

MATT GLAZES



CREAMY MATT
MBG029



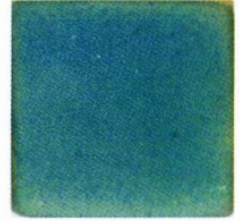
CREAMY W/SPECKS
MBG030



GREEN MATT
MBG047



IRON MATT
MBG049



TURQUOISE MATT
MBG033



ALABASTER SATIN
MBG074



BABY BLUE SATIN
MBG075



CERULEAN SATIN
MBG076



CHARCOAL SATIN
MBG077



CHERRY SATIN
MBG078



LAPIS SATIN
MBG082



CORAL SATIN
MBG079



FOREST SATIN
MBG080



HAZELNUT SATIN
MBG081



LEMON CREAM SATIN
MBG083

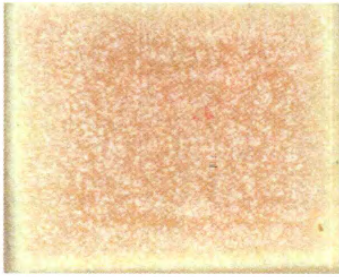
SATIN GLAZES



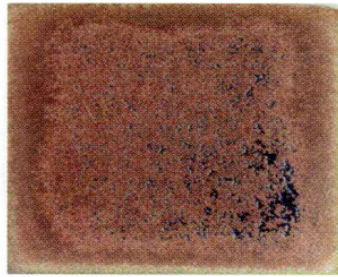
ORCHID SATIN
MBG084



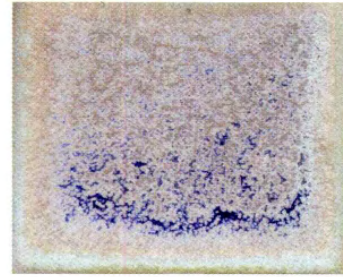
SEAFOAM SATIN
MBG085



ARCHIE'S BASE
MBG034



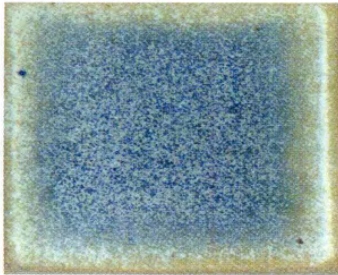
EGGPLANT
MBG056



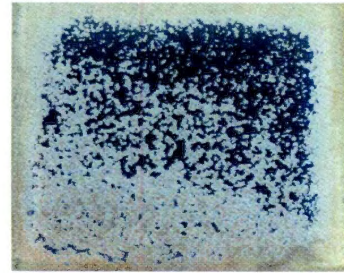
BLUE PURPLE
MBG028



GUN METAL GREEN
MBG026



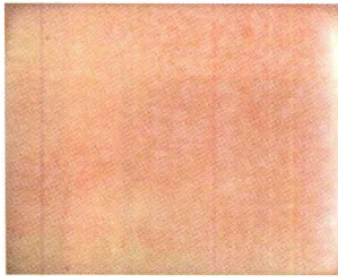
OPAL
MBG055



ICE BLUE
MBG058



RED GOLD
MBG031



RHUBARB
MBG057



FROSTED TOPAZ
MBG240



MAGENTA SKY
MBG241



PAPAYA
MBG242



PARAKEET YELLOW
MBG243

ARCHIE'S

G L A Z E S



Eggplant can vary from a matt purple to a bright glossy green on the same piece.

Artist: Greg Verdon

The Archie's series of glazes are a set of twelve amazing colors designed to create dynamic and spectacular effects in cone 5-6 firings. Inspired by the look of reduction glazes but developed for an electric kiln, Archie's glazes will often produce multiple colors or finishes even with a single application.

Combining the Archie's colors with other Coyote glazes unleashes their potential even further! The interaction of Archie's series glazes with other families allows for dramatic special effects; they can radically change colors when used with other glazes and their activity creates phenomenal patterns.

Archie's glazes may not fit some clay bodies, and can be runny when they are applied thickly. If you are overlapping, only double dip (or brush) the upper 2/3 of the piece. Although they require more care and testing than other Coyote glazes, the Archie's series are an invaluable tool to any potter who wants a glaze that takes advantage of the ease of electric firing, but is exciting to look at.



Archie's series colors will affect other families dramatically. Here, Gun Metal Green interacts with Black to create several new colors.

Artist: Carol Kaleko

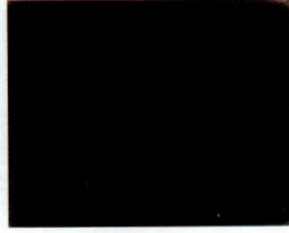


Gun Metal Green can grow beautiful crystal formations.

Artist: Swiss



ALMOST TEAL
MBG001



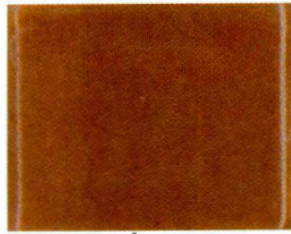
BLACK
MBG002



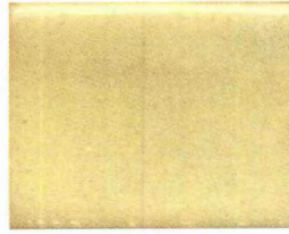
BUTTERCUP
MBG050



CHROME GREEN
MBG005



CINNAMON STICK
MBG006



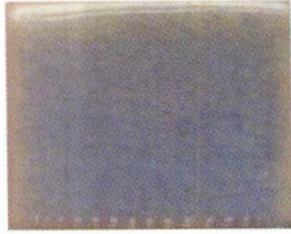
CLEAR
MBG007



COBALT BLUE
MBG008



EGGSHELL
MBG011



LIGHT BLUE
MBG013



MINT
MBG015



OATMEAL
MBG048



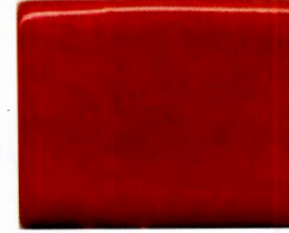
ORANGE
MBG020



PANSY PURPLE
MBG053



PUMPKIN
MBG051



REALLY RED
MBG071



RED
MBG019



RED ORANGE
MBG017



VIOLET
MBG054



WHITE
MBG023



YELLOW ORANGE
MBG025

GLOSS

GLAZES

The Gloss series are Coyote Clay and Color's original line of glazes, perfect for anyone who wants a solid, glossy finish. There are 20 vibrant colors, including our famous "Really Red," a bright, true red achieved in a food safe cone six glaze.



Gloss glazes like Eggshell, Black, Yellow Orange, and Really Red, are solid, bold, and usually won't run. Artist: Adrienne Speer

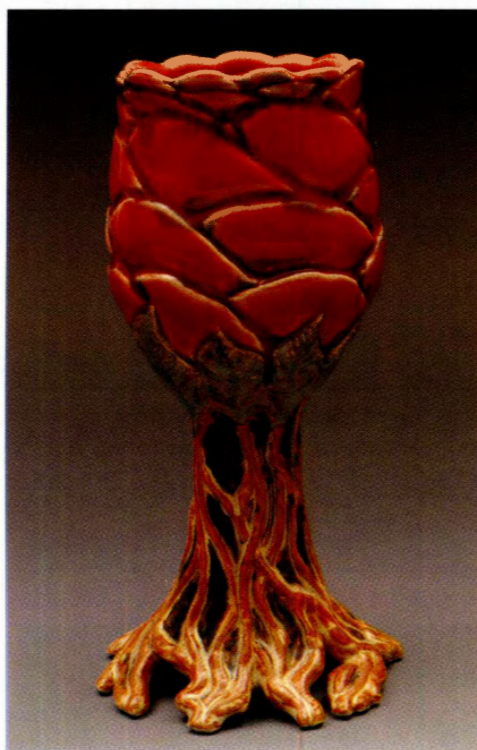
Coyote Gloss glazes don't break or run, providing solid, even coverage. Most of them are opaque, though some are slightly translucent (and Clear is transparent.) All 20 are food safe and easy to apply by brush or dipping.

They're beautiful and easy to use, making them ideal for beginning potters.

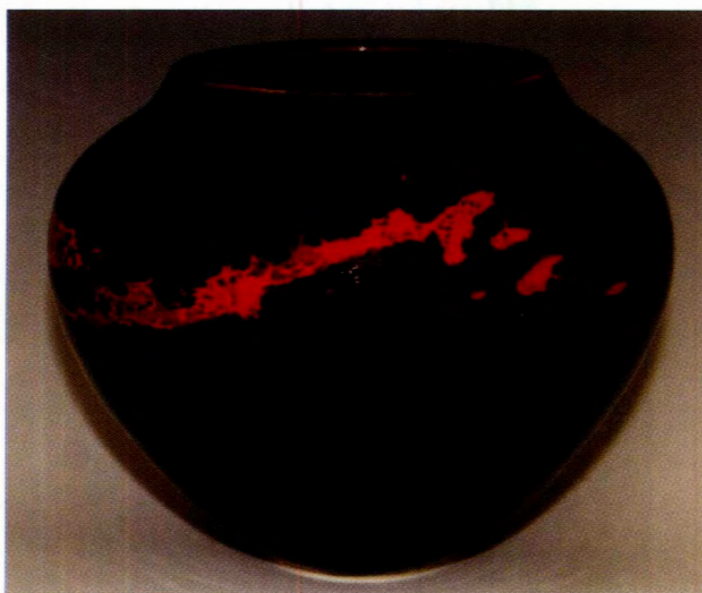
Like most Coyote glazes, the colors in the Gloss family combine well, especially with glazes from other series. Try putting them over or under Shino glazes for beautifully spotted patterns, or layer them with Archie's colors to create new dynamic effects.



Archie's Base pulls Almost Teal into exciting patterns and flashes new colors not present in either glaze by itself. Artist: Martin Butt



Red, Desert Sage and Red Gold, goblet. Artist: Erica Bingam



Layering two gloss glazes, like Really Red and Black, can result in spectacular effects, especially when combined with other techniques like using wax resist. Artist: Marc McMillan

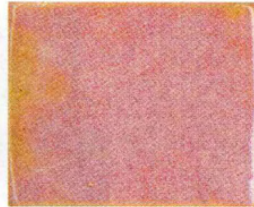
MOTTLED GLAZES



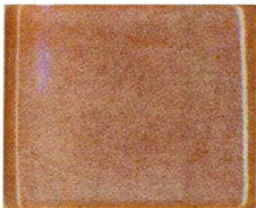
CACTUS GREEN
MBG004



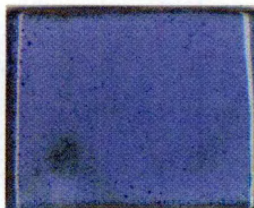
CROC BLUE
MBG009



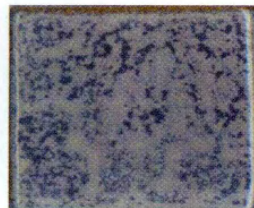
FIRE OPAL
MBG012



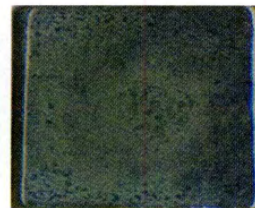
JB'S BROWN
MBG066



MOTTLED BLUE
MBG016



PAM'S BLUE
MBG070



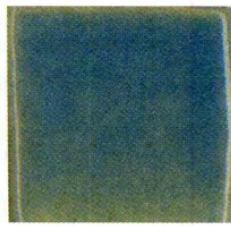
PAM'S GREEN
MBG038



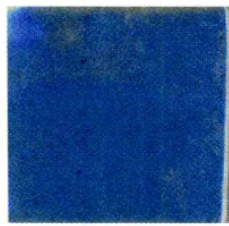
SUNSET PINK
MBG021



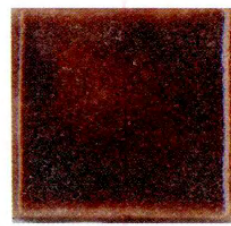
COPPER BLUE
MBG035



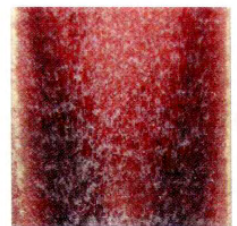
CRAZED COPPER
MBG036



OASIS
MBG037



OXBLOOD
MBG131



SNOWY PLUM
MBG130

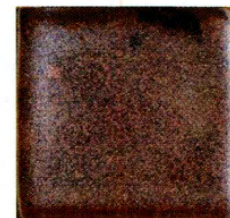
COPPER & IRON GLAZES



SATURATED IRON
MBG040



TOSHI BROWN
MBG027



BRONZE TEMMOKU
MBG120



RUST BROWN
MBG032

The Mottled series is one of Coyote's most user friendly glaze lines. These stunning glazes provide a deep and interesting surface that lends itself equally well to both functional and sculptural ceramics. Available in eight food safe colors, this family sits comfortably at the intersection of ease and beauty.

The variegated colors of the Mottled line bring any work to life, and they can be layered with other glazes to create even more effects. These glazes are an integral part of some of our favorite combinations.



Pam's Green and Archie's Base are two of Coyote's most popular glazes, in part because of how they combine.
Artist: Sue Bang

Coyote Copper glazes range from beautiful translucent blues to stunning copper reds. Copper Blue and Crazed Copper are similar to Frank's Colored Celadons, great for delicately decorated pieces, while Oasis is another favorite of potters who like to combine glazes. Oxblood and Snowy Plum

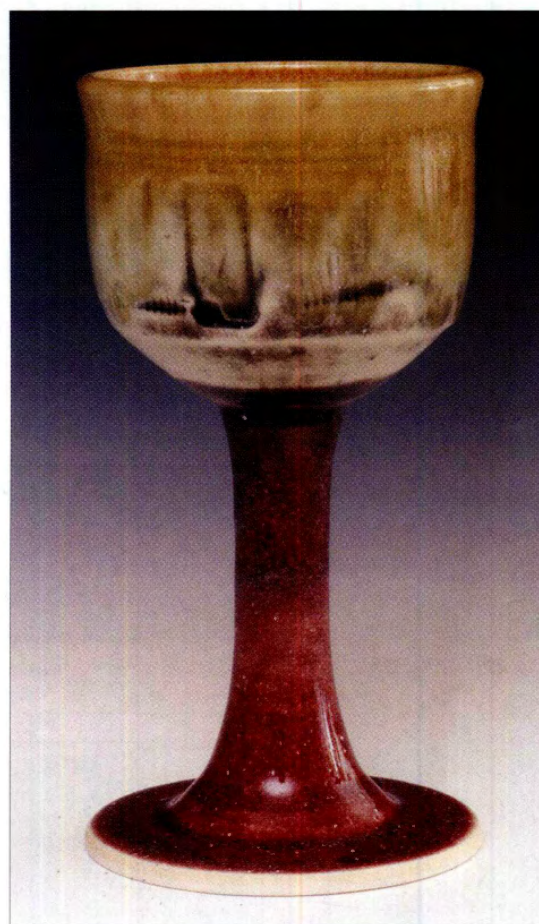
are true copper reds, achievable in cone six electric firing. These two glazes contain an ingredient that makes them reduce, producing rich purplish hues normally only attainable through gas firings.



Bronze Temmoku looks great combined with Satin colors.
Artist: Robbie Hopwood

The Iron glazes are perfect for potters who prefer a more traditional finish. Bronze Temmoku sparkles on white clay, but produces a look similar to gas fired temmokus when applied to darker bodies.

All of the Copper and Iron glazes are food safe except Bronze Temmoku.



Oxblood contains an agent that causes reduction.
Artist: Alan Mendoza

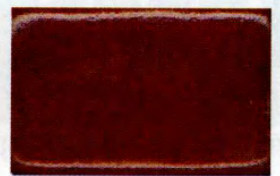
STEP 1



LICORICE
MBG140



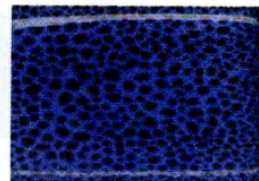
COFFEE BEAN
MBG141



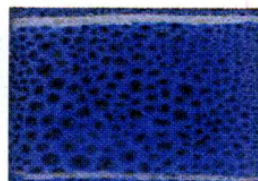
BRICK RED
MBG142



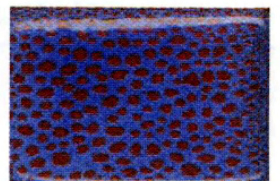
BLUE MOON
MBG150



MBG150 OVER MBG140



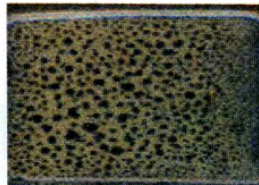
MBG150 OVER MBG141



MBG150 OVER MBG142



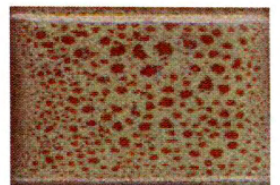
BIRCH
MBG151



MBG151 OVER MBG140



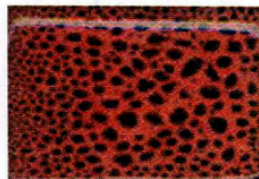
MBG151 OVER MBG141



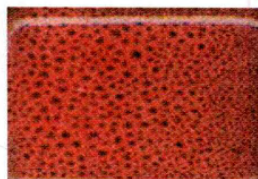
MBG151 OVER MBG142



TEXAS ROSE
MBG152



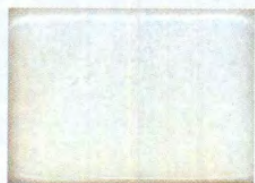
MBG152 OVER MBG140



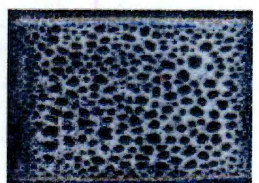
MBG152 OVER MBG141



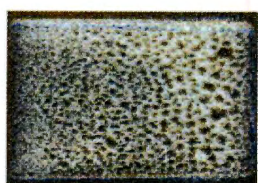
MBG152 OVER MBG142



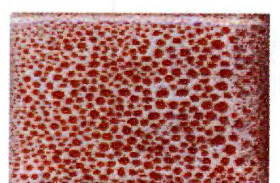
MARSHMALLOW
MBG153



MBG153 OVER MBG140



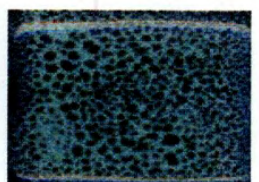
MBG153 OVER MBG141



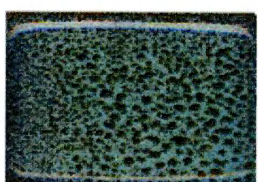
MBG153 OVER MBG142



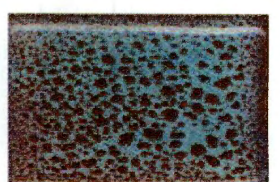
SEA MIST
MBG154



MBG154 OVER MBG140



MBG154 OVER MBG141



MBG154 OVER MBG142

STEP 2

TEXAS 2-STEP GLAZES

Coyote Texas Two-Step oilspot style glazes are unlike anything else available today. When any of the eight glazes are used by themselves, they produce rich, natural colors which will complement any type of ware. Combine them, however, and they will erupt into a beautiful reticulated pattern, sure to stun.

The undercoats Licorice, Coffee Bean, and Brick Red are deep, natural colors, wonderfully offset by any of the five bright overcoats needed to form the oilspot patterns. All eight colors are food safe, both alone and in combination.



Blue Moon, Texas Rose and Marshmallow over Licorice
Artist: Elice Taylor



Artist: Sharon Galbraith



Coffee Bean, Birch, Sea Mist and Mottled Blue
Artist: Mary Beth Pair



Coffee Bean, Birch, Sea Mist and Mottled Blue
Artist: Mary Beth Pair



BLACK
MBUG001



BLUE GREEN
MBUG002



BLUE PANSY
MBUG020



BROWN
MBUG003



BUTTERCUP
MBUG021



CACTUS GREEN
MBUG004



CINNAMON
MBUG005



DARK BROWN
MBUG006



LAVENDER
MBUG007



LIGHT BLUE
MBUG008



MAZERINE BLUE
MBUG009



ORANGE
MBUG010



PINK
MBUG011



POWDER BLUE
MBUG022



REALLY RED
MBUG025



RED
MBUG013



RED ORANGE
MBUG014



ROYAL BLUE
MBUG023



SAGE GREEN
MBUG015



SKY BLUE
MBUG016



TANGERINE
MBUG024



VIOLET
MBUG026



WHITE
MBUG017



YELLOW
MBUG018

HIGHFIRE UNDER GLAZES



YELLOW ORANGE
MBUG019



SEA GRASS
MBUG031



OLIVE
MBUG030



HUNTER GREEN
MBUG029



EVERGREEN
MBUG028



BURGUNDY
MBUG027

Coyote High Fire Underglazes are designed for use at cone six, and will work up to cone ten. These 30 colors provide an astounding palette for designs on your cone six ware. Many underglazes will burn out at cone five, but Coyote underglazes are designed with higher temperatures in mind. Even bright reds and yellows will stay true in midrange firings.

The underglazes can be applied by nearly any method, and provide bold solid colors. They will not run, allowing them to be used like paints for sophisticated designs.

Underglazes are typically covered by a clear glaze, but may be left uncovered for a less glossy surface.

All Coyote underglazes are food safe when covered with Coyote Clear or one of Frank's Colored Celadons and fired to cone six. They can also be used under other Coyote glazes to add accents.



Coyote Underglazes can be mixed for a wide palette of colors.
Artist: Susan Martin Serra. Detail of "Marsh Mural."



Silk screening with the underglazes can produce spectacularly detailed designs.
Artist: Sylvia Hyman



COYOTE CLAY & COLOR

(866) 344-2250 | coyoteclay.com