

# Celadon

 Cone 5/6

**AMACO**  
EST. 1919  
**brent**

# Celadon

Tiles are AMACO 11-M A-Mix White Stoneware Clay. Fired to Cone 5.

Category: Mid-High Fire Glaze  
Firing Temperature: Cone 5 - Cone 6



\*AP glazes safe for Spray Application



C-11  
Mixing Clear



C-10  
Snow



C-23  
Ice



C-40  
Aqua



C-19  
Glacier



C-22  
Fog



C-47  
Jade



C-41  
Pear



C-43  
Wasabi



C-49  
Rainforest



C-27  
Storm



C-20  
Cobalt



C-25  
Downpour



C-29  
Deep Sea



C-60  
Marigold



C-50  
Cherry Blossom



C-65  
Tangelo



C-55  
Poppy



C-53  
Weeping Plum



C-56  
Lavender



C-21  
Sky



C-32  
Ochre



C-3  
Smoke



C-36  
Iron



C-5  
Charcoal



C-1  
Obsidian

## TEXTURE-TASTIC!

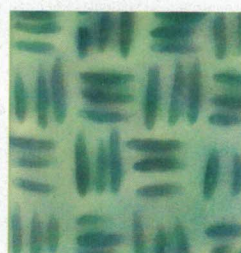
AMACO Celadons pool and break over any kind of texture, creating beautiful depth and variety in your work.



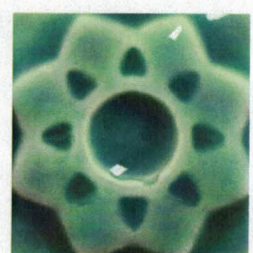
Slip Trailing



Water Etching



Carving



Relief

Head to [www.youtube.com/amacobrent](http://www.youtube.com/amacobrent) and check out our "Carving Clay" video to see the Celadons in action!

# the CELADON ADVANTAGE

- Great for highlighting texture
- Stiff - won't run when fired
- Bold color at Cone 5/6
- Translucent, glossy finish
- Great for layering with Potter's Choice line
- All colors available in 16oz for brushing
- Six colors available in 1gal for brushing
- Eighteen colors available in 10lb dry buckets for dipping

## FAQ

**Apply to...** Cone 04 Bisqueware

**Fire to...** Cone 5 - Cone 6

**Note:** Celadons are formulated to be most vibrant at Cone 5. Most celadons are stable up to Cone 10 but do experience color shifts at higher temperatures.

**Food safe?** Yes. All Celadon glazes hold a food safety status.

## MIX IT UP

AMACO Celadons are fully mixable - perfect for creating your own palette. Mix glazes with C-11 Mixing Clear to soften or combine colors to create something entirely new!

Head to [www.youtube.com/amacobrent](http://www.youtube.com/amacobrent) and check out our "Volumetric Mixing" video to see how we mix color!

### Soften

C-27 Storm + C-11 Mixing Clear



100% C-27  
Storm



75% C-27  
25% C-11



50% C-27  
50% C-11



25% C-27  
75% C-11



10% C-27  
90% C-11

### Customize

C-53 Weeping Plum +  
C-60 Marigold



100% C-53  
Weeping Plum



75% C-53  
25% C-60



50% C-53  
50% C-60



25% C-53  
75% C-60



100% C-60  
Marigold

### Create

C-43 Wasabi + C-21 Sky



100% C-43  
Wasabi



75% C-43  
25% C-21



50% C-43  
50% C-21



25% C-43  
75% C-21



100% C-21  
Sky

# LAYERING

Head to [www.amaco.com/layering](http://www.amaco.com/layering) for specs and to check out tons of other layering combinations!

## Potter's Choice over Celadons



PC-36 Ironstone  
over C-1 Obsidian



PC-55 Deep Firebrick  
over C-41 Pear



PC-35 Oil Spill over  
C-47 Rainforest



PC-21 Arctic Blue over  
C-53 Weeping Plum

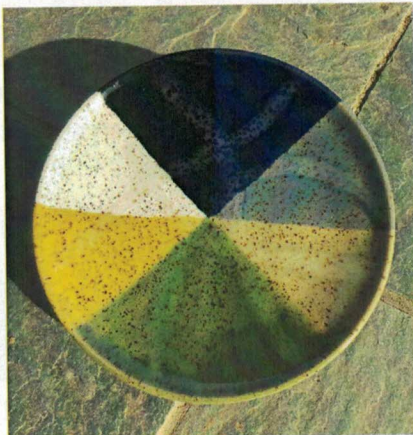
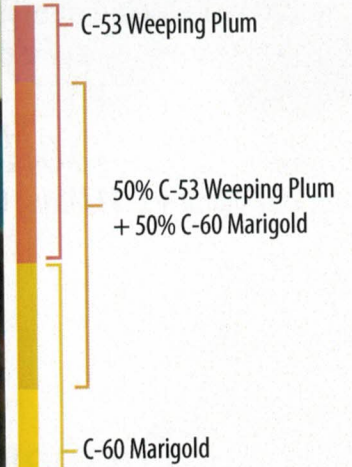
## get INSPIRED

Check out these artists using AMACO Celadons.



*Pops of Color*  
Brittany Posten

*Over Velvets*  
Kathy Skaggs




*On Speckled Clay*  
Bethany Sheesley



*Marbling*  
Danielle Khalife

*Mixing / Layering*  
Lorrie Wolaver

want more?

 Visit our 5/6 Exchange page at [Facebook.com/groups/potterschoiceex](https://www.facebook.com/groups/potterschoiceex) to find inspiration, share results, and discuss with other AMACO customers!

Questions? Call (800) 374-1600