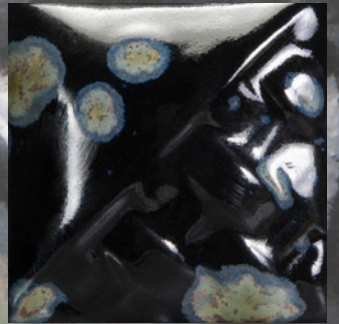




STONEWARE COMBO

SW-181 Night Moth

Cone 6



Technique was achieved by brushing on two (2) layers of base glaze. Then apply two (2) layers of top glaze (SW-181 Night Moth), letting glazes dry between coats.

	 SW-107 Dunes under SW-181 Night Moth		 SW-110 Oyster under SW-181 Night Moth		 SW-113 Speckled Plum under SW-181 Night Moth
	 SW-117 Honeycomb under SW-181 Night Moth		 SW-145 Tea Dust under SW-181 Night Moth		 SW-155 Winter Wood under SW-181 Night Moth
	 SW-169 Frosted Lemon under SW-181 Night Moth		 SW-170 Blue Hydrangea under SW-181 Night Moth		 SW-171 Enchanted Forest under SW-181 Night Moth
	 SW-176 Sandstone under SW-181 Night Moth		 SW-177 Raspberry Mist under SW-181 Night Moth		 SW-252 Blue Opal under SW-181 Night Moth

Vases shown are fired to Cone 6 on White Stoneware body.



MaycoColors.com

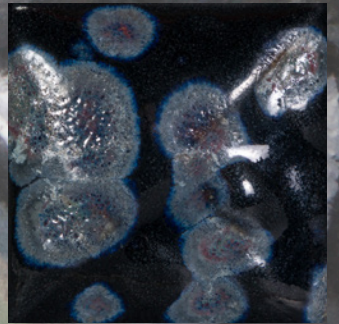




STONEWARE COMBO

SW-181 Night Moth

Cone 10 reduction



Technique was achieved by brushing on two (2) layers of base glaze. Then apply two (2) layers of top glaze (SW-181 Night Moth), letting glazes dry between coats.

	 SW-107 Dunes under SW-181 Night Moth		 SW-110 Oyster under SW-181 Night Moth		 SW-113 Speckled Plum under SW-181 Night Moth
	 SW-117 Honeycomb under SW-181 Night Moth		 SW-145 Tea Dust under SW-181 Night Moth		 SW-155 Winter Wood under SW-181 Night Moth
	 SW-169 Frosted Lemon under SW-181 Night Moth		 SW-170 Blue Hydrangea under SW-181 Night Moth		 SW-171 Enchanted Forest under SW-181 Night Moth
	 SW-176 Sandstone under SW-181 Night Moth		 SW-177 Raspberry Mist under SW-181 Night Moth		 SW-252 Blue Opal under SW-181 Night Moth

Vases shown are fired to Cone 10 reduction on White Stoneware body.



MaycoColors.com

