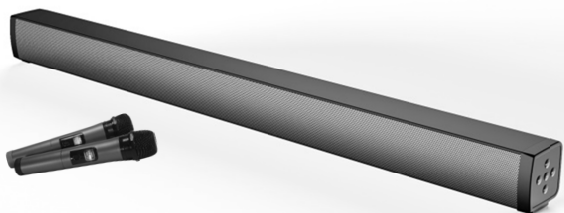


USER MANUAL

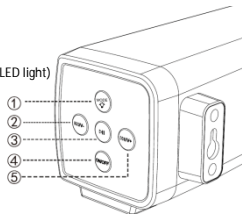


STARBAR

SOUNDBAR – BLUETOOTH SPEAKER – KARAOKE MACHINE

SIDE PANEL

- ① Audio Input Mode Switch & LED Light On/Off (press & hold for LED light)
- ② Back Track & Volume Down (press & hold for volume down)
- ③ Play & Pause
- ④ Power On/Off
- ⑤ Next Track & Volume Increase (press & hold for volume increase)



Instructions

PLACEMENT

Place flat on your TV cabinet or other furniture in front of TV. Alternatively can be wall mounted using screw holes on rear panel (screws/fixings not supplied)

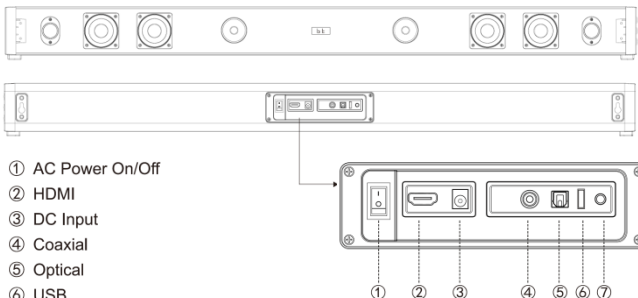
SWITCHING ON

Connect power adaptor to mains and set AC Power switch on rear panel to ON to put device in Standby mode. Press POWER ON button on remote or side panel to Power On the device

EQ MODES

Press the EQ button on remote to select your desired music sound effect mode.
NORMAL (NO) / POP (PO) / ROCK (RO) / CLASSIC (CL) / JAZZ (JA) / COUNTRY (CO)

Product Overview



- ① AC Power On/Off
- ② HDMI
- ③ DC Input
- ④ Coaxial
- ⑤ Optical
- ⑥ USB
- ⑦ AUX

CONNECTING YOUR TV & MODE SELECT

There are multiple Input Modes to choose from when connecting your TV, please check the features/audio outputs of your TV carefully and connect to the Soundbar using your required method. If connecting with a cable please use the AUDIO or SOUND settings on your TV to ensure you have selected the correct Audio Output method for the cable used, and press the MODE button on the Remote or Side Panel of the Soundbar to select correct input mode. For best results we recommend using the included OPTICAL cable and using OPTICAL Mode on TV/Soundbar

BLUETOOTH MODE. Connect soundbar wirelessly by using bluetooth settings on your bluetooth enabled TV or smart device... search for device STARBAR.... once connected you will hear audio confirmation. **IMPORTANT. Only one device can be connected at any one time, if you cannot find STARBAR when searching for bluetooth devices, please ensure any other devices are disconnected and try again**

HDMI (ARC) MODE. Connect to TV using HDMI Cable (not included) & select HDMI output on your TV settings

OPTICAL MODE. Connect to TV using included OPTICAL Cable, & select OPTICAL output on your TV settings

COAXIAL MODE. Connect to TV using COAXIAL Cable (not included), & select COAXIAL output on your TV settings

AUX-IN MODE. Connect to TV or other device (such as Laptop, MP3 Player etc) using included 3.5mm jack cable & select AUX or LINE output on your TV/Device settings. AUX-IN mode should automatically be selected by soundbar when aux cable is inserted into AUX-IN socket on rear panel of soundbar

USB MODE. Additionally soundbar can play digital MP3 music files via USB stick. Insert your USB device to the USB slot on the rear panel and music should start playing automatically. (Does not support MP3-G or Video files)

Need Help Setting up? Contact our friendly UK based support team for assistance

Need Help Setting up?

Contact our friendly UK based support team for assistance....

Mr Entertainer Karaoke

✉ info@mrentertainer.co.uk
Monday-Friday, 10am-5pm



Chat to us via Whatsapp, scan qr code on your smart phone, or message 07536 915468



wa.link3u99k6

Please also visit our troubleshooting page for handy setup tips and quick fixes to common problems... www.mrentertainer.co.uk/pages/troubleshooting

SPECIFICATIONS	
Model Name: STARBAR	Model Number: D16
Power: 60W RMS / 600W PEAK	Microphone Frequency: UHF
Wireless Version: BT5.0	Colour: Black
Wireless Connection Distance: Approx 10m Max	Material: PC/ABS
Frequency Response: 40Khz - 20Khz	Soundbar Dimensions: 94 x 8.5 x 7.4cm
S/N ratio: 85db	Soundbar Weight: 2.5kg

Distributed By...

Digitop Ltd T/A Mr Entertainer
Unit 11A Bridge Trade Park
Bridge Road
Camberley
Surrey
GU15 2QR
United Kingdom



DIGITOP

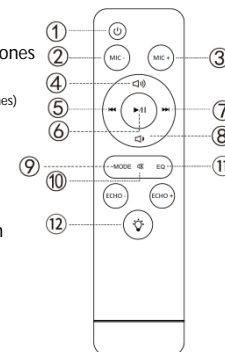
Packing List

- 1 x Soundbar
- 1 x Remote Control
- 1 x AUX Cable
- 1 x Optical Cable
- 1 x Power Supply

- 1 x User Manual
- 2 x UHF Handheld Microphones
- 2 x AAA Batteries (for remote)
- 4 x AA Batteries (for microphones)

Remote Control

- ① Power On/Off
- ② Mic Volume Down
- ③ Mic Volume Up
- ④ Master Volume Up
- ⑤ Skip Track Previous
- ⑥ Play/Pause
- ⑦ Skip Track Next
- ⑧ Master Volume Down
- ⑨ Mode Select
- ⑩ Mute
- ⑪ EQ
- ⑫ LED Light On/Off



PLAYING KARAOKE CONTENT

Once your Soundbar is connected & working, you just need to find some karaoke tunes to play & you're ready to sing, here are some suggestions to get you started....

YOUTUBE. Most modern TV's will have YouTube built in, which is a great source for Free Karaoke Videos. Search YouTube for your favourite songs or artists but remember to include the word KARAOKE

SCREEN CASTING/SHARING. Some modern TV's have a screen casting/sharing option for your smart phone. If so this is a great solution as it means you use your smartphone to download one of the many fantastic Karaoke Apps available on the Google & Apple app stores and cast to your TV

PLAY VIDEO FILES VIA USB. Most modern TV's will have a USB Port capable of playing video files such as MP4, perfect for playing your existing karaoke collection on your TV. You can also visit our website on your computer to search/browse for your favourite songs to buy and download instantly in MP4 format, which can then be copied to USB stick for playback on your TV. For more info visit our download store. www.mrentertainer.co.uk

KARAOKE PLAYER & DISCS. Connect a Karaoke Player to your TV and play Karaoke Discs then sing along using the soundbar. Karaoke Player & Disc packages can be purchased from our webshop, www.mrentertainer.co.uk

LAPTOP. Connect a laptop to your TV & use our website to stream karaoke videos for free... www.mrentertainer.co.uk

RECYCLING ELECTRICAL PRODUCTS
You should now recycle your waste electrical goods and in doing so help the environment.
This symbol means an electrical product should not be disposed of with normal household waste. Please ensure it is taken to a suitable facility for disposal when finished with.
IMPORTANT: Please read all instructions carefully before use and keep for future reference

CAUTION
Risk of electric shock.
Do not open
Read all instructions carefully before use and keep for future reference
When servicing, use only identical replacement parts

ATTENTION
Do not touch
Do not touch

WARRANTY
All products and parts come with a standard 12 month warranty from date of purchase. If you have any problems please contact your retailer for help.

SAFETY INFORMATION

Read these instructions carefully and heed all warnings
Do not clean the apparatus near or with water. Clean only with a dry cloth.
Do not block any ventilation openings. Install in accordance with the manufacturer's instructions.
Do not use near any heat sources such as radiators, stoves, or other apparatus (including amplifiers) that produce heat.
Protect the power cord from being walked on or pinched particularly at plugs and the point where they exit from the apparatus.
Only use attachments/accessories specified by the manufacturer
Unplug this apparatus during electrical storms or when unused for long periods of time.
Refer all servicing to qualified service personnel. Servicing is required when the apparatus has been damaged in any way, such as power-supply cord or plug is damaged, liquid has been spilled or objects have fallen into the apparatus, the apparatus has been exposed to rain or moisture, does not operate normally or has been dropped.
No naked flame sources, such as lit candles, should be placed on the apparatus.
Dispose of used electrical products and batteries safely according to your local authority and regulations.