

GROOVEBOX

Bluetooth CD+G Karaoke System

Instruction Manual
Manuel d'instructions
Manual de Instrucciones

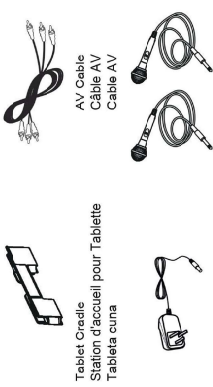
For more information see www.mrentertainer.co.uk
Pour plus d'informations, veuillez consulter le site www.mrentertainer.co.uk
Para más información, visite www.mrentertainer.co.uk



info@mrentertainer.co.uk
Digitop Ltd T/A Mr. Entertainer
Unit 11A Bridge Trade Park, Bridge Road
Camberley, Surrey, GU15 2QR, UK
WhatsApp Support: 07536 915468

1 Check the Contents

Vérifier le contenu
Compruebe el contenido

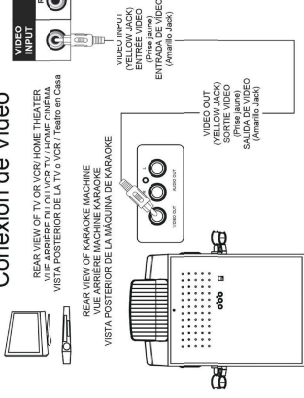


Pre recorded Karaoke CD+G Disc
Disco CD + G pregrabada
Disco CD + G-grabado Pre

Instruction Manual
Manuel d'instruction
Manual de Instrucciones

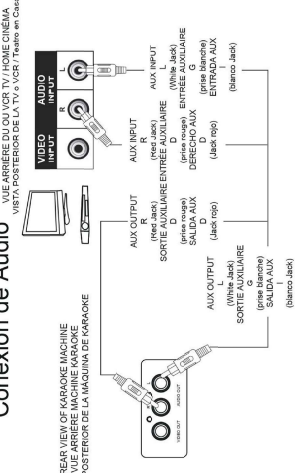
6 Video Connection

Connexion Vidéo
Conexión de Vídeo



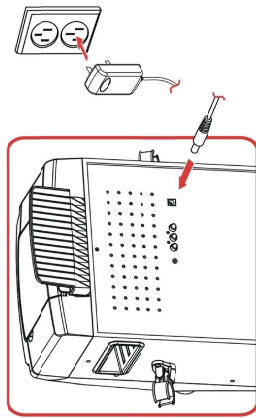
7 Audio Connection

Connexion Audio
Conexión de Audio



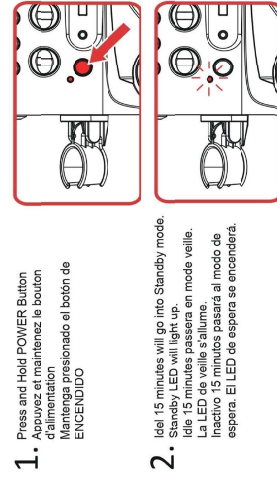
2 Connect to the mains

Raccorder au secteur
Conectar a la red



3 Turn ON the Power

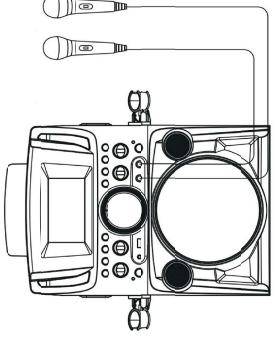
Allumer l'Appreil
Conectar la alimentación



- Press and Hold POWER Button
d'alimentation
Mantenga presionado el botón de ENCENDIDO
- Idle 15 minutes will go into Standby mode.
Idle 15 minutes passera en mode veille.
La LED de veille s'allume.
Inactivo 15 minutos pasará al modo de espera. El LED de espera se encenderá.

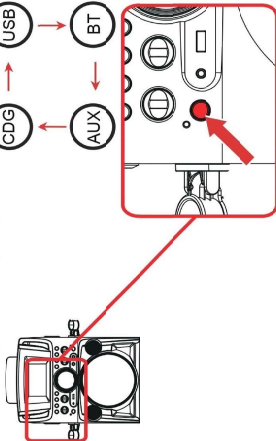
8 Setting up Your Microphone

Configuration de votre microphone
Configuración de su micrófono



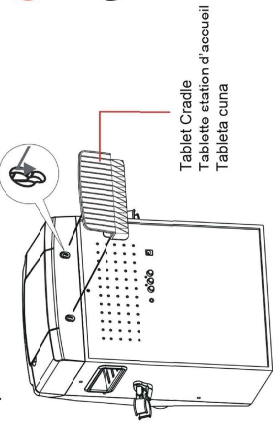
4 FUNCTION Button

FUNCTION Du Bouton
Botón de FUNCIÓN



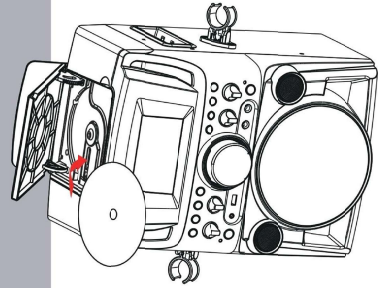
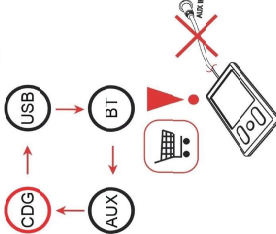
5 Tablet Operation

Opération Tablette
Operación de la Tableta

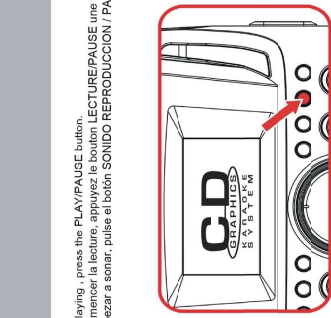
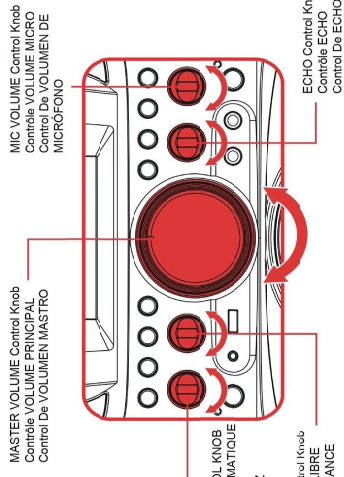


9 Insert a CDG

Insérez un CDG
Insertar un CDG

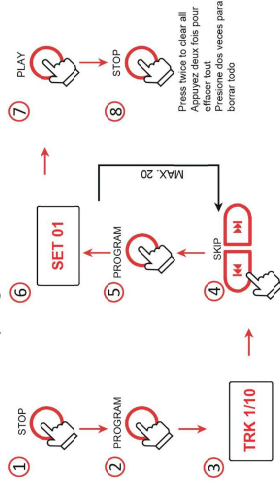


To start playing, press the PLAY/PAUSE button.
Pour commencer la lecture, appuyez le bouton LECTURE/PAUSE une fois.
Para empezar a sonar, pulse el botón SONIDO REPRODUCCION / PAUSA.



10 PROGRAM Track

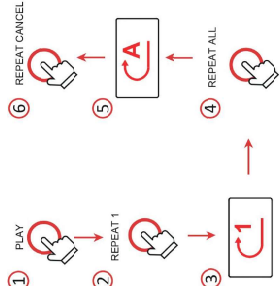
Piste du programme
Pista del programa



Press twice to enter all
Appuyez deux fois pour
effacer tout
Presione dos veces para
borrar todo

11 REPEAT Function

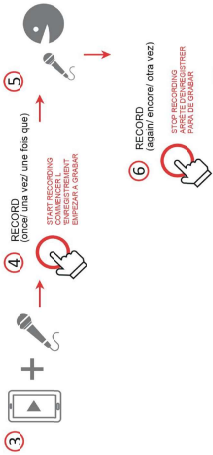
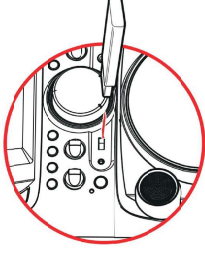
Fonction REPEAT
Función REPEAT



15 RECORD Function on USB

Fonction RECORD sur USB
Función RECORD en USB

1 Insert CD or select BT mode
2 Plus a USB flash drive to USB socket
Branchez une clé USB à la prise USB.
Connecte una unidad flash USB al
conector USB.

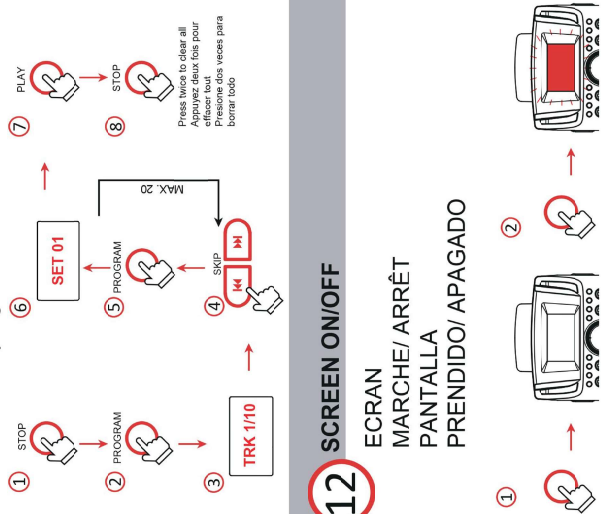


START RECORDING
COMMENCER
EMPEZAR A GRABAR

STOP RECORDING
ARRÊTER
PARAR DE GRABAR

12 SCREEN ON/OFF

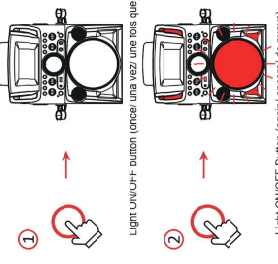
ECRAN
MARCHE/ ARRÊT
PANTALLA
PRENDIDO/ APAGADO



SCREEN ON/OFF (once/ una vez/ una sola vez)

13 LIGHT ON/OFF Button

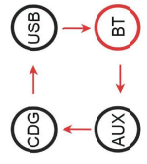
Bouton ON / OFF de lumière
Luz botón ON / OFF



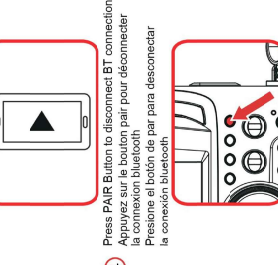
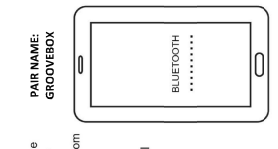
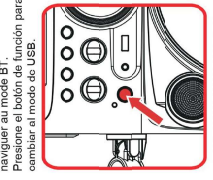
Light ON/OFF button (once/ una vez/ una sola vez)

16 Bluetooth Connection

Connexion Bluetooth
Conexión de Bluetooth

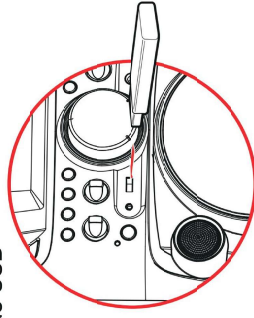
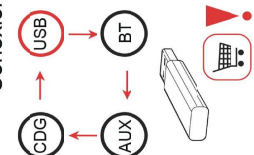


1 Press FUNCTION button to toggle to BT mode.
Appuyez le bouton FUNCTION (sélecteur de fonctions) pour naviguer au mode BT.
Presione el botón de función para cambiar al modo de USB.



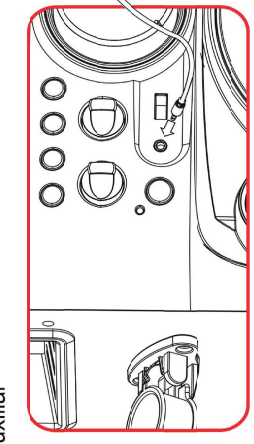
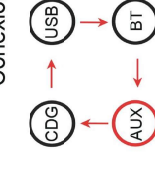
14 USB Connection

Connexion USB
Conexión de USB



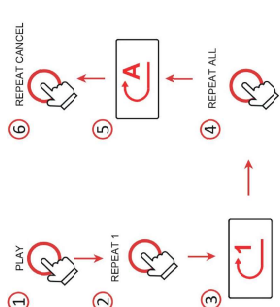
17 Aux Connection

Connexion auxiliaire
Conexión auxiliar



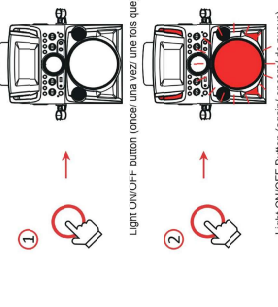
17 Aux Connection

Connexion auxiliaire
Conexión auxiliar



17 Aux Connection

Connexion auxiliaire
Conexión auxiliar



SPECIFICATIONS

Audio Power (MAX): 5W (RMS)
Output Impedance: 4 OHMS
Power Section: Access Programming
Sampling System: 8 Times Over Sampling
Microphone: -75 db 000 OHMS Impedance with
Ø 3.3mm Dynamic Microphone
Frequency: 10Hz - 20KHz

Dimensions (W x H x D):
11.9 x 14.4 x 8.5 inches /
30.2 x 36.6 x 21.5 cm
Weight: 5.1 lbs / 2.3 kg
FCC ID: OWT-KS998T

Station audio:
Puissance de sortie: 5W (RMS)
Impédance de sortie: 4 OHMS
Système d'alimentation:
Entrée: 100-240V-50/60Hz
Sortie: DC 3.0V - 1.0A
La réponse en fréquence: 100 Hz - 20 KHz

Dimensions (L x H x P)
11.9 x 14.4 x 8.5 inches /
30.2 x 36.6 x 21.5 cm
Poids: 5.1 lbs / 2.3 kg
FCC ID: OWT-KS998T

Section de sortie:
Puissance de sortie (maximale): 5W (RMS)
Impédance de sortie: 4 OHMS
Système de mémoire de programme
Entrée: 100-240V-50/60Hz
Sortie: DC 3.0V - 1.0A
CD: CD
Réponse de fréquence: 100 Hz - 20 KHz

Signals: 1b - noise ratio: 50 db
Number of memory: 20
20 passes de mémoire de programme
Système de mémoire de programme
8 fois plus de l'échantillonnage
Microphone: CHMS Impedance con
Ø 3.3mm Dynamic Microphone

Dimensions (W x H x D):
11.9 x 14.4 x 8.5 inches /
30.2 x 36.6 x 21.5 cm
Poids: 5.1 lbs / 2.3 kg
FCC ID: OWT-KS998T

PRESUPUESTO

CARACTERÍSTICAS