

MT711S Load Cell



<u>Features</u>	<u>Applications</u>
Washer Load cell	Process Control Devices
Stainless Steel Construction	Bolt testing
Ultra Low Profile	Rope tension
Capacity: 1t	Force Measurements
Easy to Install	Testing machines

Specifications

Capacity	kg	1000
Non-Linearity	(%FS)	≤±0.5
Creep (30 minutes)	%FS/30min	≤±0.1
Temperature effect on sensitivity	(%FS/10C)	≤±0.1
Temperature effect on zero	(%FS/10C)	≤±0.05
Output sensitivity	(mv/v)	1.5±0.5
Input resistance	(Ω)	750+/-30
Output resistance	(Ω)	700+/-5
Insulation resistance	(MΩ)	≥ 5000 (50VDC)
Zero balance	(%FS)	2.0
Temperature, Compensated	(°C)	-10~+50
Temperature, Operating	(°C)	-20~+60
Excitation, Recommended	(V)	5~12(DC)
Excitation, Max	(V)	18(DC)
Safe overload	(%FS)	150
Ultimate overload	(%FS)	300

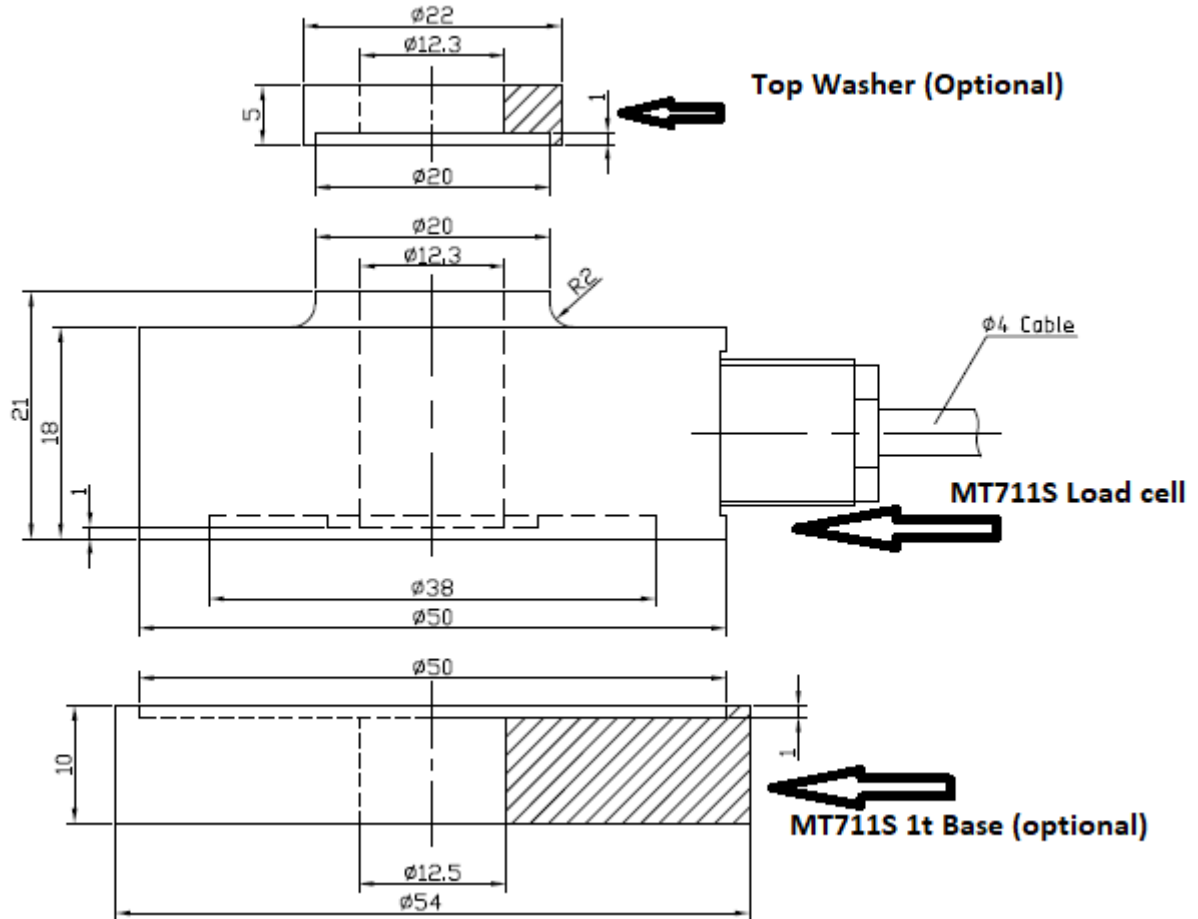


Millennium Mechatronics Limited
 Email: info@meltrons.com | www.meltrons.com



MT711S Load Cell

MT711S load cell dimensions are given below. The top washer and base are accessories of MT711 1t load cells.



Dimensions (mm)

Cable

4 Core, 4 mm dia

Cable Length: 3 m

Color Code

Exc+ Red, Exc- Black

Sig+ Green, Sig- White

Screen- Transparent

Specifications are subject to change without notice for improvement

MT711S1 REV01-17022022



Millennium Mechatronics Limited
Email: info@meltrons.com | www.meltrons.com

