

MT701 Compression Load Cell



| Features | Applications |
|-----------------------------------|--------------------------|
| Capacities 23t to 450t | Weighbridges |
| Stainless Steel Construction | Tank weighing |
| Laser welded, Hermetically sealed | Hopper and Silo weighing |
| High Accuracy | |
| Column Construction | |

Specifications

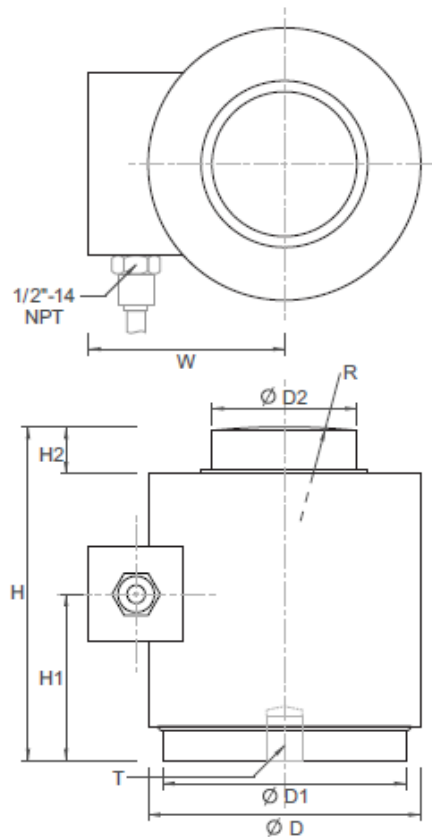
| | | |
|---|------------|---|
| Rated Capacity | t (klb) | 23,45,90,180,225,450 (50,100,200,400,500;1000 klb) |
| Combined Error | (%FS) | ≤±0.023 |
| Creep (30 minutes) | %FS/30min | ≤±0.024 |
| Temperature effect on sensitivity | (%FS/10C) | ≤±0.010 |
| Temperature effect on zero | (%FS/10C) | ≤±0.015 |
| Output sensitivity at rated capacity in klb | (mv/v) | 1.75+/-0.01 |
| Input resistance | (Ω) | 450+/-5 |
| Output resistance | (Ω) | 480+/-5 |
| Insulation resistance | (MΩ) | ≥ 5000 (50VDC) |
| Zero balance | (%FS) | 1.0 |
| Temperature, Compensated | (°C) | -10~+40 |
| Temperature, Operating | (°C) | -20~+60 |
| Excitation, Recommended | (V) | 5~12(DC) |
| Excitation, Max | (V) | 20(DC) |
| Safe overload | (%FS) | 150 |
| Ultimate overload | (%FS) | 300 |



Millennium Mechatronics Limited
Email: info@meltrons.com | www.meltrons.com



MT701 Compression Load Cell



Dimensions in mm (except Thread T)

| Part Number | Cap | D | D1 | D2 | H1 | H2 | W | H | R | T |
|-------------|------|-------|-------|-------|-------|----|-----|-------|------|-------------------------------|
| MT701LC10K | 4.5t | 75.0 | 62.0 | 31.8 | 32.5 | 10 | 64 | 83 | 127 | 1/2"-20, 1/2" deep |
| MT701LC23t | 23t | 75.0 | 62.0 | 31.8 | 32.5 | 10 | 64 | 83 | 127 | 1/2"-20, 1/2" deep |
| MT701LC45t | 45t | 100.5 | 82.6 | 59.0 | 54.6 | 14 | 86 | 127 | 152 | M20*1.5 or 3/4"-16, 3/4" deep |
| MT701LC90t | 90t | 150.6 | 134.4 | 80.0 | 92.0 | 26 | 108 | 184.5 | 400 | M20*1.5 or 3/4"-16, 3/4" deep |
| MT701LC180t | 180t | 150.6 | 134.4 | 80.0 | 92.0 | 26 | 108 | 184.5 | 400 | M20*1.5 or 3/4"-16, 3/4" deep |
| MT701LC225t | 225t | 165.0 | 148.0 | 93.7 | 92.0 | 26 | 108 | 229 | 400 | M20*1.5 or 3/4"-16, 3/4" deep |
| MT701LC450t | 450t | 177.0 | 165.1 | 139.7 | 117.0 | 22 | 115 | 304.8 | 1145 | M20*1.5 or 3/4"-16, 3/4" deep |

Cable: 12m long, 4 core

Specifications are subject to change without notice for improvement



Millennium Mechatronics Limited
Email: info@meltrons.com | www.meltrons.com

