

MT404 LOAD CELL

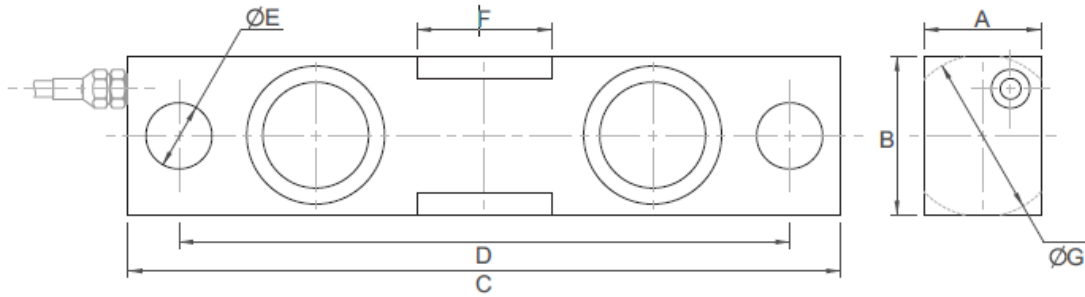


<p>Features</p> <p>Double ended shear beam</p> <p>Tool Steel Construction</p> <p>Water Proof</p> <p>Electroless Nickel Plated</p>	<p>High Accuracy</p> <p>Easy to install</p> <p>IP67 Protection</p> <p>Applications</p> <p>Truck scales, Railway Scales, Hopper and Silo weighing</p>
--	---

Specifications

Capacities	Klb	5, 10, 25, 50, 75
Combined Error	(%FS)	≤±0.020
Creep	%FS/30min	≤±0.017
Temperature effect on sensitivity	(%FS/10C)	≤±0.010
Temperature effect on zero	(%FS/10C)	≤±0.017
Output sensitivity	(mv/v)	3.0±0.01
Input resistance	(Ω)	700±7
Output resistance	(Ω)	700±7
Insulation resistance	(MΩ)	≥ 5000(50VDC)
Zero balance	(%FS)	1.0
Temperature, Compensated	(°C)	-10~+40
Temperature, Operating	(°C)	-35~+65
Excitation, Recommended	(V)	5~12(DC)
Excitation, Max	(V)	18(DC)
Safe overload	(%FS)	150
Ultimate overload	(%FS)	300

MT404 LOAD CELL



MT404 Load cell Dimensions (mm)

Capacity (klb)	A	B	C	D	E	F	G
5	31.0	31.0	190.5	158.8	13.0	29.0	31.5
10-25	36.5	49.3	222.3	190.5	20.6	42.0	50.5
35	38.0	63.5	222.3	190.5	20.6	50.0	63
50-75	62.0	75.0	343.0	292.0	33.3	80.0	76.2

1klb= 453kg (0.453t) approx

Cable: 4 Core, 5.4mm dia

Cable Length: 12m

Color Code

Exc+ Red, Exc- Black

Sig+ Green, Sig- White

Screen- Transparent



Millennium Mechatronics Limited
 Email: info@meltrons.com | www.meltrons.com