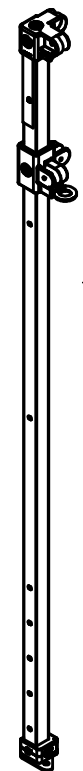
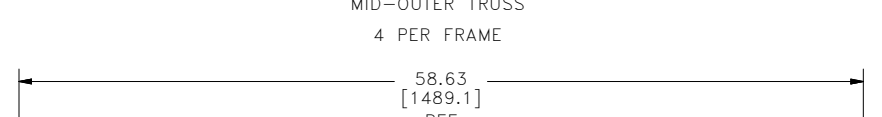
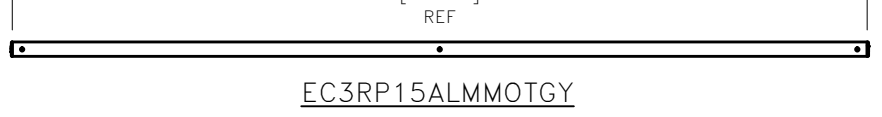
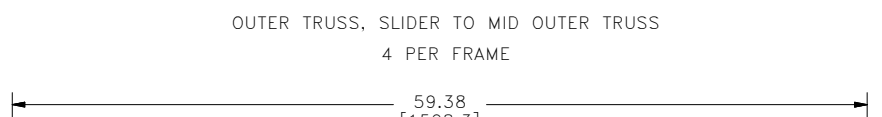
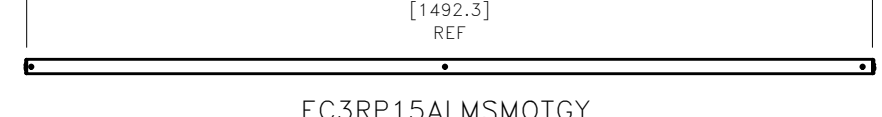
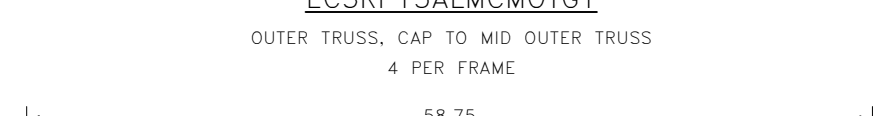
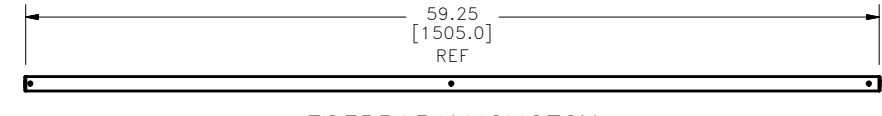
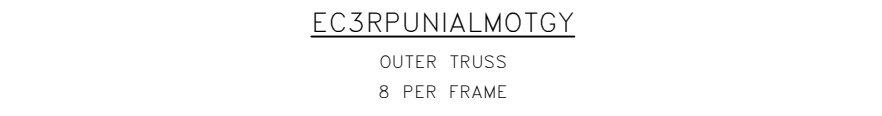
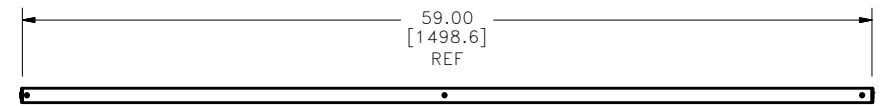
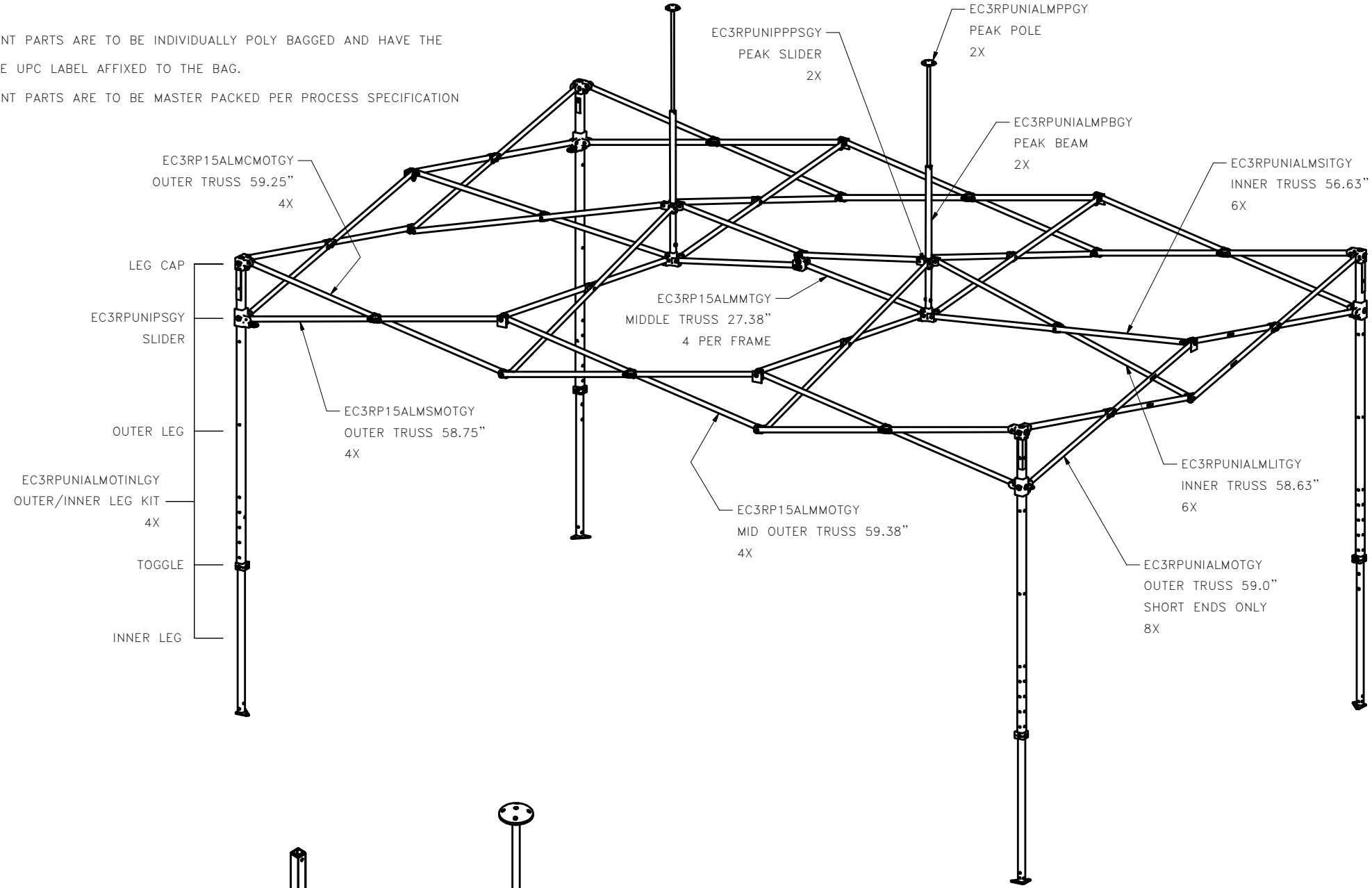


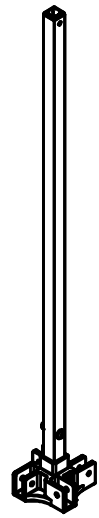
THIS DOCUMENT/DATA RECORD IS THE PROPERTY OF INTERNATIONAL E-Z UP, INC. AND CONTAINS PROPRIETARY AND CONFIDENTIAL INFORMATION. ALL RECIPIENTS AGREE TO THE FOREGOING AND AGREE NOT TO MAKE ANY DUPLICATION THEREOF OR TO DISCLOSE THE INFORMATION HEREIN TO OTHERS OR TO USE IT FOR ANY PURPOSE OTHER THAN FOR WHICH IT IS LOANED WITHOUT THE EXPRESS WRITTEN CONSENT OF INTERNATIONAL E-Z UP, INC. AND TO RETURN THE DOCUMENT/DATA UPON DEMAND.

REVISIONS		
REV	DATE	BY
A	05/16/16	MAO

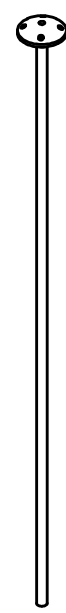
- NOTES:
- REPLACEMENT PARTS ARE TO BE INDIVIDUALLY POLY BAGGED AND HAVE THE APPROPRIATE UPC LABEL AFFIXED TO THE BAG.
 - REPLACEMENT PARTS ARE TO BE MASTER PACKED PER PROCESS SPECIFICATION PS-00008.



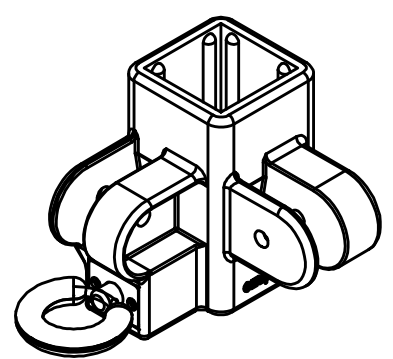
EC3RPUNIALMOTINLGY
OUTER/INNER LEG
INCLUDES:
-OUTER LEG
-INNER LEG
-LEG CAP
-SLIDER
-TOGGLE
4 PER FRAME



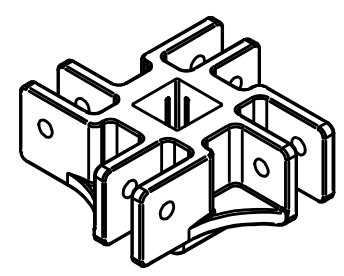
EC3RPUNIALMPBGY
PEAK BEAM
2 PER FRAME



EC3RPUNIALMPPGY
PEAK POLE
2 PER FRAME



EC3RPUNIPSGY
SLIDER
COOL GRAY 6C ONLY
4 PER FRAME



EC3RPUNIPPPSGY
PEAK SLIDER
COOL GRAY 6C ONLY
2 PER FRAME

MATERIAL:	DRAWN BY: MAO	DATE: 05/16/16
COLOR:	APPROVED BY:	DATE:
TOLERANCE AND NOTES UNLESS OTHERWISE SPECIFIED:		
THREE PLACE DECIMALS: ±.010	ALL DIMENSIONS ARE IN INCHES [mm]	
TWO PLACE DECIMALS: ±.02	ALL THREADS UNIFIED CLASS 2	
FRACTIONAL: ±1/16	REMOVE ALL BURRS AND BREAK SHARP EDGES .005 TO .015.	
ANGULAR - ALL OTHER: ±5°	EXCEPT FOR POWDER COATED SURFACES, TOLERANCES INCLUDE FINISH.	
CONCENTRICITY MAX: 0.005	ALL SQUARE TUBING OUTSIDE SURFACES TO BE FLAT WITHIN +.000 CONVEX, -.015 CONCAVE.	

International E-Z UP Inc.
1900 Second Street, Norco, CA 92860 USA
P: (951) 279-0999 F: (951) 279-0888

International E-Z UP

TITLE: REPLACEMENT PARTS-ECLIPSE 15' ALUMINUM FRAME, G3
DRAWING NO. 15695 PART NO.
SCALE: NONE