

Leaf Square Coffee Table

Designer - Marco Acerbis

FINISHES

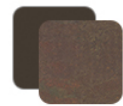
Frame, Top



White Frame
Light Metal Top



Graphite Frame
Dark Grey Top



Mokka Frame
Corten Top



White Frame
Natural Teak Top



Graphite Frame
Natural Teak Top



Mokka Frame
Natural Teak Top

MATERIALS

- Powder-coated Aluminum
- Vitter
- Wood

The 80×80 coffee table from the Leaf collection has an aluminum frame with a vitter top available in three colors.

