

Frame Three Seater Sofa

Designer - Ludovica + Roberto Palomba

FINISHES

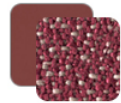
Frame, Cushions



White Frame
Silver Cushions



Graphite Frame
Dark Gray Cushions



Red Frame
Indian Red Cushions

Rope



Gray



Red

Fabric Pillow (Optional)



Dark Gray



Silver



Plain Gray



Plain Bordeaux



Plain Sky



Plain White



Melange Beige

MATERIALS

- Powder-coated Aluminum
- Fabric
- Rope

The Frame three-seater sofa is characterized by the same key elements of the whole collection: the aluminum tubular structure joins the functionality of the weather-resistant material with the elegance of the sinuous shapes. The solid and welcoming seating is enriched by a selection of bold fabrics, also used to upholster the voluminous soft cushions of the backrest.

