

## Frame Dining Armchair

Designer - Ludovica + Roberto Palomba

### FINISHES

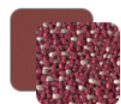
Frame, Cushions



White Frame  
Silver Cushions



Graphite Frame  
Dark Gray Cushions



Red Frame  
Indian Red Cushions

### Rope



Gray



Red

### MATERIALS

- Powder-coated Aluminum
- Fabric
- Rope

The Frame dining armchair is the union of all the key elements of this collection. The slim aluminum structure is combined with the soft cushions of the backrest and with the interweaving of the padded rope. Refined and sensual, it is the best decorative addition to furnish your outdoor dining area.

