

## Argo//Alu Low Rectangular Coffee Table

Designer - Ludovica + Roberto Palomba

### FINISHES

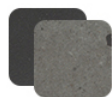
Frame, Top



White Frame  
Calacatta Top



Graphite Frame  
Calacatta Top



Graphite Frame  
Gray Moon Top

### MATERIALS

- Powder-Coated Aluminum
- Porcelain Stoneware

The lowest coffee table of the Argo Alu collection is the ideal product to create different combinations of tables in your outdoor living space. The solidity of the aluminum structure supports a stoneware top available in different colors.

