

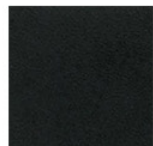
SQUARE

FINISHES

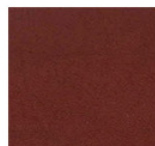
FINISH TYPE

- SINGLE SIDED
- DOUBLE SIDED

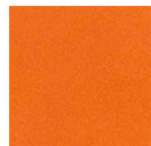
LEATHER FINISH



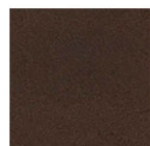
BLACK



WINE



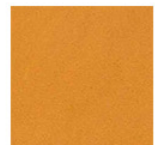
ORANGE



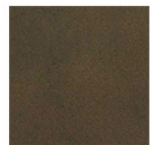
DARK BROWN



RED



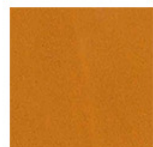
OCHRE



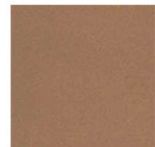
KHAKI



BLUE



ELM



SOLE



GREY



WHITE

MATERIALS

- LEATHER, SUEDE

SQUARE TRAYS

Trays from "Regular" collection, made from a single sheet of two-ply leather, a few precise cuts, and folds held together with hand stitching.



Square Tray Large
9.45" x 9.45" x h 2.36"
(cm 24 x 24 x h 6)



Square Tray Small
5.9" x 5.9" x h 1.97"
(cm 15 x 15 x h 5)

SINGLE SIDED

- Full-grain leather outside doubled with the suede inside (rough internal finish).
- Same tone on tone color on both sides.

DOUBLE SIDED

- Full-grain leather on both sides (smooth finish on both sides).
- Doubled leather to obtain greater thickness and color contrast between the inside and outside.