

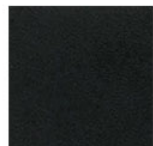
## ROBIN

### FINISHES

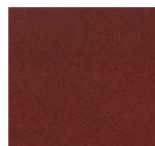
#### FINISH TYPE

- SINGLE SIDED
- DOUBLE SIDED

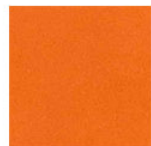
#### LEATHER FINISH



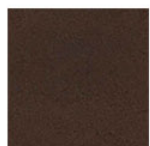
BLACK



WINE



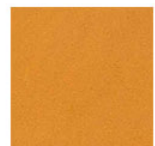
ORANGE



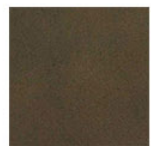
DARK BROWN



RED



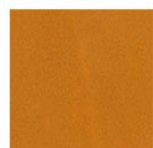
OCHRE



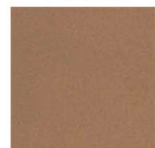
KHAKI



BLUE



ELM



SOLE



GREY

WHITE

#### MATERIALS

- LEATHER, SUEDE

## OSCAR MASCHERA

### ROBIN BASKETS

From "Basic" collection,  
Takes shape from a single sheet  
of two-ply leather, a few precise cuts  
and folds held together with hand stitching.



**Robin Small**

8.26" x 8.26" x 7.48"  
(cm 21 x 21 x 19)



**Robin Medium**

12.20" x 12.20" x 14.56"  
(cm 31 x 31 x 37)



**Robin Large**

15.74" x 15.74" x 18.89"  
(cm 40 x 40 x 48)

#### SINGLE SIDED

- Full-grain leather outside doubled with the suede inside (rough internal finish).
- Same tone on tone color on both sides.

#### DOUBLE SIDED

- Full-grain leather on both sides (smooth finish on both sides).
- Doubled leather to obtain greater thickness and color contrast between the inside and outside.