

PROUST

FINISHES

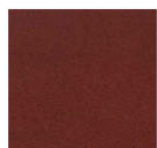
FINISH TYPE

- SINGLE SIDED
- DOUBLE SIDED

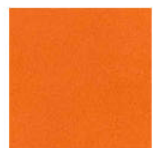
LEATHER FINISH



BLACK



WINE



ORANGE



DARK BROWN



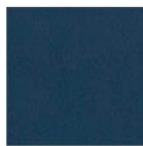
RED



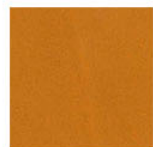
OCHRE



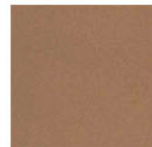
KHAKI



BLUE



ELM



SOLE



GREY

WHITE

MATERIALS

- LEATHER, SUEDE

PROUST MOUSE PAD

A mouse pad from the "Desk" collection.
Allows the choice of different colors
for the top and the underside.



Overall Dimensions
25.5" x 19.5" (cm 65 x 50)

SINGLE SIDED

- Full-grain leather outside doubled with the suede inside (rough internal finish).
- Same tone on tone color on both sides.

DOUBLE SIDED

- Full-grain leather on both sides (smooth finish on both sides).
- Doubled leather to obtain greater thickness and color contrast between the inside and outside.