

MARCEL

FINISHES

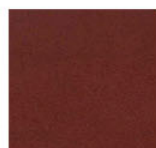
FINISH TYPE

- SINGLE SIDED
- DOUBLE SIDED

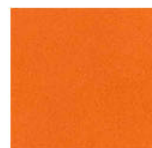
LEATHER FINISH



BLACK



WINE



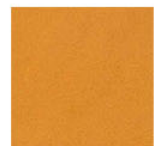
ORANGE



DARK BROWN



RED



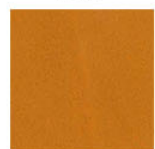
OCHRE



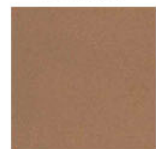
KHAKI



BLUE



ELM



SOLE



GREY

WHITE

MATERIALS

- LEATHER, SUEDE



MARCEL BASKET

From "Slash" collection,
Takes shape from a single sheet
of two-ply leather, a few precise cuts
and folds held together with hand stitching.



Overall Dimensions

12.59" x 12.59" x 14.17"
(cm 32 x 32 x 36)

SINGLE SIDED

- Full-grain leather outside doubled with the suede inside (rough internal finish).
- Same tone on tone color on both sides.

DOUBLE SIDED

- Full-grain leather on both sides (smooth finish on both sides).
- Doubled leather to obtain greater thickness and color contrast between the inside and outside.