

**GIULIANO**

**FINISHES**

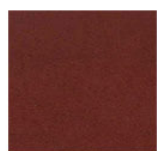
**FINISH TYPE**

- DOUBLE SIDED

**LEATHER FINISH**



BLACK



WINE



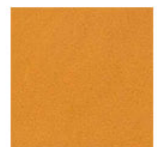
ORANGE



DARK BROWN



RED



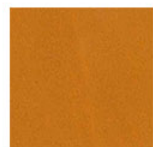
OCHRE



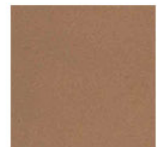
KHAKI



BLUE



ELM



SOLE



GREY

WHITE

**MATERIALS**

- LEATHER



**GIULIANO DESK PAD**

A desk pad from the "Rivets" line.

The corners are rounded

The two-ply leather is held together with rivets.

The dyed edges intensify the contrast effect.



**Overall Dimensions**

23.62" x 19.68" (cm 60 x 50)

**DOUBLE SIDED**

- Full-grain leather on both sides (smooth finish on both sides).

- Doubled leather to obtain greater thickness and color contrast between the inside and outside.