

**ALDO**

**FINISHES**

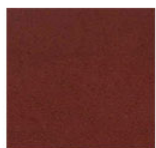
**FINISH TYPE**

- DOUBLE SIDED

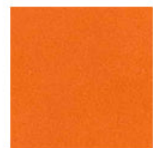
**LEATHER FINISH**



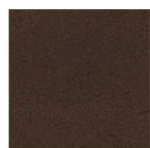
BLACK



WINE



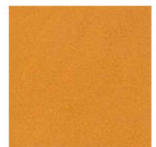
ORANGE



DARK BROWN



RED



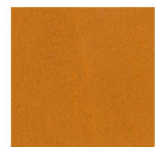
OCHRE



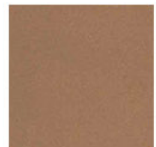
KHAKI



BLUE



ELM



SOLE



GREY



WHITE

**MATERIALS**

- LEATHER

**ALDO TRAY**

A tray from "Rivets" collection,  
Made with a single piece of leather  
that is folded and held together with rivets.



**Overall Dimensions**

8.27" x 8.27" x h 2.36"  
(cm 21 x 21 x h 6)



**DOUBLE SIDED**

- Full-grain leather on both sides (smooth finish on both sides).
- Doubled leather to obtain greater thickness and color contrast between the inside and outside.