

CARILLON

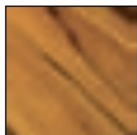
design // Mazzega

Diffuser

Frame: **Polished Chrome**
Polished Gold

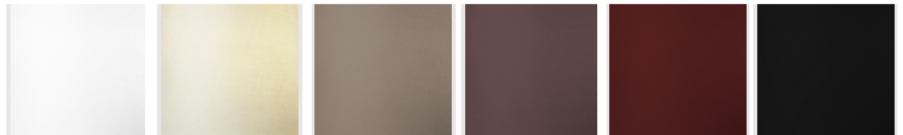


Trasparent
Crystal

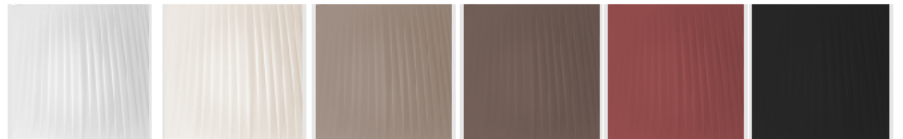


Trasparent
Amber

SHADE FABRIC / COLOR



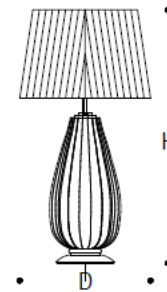
Plain White Plain Ivory Plain Dove Gray Plain Tobacco Plain Bordeaux Plain Black



Pleated White Pleated Ivory Pleated Dove Gray Pleated Tobacco Pleated Bordeaux Pleated Black

MATERIALS - Glass - Metal - Fabric

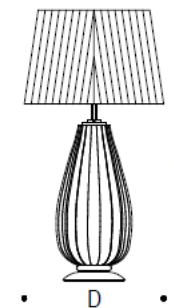
Carillon - CARTAVSM01



D= 030 Cm 11.8 in
H= 058 Cm 22.8 in
Kg 008 lb 17.7

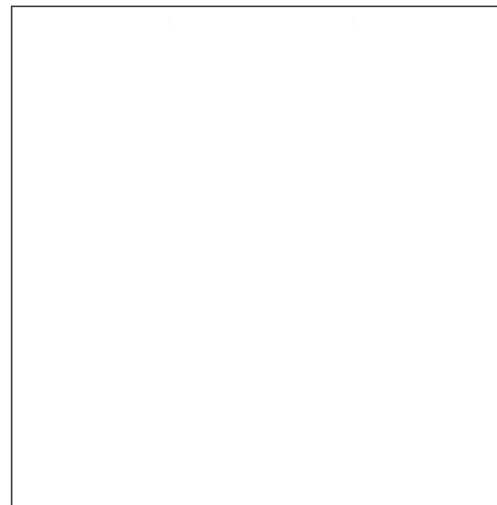
E27 1X MAX 60W

Carillon - CARTAVBG01



D= 040 Cm 15.7 in
H= 078 Cm 30.7 in
Kg 010 lb 22.1

E27 1X MAX 100W



Carillon Table Lamp