

## OLTRALPE STORAGE UNIT

Design Inga Sempé

### FINISHES

#### Mirrored Glass Finish



Laminated Glass

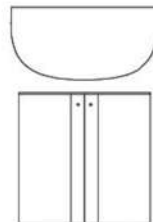
### MATERIALS

- Glass
- Mirror

**Oltralpe** - Storage units in a special mirrored glass with soft curved shapes. The structure is in 6+6 mm laminated glass fully mirrored, both inside and outside. The doors are in 6 mm curved and tempered double-sided mirrored glass, characterized by distorted and undefined reflections, which allow the material to be elusive and optically fluid. The doors have a blue-motion soft closure and are opened with cylindrical glass handles.

### Available Dimensions: L x D x H

**OLT01**



**OLT02**



**OLT01** - 37.79" x 18.50" x 37.40" (96x 47x 95 cm)

**OLT02** - 17.32" x 10.23" x 21.65" (44x 26x 55 cm)

