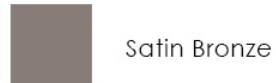


MARI CRISTAL

Design Philippe Starck

FINISHES

Leg Finish: Stainless Steel



Top Finish: Transparent/ Coloured Glass



MATERIALS

- Glass
- Mirror
- Stainless Steel



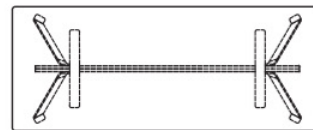
Mari Cristal - A series of rectangular dining tables.

Legs in mirror-polished stainless steel or painted in a satin bronze finish.

Top in 12 mm or can be laminated in 6+6 mm glass.

Joined by a beam in 19+19 mm.

MAC01/02/03/04/05



D



H

L

Available Dimensions: L x D x H

MAC01 - L 200/ 78.74" - D 80/ 31.50" - H 72/ 28.35"

MAC02 - L 200/ 78.74" - D 90/ 35.43" - H 72/ 28.35"

MAC03 - L 220/ 86.61" - P 80/ 31.50" - H 72/ 28.35"

MAC04 - L 220/ 86.61" - P 90/ 35.43" - H 72/ 28.35"

MAC05 - L 250/ 98.53" - P 90/ 35.43" - H 72/ 28.35"