

Claudio Bellini

Urban Modular Bookcase

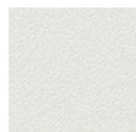
2009

FINISHES

Finish - Polyethylene



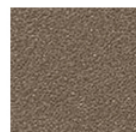
Black
RAL9011



White
RAL9016

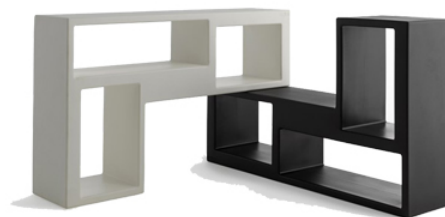


Dusty Gray
RAL7037



Beige Gray
RAL7006

The 'L' shaped polyethylene module can be used in any position. A system without hooks or joints which allows the user to create walls, screens, horizontal and vertical elements, angles, benches, entertainment systems – everything that comes to mind.



L-shaped module, stackable and suitable for use with each other, made of polyethylene by means of a rotational mould.

MATERIALS

- Polypropylene
- Plastic

