



RAJUGA
INVISIBLE INVINCIBLE

BASIC

POLARIS
SOLUTIONS

OUR STORY

Polaris Solutions Ltd, founded in 2009 by two former IDF SOF fighters to increase the survivability of troops in the battlefield. We use our expertise to create innovative and effective survivability solutions for Signature Management and Tactical textiles needs.

Our Brands:

RAJUGA – State of the art Camouflage and Concealment products

OSO GEAR – Tough and Durable Tactical Textiles

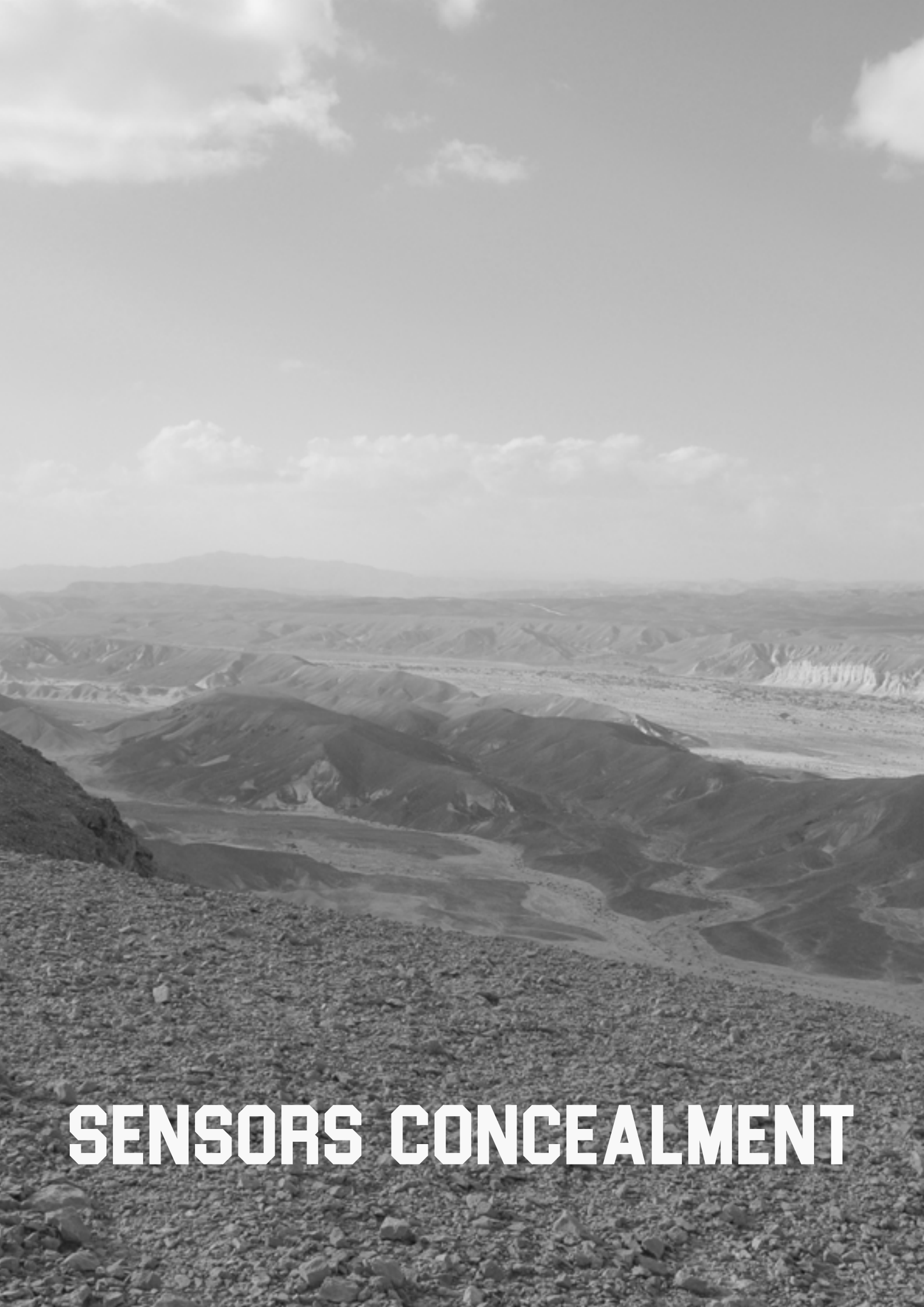
Our products are being used by SOF around the globe



TABLE OF CONTENTS

SENSOR CONCEALMENT	>>	4
PERSONAL	>>	6
OBSERVATION POSTS CONCEALMENT	>>	18
TRAINING AND SOLUTIONS	>>	24





SENSORS CONCEALMENT



FABRIC SENSOR COVERS

Using sensors in the battlefield is increasing operational effectiveness through the provision of trusted information between linked sensors in support of the tactical commander in the field.

To get full effectiveness, the sensors must be hidden from the enemy.

We offer a wide range of sensor covers, tailored made, to meet specific requirements.

SPEC

- ▷ Allowing full operation of the sensor
- ▷ Allowing broadcast through all bands
- ▷ Allowing see through in all wavelength (visual, thermal, radar etc)
- ▷ Special windows for antenna and cables
- ▷ Can be designed as weatherproof

FABRIC BASED SENSOR COVERS FEATURES:

- ▷ Feather light and low volume
- ▷ Short detection range - less than 10m
- ▷ Highly durable
- ▷ Easy and fast to setup
- ▷ Perfect for hasty missions

RAID CAMO SUIT

FOLIAGE RAID CAMO SUIT

SNIPER CANOPY

COUNTER TRACKING OVERSHOES

MITZNEFET-L

RAJUGA MASK

RAJUGA PONCHO

RAJUGA PONCHO ULTRA LIGHT

MESH GHILLIE SUIT

RAJUGA KEFFIYEA





PERSONAL



RAID CAMO SUIT

Successful RAID is all about getting in and out without being compromised. To do so in a sensors oriented battlefield, we developed a Camo Suit that enable the user to be undetected in various environments. Our unique RAID Suit is super Lightweight and Modular.

SPEC

▷ Total Weight: 960 gr / 2.11 pounds

▷ Parts:

Body Cover - 500gr (packed size:
20 cm Length, 12 cm width)

2 X Leg Cover - 230gr (packed
size: 13 cm Length, 16 cm width)



PATTERNS



Light Stone Dark Stone wood Land Desert

SIZES

One size fits most



INTENDED USE





FOLIAGE RAID CAMO SUIT

Successful RAID is all about getting in and out without being compromised. To do so in a sensors oriented battlefield, we developed a Camo Suit that enable the user to be undetected in various environment
Our unique RAID Suit is super Lightweight and Modular.

This version is specified for landscapes rich in flora

SPEC

- › Total Weight: 1.55 kg / 3.4 pounds
- › Parts:
 - Body Cover - 850gr (packed size:20 cm Length,12 cm width)
 - 2 X Leg Cover - 350gr (packed size: 13 cm Length,16cm width)

PATTERNS



SIZES

One size fits most

INTENDED USE





SNIPER CANOPY

Our Sniper Canopy is a local standpoint, assembled in 2 seconds. It is the perfect solution for a local force, in the open field or in the urban warfare, where a quick positioning change is required. The canopy allows a high efficiency positioning of a local cover force.

Several patterns are available and are easily replaced to fit any area of operation.

SPEC

- ▷ Weight 650 gr
- ▷ Highly durable fiberglass structure
- ▷ Replacing canopies enabled

PATTERNS



INTENDED USE





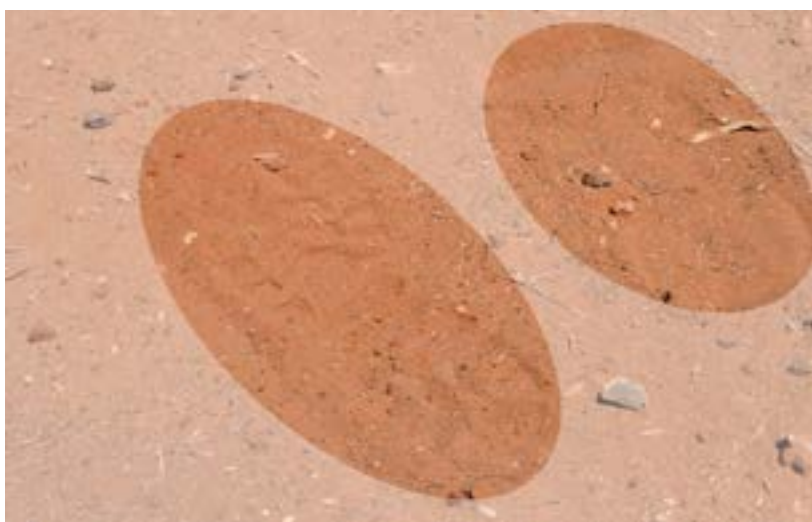
COUNTER TRACKING OVERSHOES

The main purpose of our Counter Tracking Overshoes is to leave as minimal a track as possible, unlike the deep and distinctive treads of most hiking or military boots. This makes it harder to track, and in addition the track will not last as long as those made by normal boot treads.
Fits most military boots

SIZES

L \ XL

INTENDED USE





MITZNEFET-L

Our 2 Camo sided helmet cover
Perfect for breaking helmet and head
silhouette
Camo Woodland / Camo Desert
IDF love it!

SPEC

- ▷ Wt.: 120gr /0.26 pound.
- ▷ Made from our Polyester Mesh
- ▷ FR treated

PATTERNS



wood Desert
Land

INTENDED USE





RAJUGA MASK

Our Tactical Balaclave was designed specially for extreme activities, with breathable and stretchy material and tactical features, we have you covered!

FEATURES

- ▷ Breathable fabric
- ▷ Special Openings for Air Tube Earpieces
- ▷ Seamless at the neck, with just a flat seam on the top of head
- ▷ Can be worn under a helmet, as a hood, over the face or around the neck
- ▷ Comes with Nylon Pouch

SPEC

- ▷ Weight: 46g (0.1 lbs)
- ▷ Material: Breathable Flexible Fabric

PATTERNS



SIZES

one size fit most

INTENDED USE





RAJUGA PONCHO

The essential camouflage product, our RAJUGA PONCHO is a necessity for any use from hunting and airsoft to police and military operations.

FEATURES

- ▷ Allows Full maneuverability and
- ▷ complete functionality during combat
- ▷ Low volume and weight
- ▷ Reversible: two sided coloration

SPEC

- ▷ Wt.:1.175 kg /2.6 pound.
- ▷ Main fabric:polyester mesh 240 g
- ▷ Size:2.4mX1.5m /7.9 ft X4.9 ft

PATTERNS



wood Desert
Land

SIZES

one size fit most

INTENDED USE





RAJUGA PONCHO ULTRA LIGHT

The essential camouflage product, our RAJUGA PONCHO is a necessity for any use from hunting and airsoft to police.

SPEC

- ▷ Wt:220 gr /0.4 pound.
- ▷ Main fabric:knitted fabric 213 g
- ▷ Size:2.4mX1.5m /7.9 ft X4.9 ft

PATTERNS



SIZES

one size fit most

INTENDED USE





MESH GHILLIE SUIT

A 3 pieces camouflage suit designs for various uses from hunting to homeland security.

The suit has 3 pieces: trousers, torso and head cover.

The suit is reversible with one side woodland camo pattern and other side with desert camo pattern.

SPEC

▷ Wt.:1.175 kg /2.6 pound.

▷ Main fabric:polyester mesh

▷ Size:2.4mX1.5m /7.9 ft X4.9 ft

PATTERNS



wood Desert
Land

SIZES

one size fit most

INTENDED USE



Credit: Reuven Castro - Walla News



RAJUGA KEFFIYEA

FEATURES

- ▷ Our tactical keffiyeh is designed especially for extreme activities
- ▷ Made from Dry Fit fabric which manage sweat and humidity
- ▷ Soft, breathable and durable, for providing comfort in any activity and weather condition
- ▷ Great for protection from dust, cold and heat
- ▷ Printed with our unique camouflage patterns to enhance survivability
- ▷ Various uses: neck cover, head cover, blanket arm sling etc.

SPEC

- ▷ Wt.: 230 g / 0.5 pound.
- ▷ FR Treated

COLORS



wood Land Desert

SIZES

one size fit most

INTENDED USE



URBAN CAMO KIT

MINI URBAN CAMO KIT

HASTY CAMO KIT





OBSERVATION POSTS CONCEALMENT



URBAN CAMO KIT

Defense and HLS forces around the world are operating more and more in the Urban Environment, from SF units in Afghanistan villages dealing with terrorists to SWAT teams combating with drug dealers in the major cities.

The Urban Environment place a new challenge for snipers and other forces who want to see and not being seen. Our Urban Camo Kit give the operator the ability to do exactly that.

SPEC

- ▷ Weight:-3.8kg- 8.3lbs
- ▷ Measurements (packed Kit):
Length 60cm, Diameter— 15cm
- Measurements (Deployed):
Length 200cm, Height— 200cm

▷ Parts:

Pack Sac:

made from Nylon 420 fabric,
can be used to close other
openings(such as doors),
Measurements: Length - 3m,
Width - 2.2m.

Can be separated into two
1.5mX2.2m parts.

Mesh:

200g Sq.M including built in
poles:

Aluminum 7075

INTENDED USE



WITHOUT THE KIT



WITH THE KIT



MINI URBAN CAMO KIT

Defense and HLS forces around the world are operating more and more in the Urban Environment, from SF units in Afghanistan villages dealing with terrorists to SWAT teams combating with drug dealers in the major cities.

The Urban Environment place a new challenge for snipers and other forces who want to see and not being seen. Our Urban Camo Kit give the operator the ability to do exactly that.

SPEC

- ▷ Measurements (Deployed): Length 150cm,
- ▷ Height—170 cm
- ▷ Weight: 2.3 kg
- ▷ Parts:
 - Pack Sac:

made from Nylon 420 fabric,
can be used to close other
openings (such as doors),
Measurements: Length— 3m,
Width - 2.2m.

Can be separated into two
1.5mX2.2m parts.

Mesh:

200g Sq.M including built in
poles:

Aluminum 7075

INTENDED USE



WITHOUT THE KIT



WITH THE KIT





SQUAD INFRASTRUCTURE KIT

The Infrastructure Kit is a supportive element for hides, perfect for fire base and Reconnaissance positions.

SPEC

- ▷ Designed for 2-4 persons
- ▷ Total Weight: 4.4 Pound-2 kg
- ▷ Footprint Measurements
- ▷ 5.7X4.1 Ft-175x125 cm
- ▷ Kit size when folded:0.6X1.8 Ft-50 x20 cm
- ▷ Aluminum poles
- ▷ Mil Spec Straps
- ▷ Mil Spec Nylon buckles and hardware

INTENDED USE



PARTS



Fly



Footprint



Pack Sack



Poles



HASTY CAMO KIT

A Camouflage kit for 4-6 observation/
fire base squad.

FEATURES

- ▷ Shoot through / See through mesh
- ▷ Replaceable Camo Mesh
- ▷ Rugged Infrastructure
- ▷ Dedicated straps for adding natural cover
- ▷ Hasty set up: 10 minutes
- ▷ Include waterproof footprint

PARTS

- ▷ Mesh - 4.5X4.5 m
- ▷ Infrastructure Kit -9004-0002
- ▷ Bag

PATTERNS



wood Desert
Land

INTENDED USE

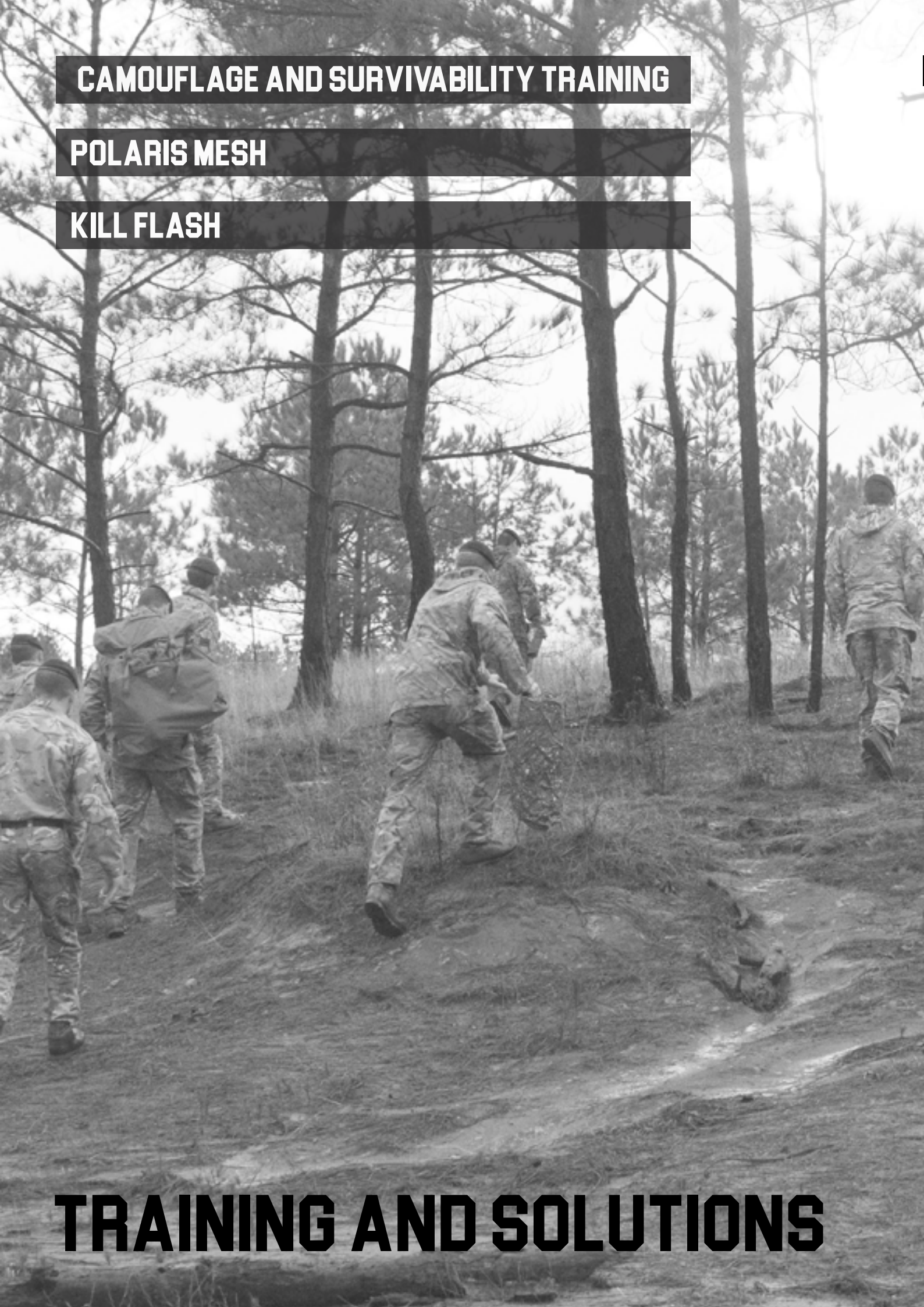


CAMOUFLAGE AND SURVIVABILITY TRAINING

POLARIS MESH

KILL FLASH

TRAINING AND SOLUTIONS





CAMOUFLAGE AND SURVIVABILITY TRAINING

Concealment. One of the oldest trades of the hunter.

In order to survive the modern battlefield one must master this tactical task.

The ability to be concealed is crucial for day and night operations, and multi surroundings (Rural & Urban).

We offer you to master the basic and advanced camouflage techniques.

COURSE SUITABILITY

This course is designed for any defence/ HLS individuals who wants to enhance their skill set in concealment in various areas and needs.

DELIVERY METHOD

The course begins with the basics discussed in classroom environment. Most of the training is at rural and urban “real” environment whereas each scenario starts with a full demonstration by our trainers and move into separate scenario practices.

COURSE INFORMATION

The course main topics are:

Navigation techniques

Movement techniques

Basic rural camouflage

Basic urban camouflage

Personnel and snipers hide sites

Reconnaissance missions camouflage (Operation Posts)

Understanding sensors

Signature Management





POLARIS MESH

Polaris mesh is a camouflage textile made of 100% polyester.

The mesh has 2 different camouflage patterns on each side for use in different terrain.

Polaris Mesh is lightweight and can be used as a quick solution to conceal gear, personal and vehicles in the battlefield.

SPEC

- ▷ Material: 100% polyester
- ▷ Weight per square meter: 220 grams (Tolerances: $\pm 1.5\%$)
- ▷ Holes size: 2 mm
- ▷ Width of roll: 150 cm
- ▷ FR treated
- ▷ Patterns - The mesh is printed on both sides with different camouflage patterns (woodland / desert)

PATTERNS



Desert
Land



wood
Land



SIZES

Taylor-made size

INTENDED USE





KILL FLASH

Our Kill Flash products make your lenses undetected due to sun and light reflections.

SPEC

- ▷ Honeycomb structure
- ▷ Lightweight
- ▷ Durable to corrosion
- ▷ High Strength
- ▷ Cell dimensions: 0.25" – 1"
- ▷ Thickness: 10mm/20mm
- ▷ Tailored made to any lens/observation system

INTENDED USE



Observation system	S/N	Number of lenses	Lens diameter	Lens depth	Thickness
Leupold optics MARK 4 20x60	9000-0065	1	81	27	20
Leupold optics MARK 4 12x40	9000-0066	1	61	24	20
Riflescope NIGHT FORCE NXS 5,5 - 22/56	9000-0067	1	56	13	10
Leupold optics MARK 5	9000-0068	1	51	11	10
FUJINON 10/40	9000-0069	2	42	10	10



CONTACT US

We are here to answer any question!

Email: info@polarisolutions.com

Phone: +972-54-7557420

You are also welcome to visit us at our offices at Givat Haim Ihud, Israel.

Please coordinate your visit with us in advance.

FOLLOW US

www.polarisolutions.com

www.oso-gear.com



Oso-gear



Oso-gear



RAJUGA
INVISIBLE INVINCIBLE





RAJUGA
INVISIBLE INVINCIBLE

PROFESSIONAL

POLARIS
SOLUTIONS

OUR STORY

Polaris Solutions Ltd, founded in 2009 by two former IDF SOF fighters to increase the survivability of troops in the battlefield. We use our expertise to create innovative and effective survivability solutions for Signature Management and Tactical textiles needs.

Our Brands:

RAJUGA – State of the art Camouflage and Concealment products

OSO GEAR – Tough and Durable Tactical Textiles

Our products are being used by SOF around the globe



TABLE OF CONTENTS

OUR INNOVATION	>>	4
SENSOR CONCEALMENT	>>	8
PERSONAL	>>	10
OBSERVATION POSTS CONCEALMENT	>>	21
VEHICLES	>>	28
TRAINING AND SOLUTIONS	>>	36





TVC SUBSTANCE

The Modern battlefield has changed. More and more state of the art observation sensors working in vast spectrum are scattered all across the battlefield.

We have to defeat them.

Our TVC Substance —(Thermal Visual Concealment), enable exactly that, concealing objects in the ever changing battlefield from a wide types of sensors.

SPEC

▷ TVC Substance come in 3 basic types: TVC50, TVC100, TVC150

▷ TVC50:

Total Weight:-390 gr per sqm

Thickness: 400 microns

▷ TVC100:

Total Weight:-550 gr per sqm

Thickness: 450 microns

▷ TVC150:

Total Weight:-700 gr per sqm

Thickness: 500 microns

▷ Dimensions: Max Roll width - 1.25m

PATTERNS



Light
Stone



Dark
Stone



wood
Land



Desert

Custom
Made



Visual



FIR



FIR





3D CAMO

Our TVC enable the end user to change its form by folding and molding it to fit in a specific AOR.

The end user can manipulate the TVC to imitate any 3D object in the surrounding and then fold it back to a 2D form, repeatedly.



Rolled TVC Panel



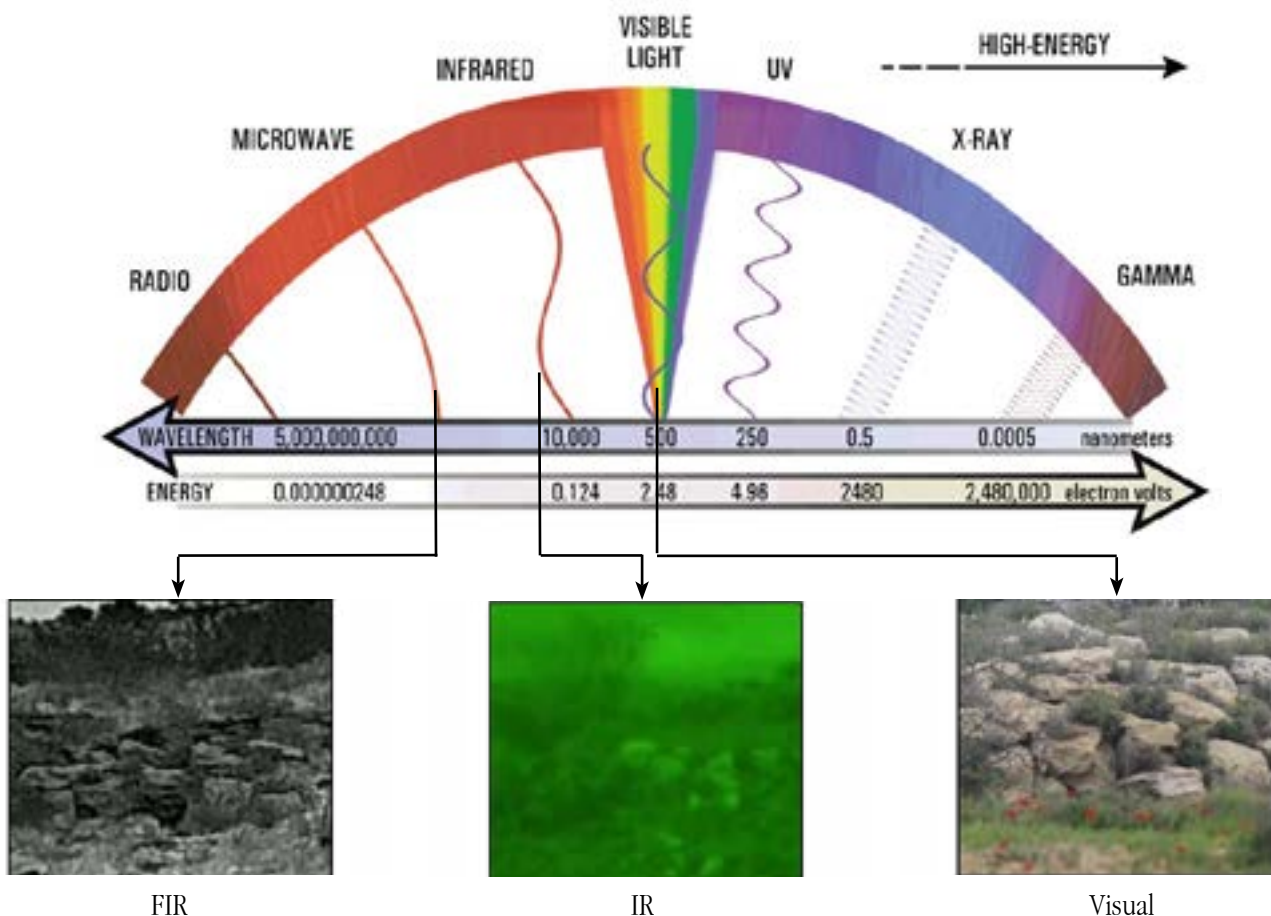
Folded TVC Panel



Molded TVC Panel

MULTISPECTRAL

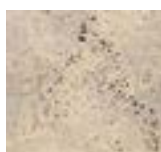
The TVC conceal an object in the Visual, IR and FIR spectrum.



2-SIDED COLORATION

The TVC can be printed in each side to resemble the coloration of a specific or general AOR.

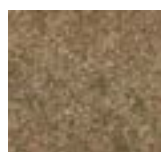
We developed a digitize coloration technique that can generate any color pattern from basic colors, which enable us to rapidly develop a tailor made camouflage pattern(see devalop camo scheme).



Light
Stone



Dark
Stone



wood
Land



Desert

*Custom
Made*

CLOSE PROXIMITY TO TARGET

When operating in an asymmetric warfare, within a complex environment one should have the closest proximity to it's target.

Using TVC made products will give you the advantage of surprise in the battlefield, taking a shot from a position only few feet away.



Sniper 5M



Vehicle 50M



SENSORS CONCEALMENT



TVC SENSOR COVERS

Using sensors in the battlefield is increasing operational effectiveness through the provision of trusted information between linked sensors in support of the tactical commander in the field.

To get full effectiveness, the sensors must be hidden from the enemy.

We offer a wide range of sensor covers, tailored made, to meet specific requirements.

SPEC

- ▷ Allowing full operation of the sensor
- ▷ Allowing broadcast through all bands
- ▷ Allowing see through in all wavelength (visual, thermal, radar etc)
- ▷ Special windows for antenna and cables
- ▷ Can be designed as weatherproof

TVC BASED SENSOR COVERS

FEATURES:

- ▷ 3D reshapable cover
- ▷ Short detection range - less than 1m
- ▷ Weather resistance
- ▷ Highly durable
- ▷ Perfect for long lasting missions
- ▷ Can be designed to imitate every object.



TVC PANELS

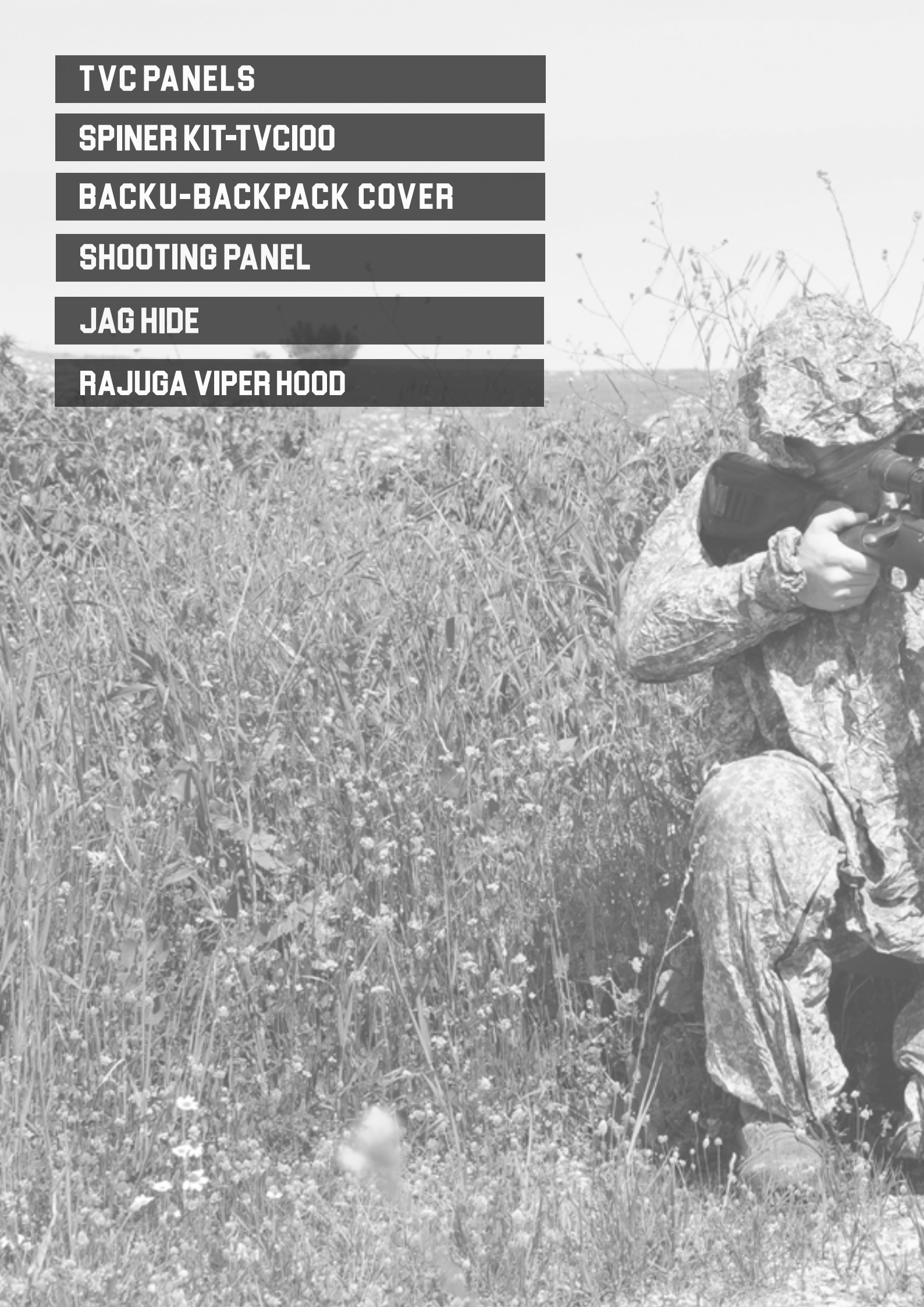
SPINER KIT-TVC100

BACKU-BACKPACK COVER

SHOOTING PANEL

JAG HIDE

RAJUGA VIPER HOOD





PERSONAL



TVC PANELS

Our TVC Panels is used as a basic concealment panel to hide gear, backpacks, sensors, and as part of a man/team hide.

The panels are made from our unique TVC substance.

The TVC panels can be printed both sides according to specifications.

PATTERNS



Light Stone Dark Stone wood Land Desert

INTENDED USE



TVC PANELS

	SIZE	TOTAL WEIGHT	S/N
TVC50M	60X60 cm	150 gr	9002-0051
TVC50L	100X125 cm	540 gr	9002- 0082
TVC50XL	200X125 cm	1 kg	9002-0021
TVC50XXL	250X125 cm	1.3 kg	9002-0083
TVC100M	60X60cm	218 gr	9002-0061
TVC100L	100X125 cm	760 gr	9002-0006
TVC100XL	200X125 cm	1.5 kg	9002-0007
TVC100XXL	250X125 cm	1.8 kg	9002-0016
TVC150M	60X60 cm	277 g	9002-0004
TVC150L	100X125 cm	960 g	9002-0003
TVC150XL	200X125 cm	1.9 kg	9002-0002
TVC150XXL	250X125 cm	2.4 kg	9002-0001



SNIPER KIT- TVC100

Sniper. The Ultimate Hunter.
We bring you a state of the art
Concealment kit to ensure closer
proximity to target while not being
detected in the visual, IR and FIR
range.

The Kit include a backpack cover and
a personal cover both made from our
unique TVC substance.

PARTS

- ▷ TVC100XXL
- ▷ TVC100L
- ▷ Pack Sac

SPEC

TVC100XXL:

Weight— 1.8kg-3.9lbs,
Length-2.5m, Width-1.25m

TVC100L:

Weight— 0.7kg, 1.5 lbs
Length-1.25m, Width-1m

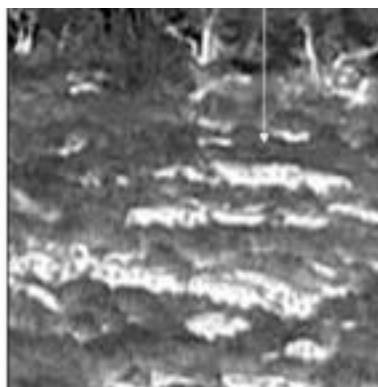
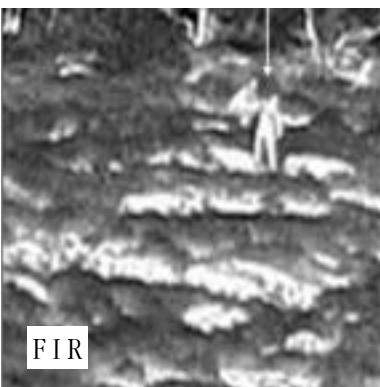
Pack Sac:

Weight— 160 gr, 0.3 lbs
Length-50 cm, Width-28 cm
depth- 15 cm

PATTERNS



INTENDED USE



FIR





BACKU- BACKPACK COVER

BACKU, a backpack cover to enhance the survivability of the operator and his gear.

The BACKU ensure closer proximity to target while not being detected in the visual, IR and FIR range.

The BACKU is made from our unique TVC substance.

SPEC

- ▷ Total Weight: 0.7 kg - 1.65 Pound
- ▷ Dimensions: Length-4.1 Ft, Width-3.2 Ft
- ▷ Dimensions (folded): Diameter—0.5 Ft
- ▷ Includes Mil Spec straps for securing to backpack

PATTERNS



INTENDED USE





SHOOTING PANEL

The TVC Shooting Panel is used as a basic concealment panel to hide snipers, sharp shooters and alike. The TVC Shooting Panel is made from our unique TVC substance with a special shooting window. The panel can be printed both sides according to specifications.

SPEC

	SIZE	WEIGHT	S/N
TVC100M	60X60 cm	218 gr	9002-0084
TVC100L	100X125 cm	760 gr	9002-0059
TVC100XL	200X125 cm	1.5 kg	9002-0029
TVC100XXL	250X125 cm	1.8 kg	9002-0030

PATTERNS

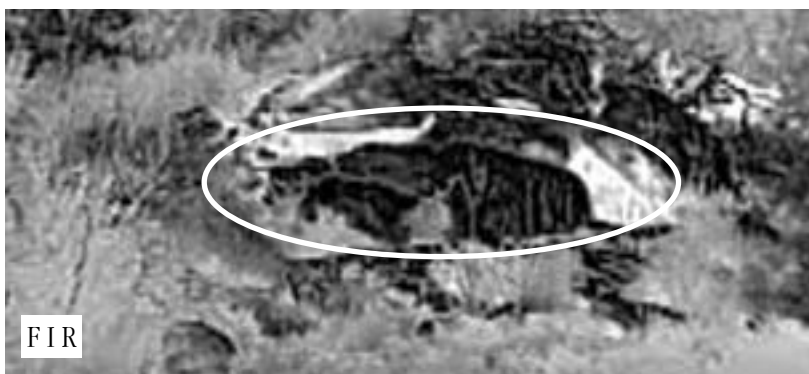


Light Stone Dark Stone wood Land Desert

INTENDED USE



SIZES





JAG HIDE

Our foremost versatile and modular concealment product, the Jag Hide gives full coverage for all missions set, from raids to recon missions, from personnel use to OP's.

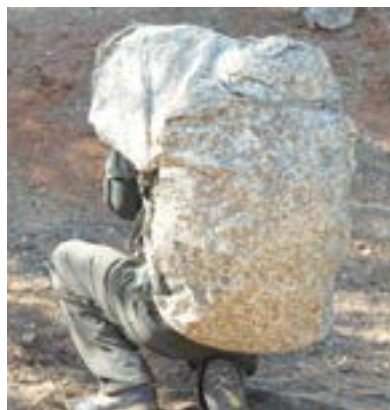
Made from our unique TVC substance to have 3D multispectral concealment.

ONE HIDE TO CONCEAL THEM ALL!

MULTIPLE USAGE

- ▷ Backpack cover
- ▷ Poncho
- ▷ Personal Hide
- ▷ Team OP
combine few Jag Hides and our Infrastructure Kit for a quick set up!
- ▷ Concealment and Shelter
use as a sandbag
- ▷ Medical usage
splinter, stretcher, thermal blanket etc

PRODUCT FEATURES



PATTERNS



Light Stone Dark Stone wood Land Desert

INTENDED USE





FIR VIEW

JAG HIDE			
	SIZE	WEIGHT	S\N
TVC5oLL 300	180X100 cm	850 gr	9002-0062
TVC5oXL 300	200X125 cm	1250 gr	9002-0069
TVC5oXXL 300	250X125 cm	1550 gr	9002-0063



RAJUGA VIPER HOOD

The element of surprise in the battlefield is a key element, especially for snipers and assaulters. Our Rajuga Viper Hood designed for complex environment whether the threat is visual or thermal and work in unity with standart combat gear: helmets, plate carrier, backpack etc. An operator can get the benefits of a Ghillie suit without being cumbersome.

Tactical Applications:

LP/OP

Reconnaissance/Intelligence

Surveillance

Dismounted Patrol

Ambush

FEATURES

- ▷ Multispectral Concealment
- ▷ Reversible: 2 color option
- ▷ Adjustable chest tension strap
- ▷ Multiple tension cords throughout for adjustment fit
- ▷ Nylon webbing is bar-tacked throughout entire outer shell to accommodate the use of foliage and fiber garnish
- ▷ Ventilation built into sides of hood for ventilation and visual observation
- ▷ Fits ovetop most tactical helmets

SPEC

- ▷ Made from our unique TVC substance

PATTERNS



INTENDED USE



INFRASTRUCTURE KIT

SQUAD INFRASTRUCTURE KIT

MOR CONCEALMENT KIT

HASTY CAMO KIT

SPIKE CAMO KIT

OBSERVATION POSTS CONCEALMENT



INFRASTRUCTURE KIT

The Infrastructure Kit is a supportive element for hides, perfect for fire base and Reconnaissance positions.

SPEC

- ▷ Designed for 4-6 persons
- ▷ Total Weight: 10 Pound-4.5 kg
- ▷ Footprint Measurements 8X5 Ft-2.4x1.5 m
- ▷ Kit size when folded:0.6X1.7 Ft-50 x20 cm
- ▷ Aluminum poles
- ▷ Mil Spec Straps
- ▷ Mil Spec Nylon buckles and hardware

INTENDED USE



PARTS



Fly



Footprint



Pack Sack



Poles



SQUAD INFRASTRUCTURE KIT

The Infrastructure Kit is a supportive element for hides, perfect for fire base and Reconnaissance positions.

SPEC

- Designed for 2-4 persons
- Total Weight: 4.4 Pound-2 kg
- Footprint Measurements
- 5.7X4.1 Ft-175x125 cm
- Kit size when folded:0.6X1.8 Ft-50 x20 cm
- Aluminum poles
- Mil Spec Straps
- Mil Spec Nylon buckles and hardware

INTENDED USE



PARTS



Fly



Footprint



Pack Sack



Poles



MOR CONCEALMENT KIT

The MOR Concealment Kit purpose is to conceal a team of 4-6 end users in different terrains.

PARTS

- ▷ 6 TVC100L Panels - 9002-0006
(dimensions: 1.25mX1m)
- ▷ 6 TVC100XL Panels - 9002-0007
(dimensions: 1.25mX2m)
- ▷ Infrastructure Kit - 9004-0002

SPEC

- ▷ Total Weight:-18kg
- ▷ Total TVC Coverage: 22.5 sqm

PATTERNS



INTENDED USE







HASTY CAMO KIT

A Camouflage kit for 4-6 observation/
fire base squad.

FEATURES

- ▷ Shoot through / See through mesh
- ▷ Replaceable Camo Mesh
- ▷ Rugged Infrastructure
- ▷ Dedicated straps for adding natural cover
- ▷ Hasty set up: 10 minutes
- ▷ Include waterproof footprint

PARTS

- ▷ Mesh - 4.5X4.5 m
- ▷ Infrastructure Kit -9004-0002
- ▷ Bag

PATTERNS



wood Land
Desert

INTENDED USE





SPIKE CAMO KIT

The TVC Spike Cover enable to increase survivability of the Spike System and operator, made out of Polaris Unique TVC Material

The Kit gives the operator the capability to fast setup and breakdown the concealment hide, it gives the operators a wide area of operation in order to increase survivability and sustainability.

FEATURES

- ▷ Versatility: adaptation to varied environments
- ▷ Multi-Spectral : due to advancement in sensors technology
- ▷ Easy Transport: minimal weight and volume
- ▷ Minimal Detection Range: due to threat proximity
- ▷ Austere Environment Operation

PARTS

- ▷ 1 X Infrastructure Kit - 9002-0004
- ▷ 2 X JAG HIDE XXL 300 - 9002-0063
- ▷ 6 X JAG HIDE XL 300 - 9002-0069

PATTERNS



INTENDED USE



ATVC MODULE

M-PACS

ARMADILLO





VEHICLES



ATVC MODULE

The ATVC (All Terrain Vehicle Concealment) Module, is a concealment element design to conceal large objects such as vehicles, Humvees etc.

The ATVC Module is made from our unique TVC substance and camouflage mesh, both are dual side printed according to end user specifications.

Usage Examples:

ATV Single sit (such as "Polaris Sportsman") - one module

ATV Multi sit (such as "Polaris MRZR") - 4 modules

Vehicle (such as "Polaris Dagor")- 6 modules



SPEC

- ▷ Total Weight:-6.3kg (without cover)
- ▷ Dimensions: Length-4m, Width-2m
- ▷ Total Coverage: 8 sqm.

PATTERNS



Light Stone Dark Stone wood Land Desert

INTENDED USE



PRODUCT FEATURES







M-PACS

The M-PaCS (Modular Platform Concealment System) is the most advanced static concealment cover for platforms.

It is designed with SF in mind and in action, enable the users to have a 3D cover, retaining multispectral concealment and a break away function.

The M-PaCS can be customized to suit any platform from ATV's to Humvees and other vehicles.

FEATURES

Tactical

- ▷ Multispectral Concealment
- ▷ 3D Camouflage
- ▷ Reversible: 2 Sided Coloration
- ▷ 360 Degrees Cover
- ▷ Observation & Gun system Operation While Covered
- ▷ Field Adaptable Capability
- ▷ Short Detection Range
- ▷ Low Volume & Weight
- ▷ Fast & Simple Deployment & Folding
- ▷ Quick Release

Logistics

- ▷ Can be installed with Drip Rail system
- ▷ Up to 10 minutes operational assembly for 360 degrees cover
- ▷ Can be assembly and disassembly by one operator if needed
- ▷ Integrated infrastructure inside the cover allowing space for rest, observation, Mechanical repairs, medical treatment
- ▷ Short instruction time
- ▷ Modules can be quickly disconnected from the roof tuck for air transportation

SPEC

This spec is for M-Pacs designed for Land Rover Defender vehicle

Module	Weight	Coverage
Front Module	21.3 pound {9.7 kg}	Length - 9.8 ft {3m} Width-6.5 ft {2m}
Side Module (R)	42.5 pound {19.3 kg}	Length - 9.8 ft {3m} Width-14.5 ft {4.5m}
Side Module (L)	42.5 pound {19.3 kg}	Length - 9.8 ft {3m} Width-14.5 ft {4.5m}
Rear & Top Module	36.7 pound {16.7 kg}	Length - 19.6 ft {6m} Width-6.5 ft {2m}
L Mount system	31 pound {14 kg}	
Total	174 pound {79 kg}	

PATTERNS



Light Stone Dark Stone wood Land Desert

INTENDED USE





M-PACS-50 METER



ARMADILLO

ARMADILLO is a tailor made concealment kit for any vehicle or platform.

The kit parts are made from our unique TVC substance which enable the user to blend in the environment without being detected.

The TVC conceal an object in the Visual, IR and FIR spectrum.

SPEC

Dimensions: Tailor made for any platform

Weight (sqm): 5.8 lbs (1.9 kg)

PARTS

Various panels according to the platform silhouette connection to the platform by quick release elements

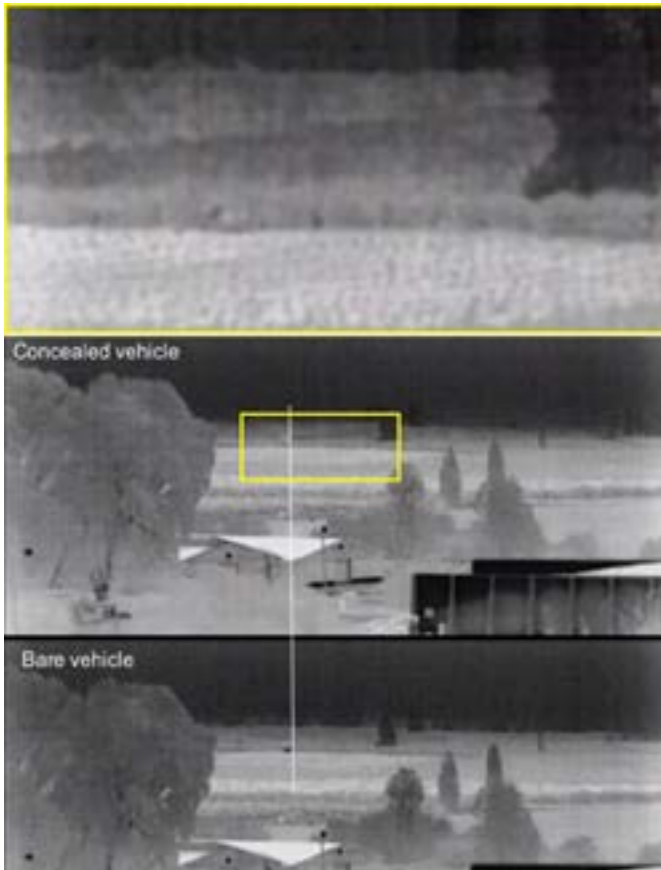
2-SIDED COLORATION

The TVC can be printed on each side to resemble the coloration of a specific or general AOR.

We developed a digitize coloration technique that can generate any color pattern from basic color, Which enable us to rapidly develop tailor-made camouflage pattern

(See develop camo scheme)

PATTERNS



CUSTOM MADE PANELS

DEVELOP CAMO SCHEME





TRAINING AND SOLUTIONS



CUSTOM MADE PANELS

With over 20 years of combined Military and Law Enforcement experience, We have seen our share of Camouflage and Concealment gear.

As part of our ongoing work with SF elements we found ourselves making tones of specific requirements concealment covers, from gun covers, observation equipment to vehicles.

Mission specific concealment products is a major part of our DNA.

FEATURES

- ▷ Specific purpose
- ▷ Specific camouflage patterns
- ▷ Mimic a specific object
- ▷ Design to cover a specific combat gear
- ▷ Specific materials requirements

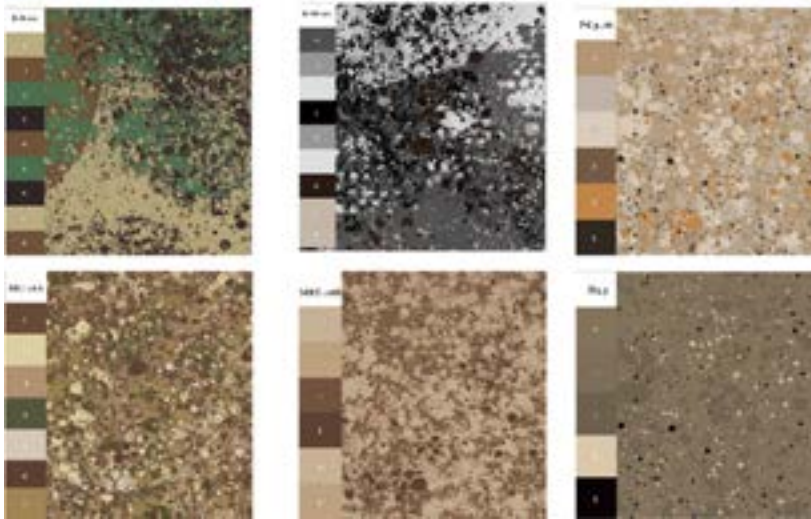
We are the experts in custom designed Camouflage and Concealment gear for your precise application. We develop our gear from a tactical user's perspective and deep understandings of the environment.

INTENDED USE





Examples



DEVELOP CAMO SCHEME

As experts in concealment, we offer our clientele a service of developing their individual Camo Scheme.

Our method of developing the schemes is based on hundreds of tests and evaluations of different schemes in different environments.

After establishing the scheme, it is digitally saved in our library for future usage.

By using our method we can develop schemes to infinity of patterns (rural, urban etc).

The scheme than can be printed on various martials (mesh, fabrics, stickers etc) and is the camouflage pattern for all of our concealment products.

We can also work with HI-RES pictures to develop a pattern.





CONTACT US

We are here to answer any question!

Email: info@polarisolutions.com

Phone: +972-54-7557420

You are also welcome to visit us at our offices at Givat Haim Ihud, Israel.

Please coordinate your visit with us in advance.

FOLLOW US

www.polarisolutions.com

www.oso-gear.com



Oso-gear



Oso-gear



RAJUGA
INVISIBLE INVINCIBLE

