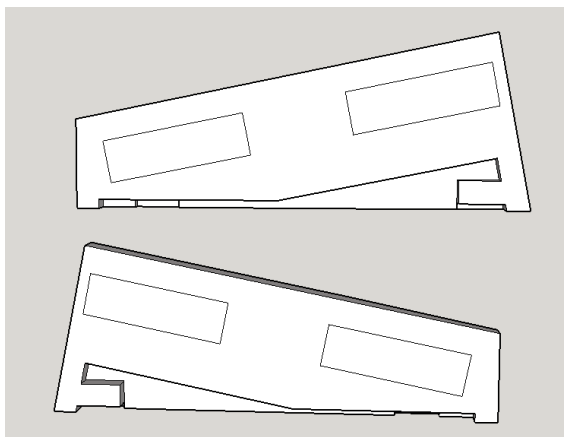


Transforming your MiniBrute (MB) into a SkiniBrute (SB) requires a standard Phillips head screw driver. Also recommended is a soft towel or foam sheet to protect the synthesizer during install.

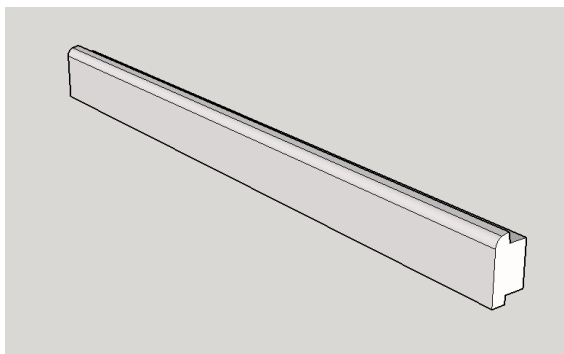
As a general rule, sometimes getting the fit correct requires a few adjustments. It is recommended that when installing screws or bolts, give each screw a few turns just enough to seat the threads. Do not tighten until all of the screws have been threaded.

Your SB conversion kit includes the following parts:

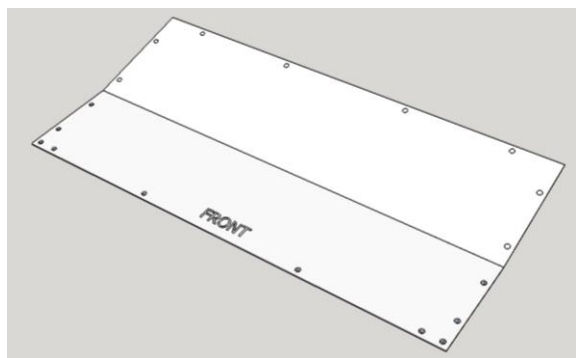
- One (1) left and One (1) right wood Side Panel:



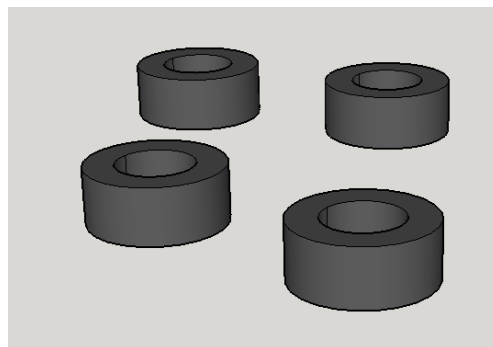
- One (1) wood Front Rail:



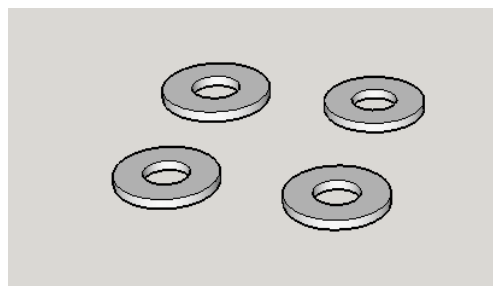
- One (1) Bottom Cover:



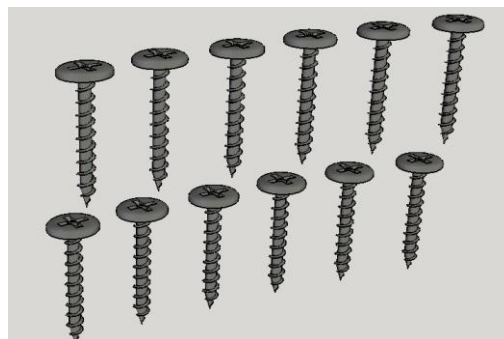
- Four (4) Rubber Feet:



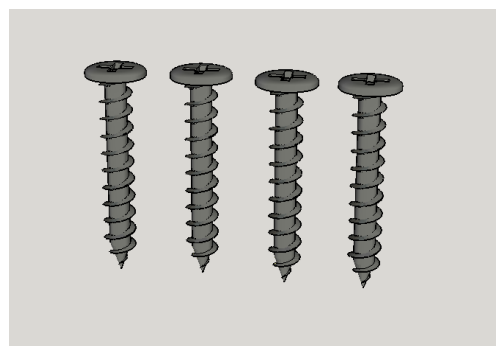
- Four (4) Washers / Shims:



- Twelve (12) #4 1/2" (smaller) Wood Screws:



- Four (4) #6 1/2" (larger) Wood Screws (for rubber feet):



- 1) Place your MB upside down on top of the towel or foam sheet.



- 2) Remove and save the 16 screws circled in the photo above. The four screws along the back will be re-used.
- 3) Carefully slide out the front keyrest:



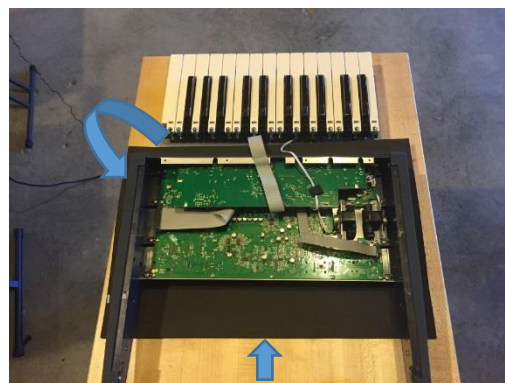
- 4) Flip the MB over so the keys are facing away from you:



- 5) Slowly lift the sides and front panel up and away from the keybed. The ribbon cables will remain attached for now.



- 6) Slide the towel or foam sheet up under the front panel of the synth and lay the panel flat so that it is upside down and pointing towards you:



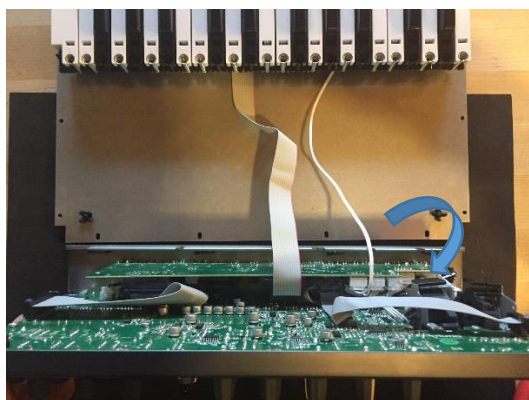
- 7) Remove and save the 8 self-tapping screws attaching the side panels circled in the photo below. Save the screws for re-attaching the SB side panels.



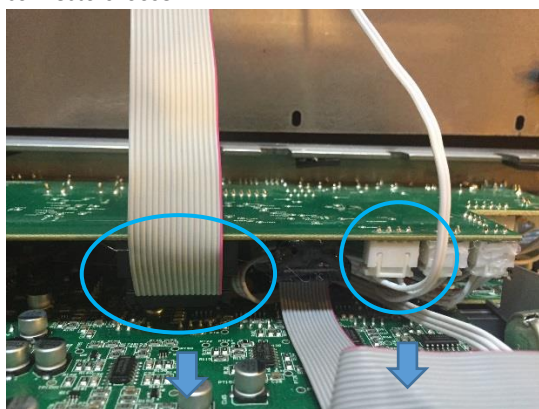
- 8) With the screws removed, carefully pull off the MB side panels.



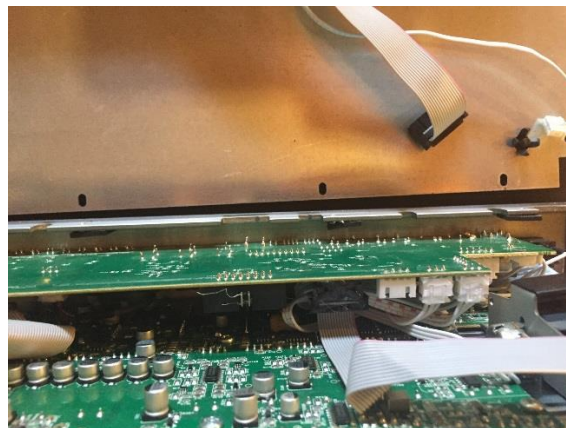
- 9) With the side panels removed, rotate the control panel to a vertical position to allow access to the keyboard cables.



- 10) Carefully unplug the large keyboard ribbon cable, and small keyboard after-touch cable as indicated below. A small flat screw driver might prove handy to pry the connectors loose.



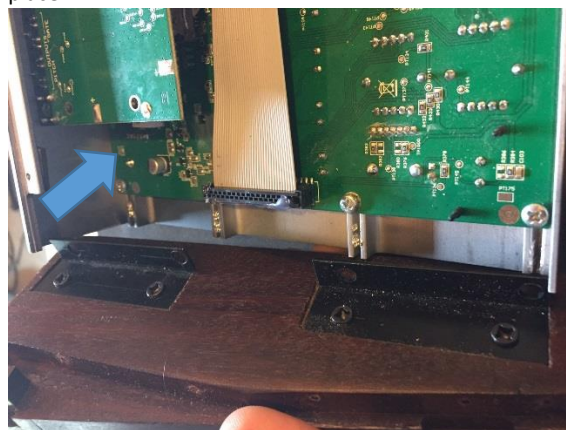
- 11) With the cables unplugged, the keyboard assembly is now free to remove.



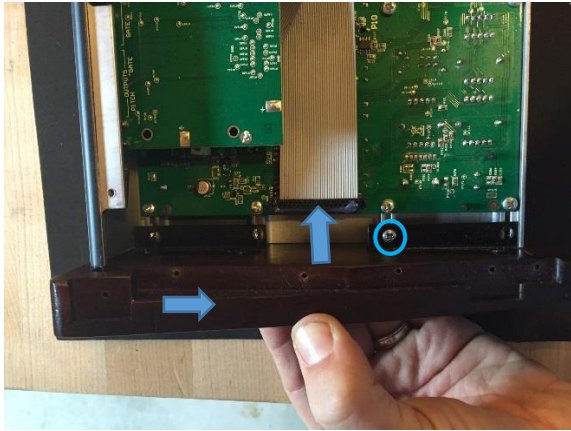
- 12) Prepare to attach the side panels to the synth.



- 13) Place one side panel onto the synth body as shown. **The fit may be very tight depending on the bracket fit.** This is normal. If the fit is tight, begin placing the front-most side panel into position, with the rear lifted up at angle. Then apply a constant pressure to the rear to slide it down into place.



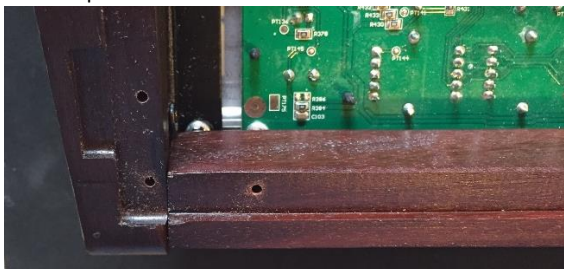
14) Once the side panel has been fitted in place, use the previously removed side panel screws to attach. If the panel is loose, position the side panel by sliding the brackets to the front of the synth as far as possible, and tightly into the synth body. Try to maintain pressure on the panel in these directions while inserting the screws. It's ok if the bracket holes look misaligned at this point. Insert one of the middle self-tapping screws just enough to engage the threads. Do not tighten.



15) Continuing to apply pressure towards the side and front of the synth, thread, then tighten the remaining self-tapping screws. Then, repeat the steps to attach the other side panel. Do not overtighten these screws.



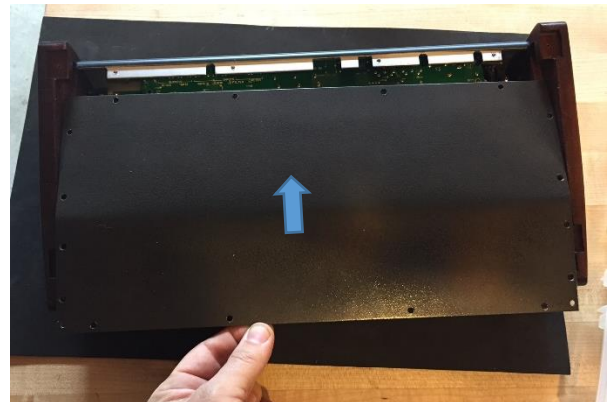
16) With the side panels attached, carefully slide the front wood rail into place. The fit should be tight. Again slightly insert one end, then push the other end into place. The bottom recessed portion of the front rail should align with the side panel recess as shown:



17) Flip the synth over, and check the alignment of the front rail with the front panel. The front rail should fit flush against the panel.



18) Slide the bottom cover into place. It only fits in one direction. The bottom cover is folded almost in half, but the rear is slightly longer than the front. The front also has more screw holes near the corners. The cover should slide into place under the side panel rear foot supports.



19) Align the bottom cover with the four threaded holes in the rear. Insert and partially thread 4 of the original bottom panel machine screws. Do not tighten yet.



- 20) Attach the bottom cover to the side panels using one small black wood screw on each side panel as shown. Partially thread the screws. Do not tighten yet. Do not worry if the pilot holes don't align perfectly. The screws will find their way!



- 21) Next, secure the front rail by inserting and tightening two small black wood screws on each side in the front corners of the front rail and side panel, as shown.



- 22) Next, insert and tighten the remaining side panel and front screws as shown. Two screws holes towards the front corner of the side panel should remain empty.

23) .



- 24) Return to the rear screws attaching the bottom cover to the synth and completely tighten.

- 25) Finally, using the larger wood screws, attach the four rubber feet to the side panels as shown. Be careful not to overtighten and strip the pilot holes.



- 26) Flip your newly transformed SkiniBrute over and test the alignment on a flat surface. Your SB will likely be off balance...and wobble between two of the feet. This is normal and is due to the tolerance of the brackets, side panel mortises, and installation. Four washers are supplied as shims. Carefully inspect how the synth is wobbling..one of the two feet on one side will be lower/higher than the other. Remove the rubber foot and place a washer around the hole as shown:



- 27) Usually one or two washers on one foot will eliminate the wobbling. Re-attach the foot and check again. Continue until the SkiniBrute sits flat.

Enjoy your SkiniBrute!