

ReSound LiNX™

Quick Guide for Using ReSound LiNX with your iPhone



ReSound



rediscover hearing

Quick setup and usage guide for Made for iPhone (MFi) functionality

Hardware supported

ReSound LiNX supports MFi functionality with the following hardware from Apple.

- iPhone® 5s
- iPhone 5c
- iPhone 5
- iPad® Air
- iPad 4th generation
- iPad mini with Retina display
- iPad mini
- iPod touch® 5th generation

MFi hearing instruments require iOS 7.X or later versions.

Pairing and connecting your ReSound LiNX devices to your iPhone, iPad, or iPod touch

Now you are ready to pair to your ReSound LiNX hearing instruments.

Pairing the hearing aids to a supported Apple device

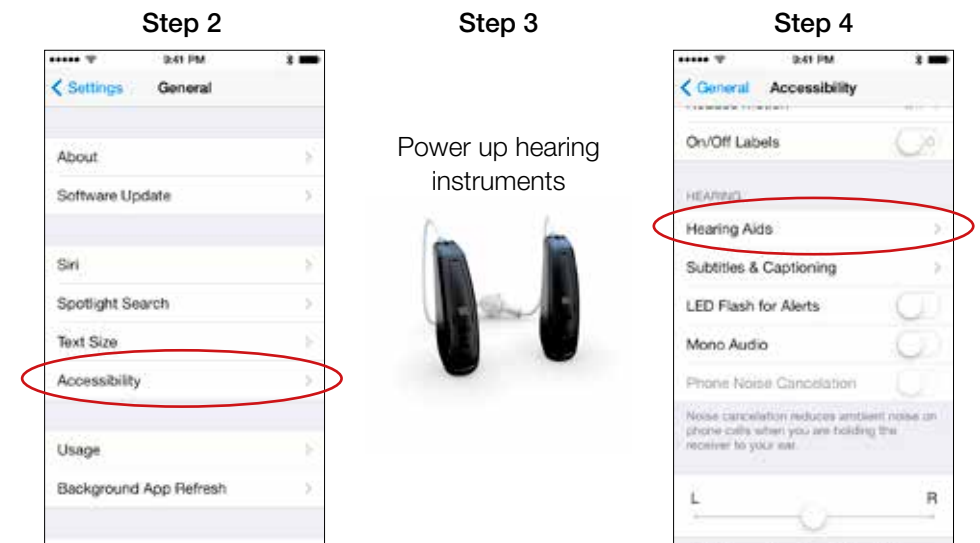
To start, make sure you have your ReSound LiNX hearing instruments available with fresh batteries inserted. Do not close the battery doors at this point.

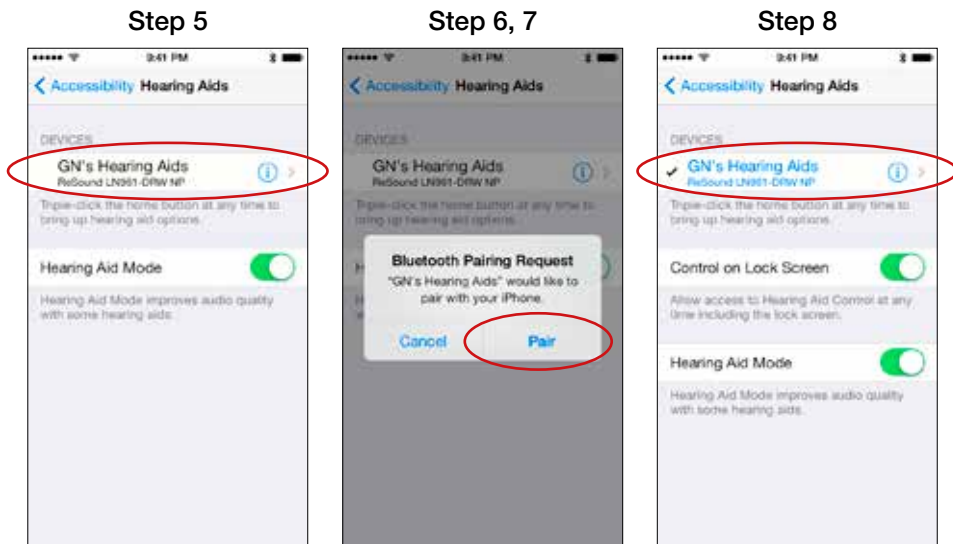
1. Turn on Bluetooth functionality on the Apple device if it is not already on.
2. Go to the **Settings > General** menu. Then select **Accessibility** in the General menu.
3. Power up ReSound LiNX hearing instruments by closing the battery doors.
4. Select **Hearing Aids** in the Accessibility menu on the Apple device.
5. Once you enter the Hearing Aids screen, you will see the name of your hearing instruments appear along with the ReSound brand name and model number.
6. Tap on the center of the name of your hearing instruments on the screen.

7. Pairing requests will now appear asking if you would like to pair to your iPhone, iPad, or iPod touch. Press "Pair" to begin the pairing process to your ReSound LiNX hearing instruments. Note that for pairing to two hearing instruments, there will be two separate pairing requests.
8. Your iPhone, iPad, or iPod touch will now pair to the Resound LiNX hearing instruments and automatically connect to them.

Key note: This first time pairing includes an MFi authentication process. **WHILE THIS PROCESS OF AUTHENTICATION IS OCCURRING, DO NOT START ANY STREAMING TO RESOUND LINX AFTER PRESSING THE PAIRING REQUESTS.** You can verify this process is completed in one of two ways.

- Place the hearing instruments on your ears while the process is occurring. Once completed, you will hear a series of 6 beep tones followed shortly thereafter by a ripple tone.
- Wait for more than 60 seconds to be certain that the process has completed.





Re-Connecting to your Apple device

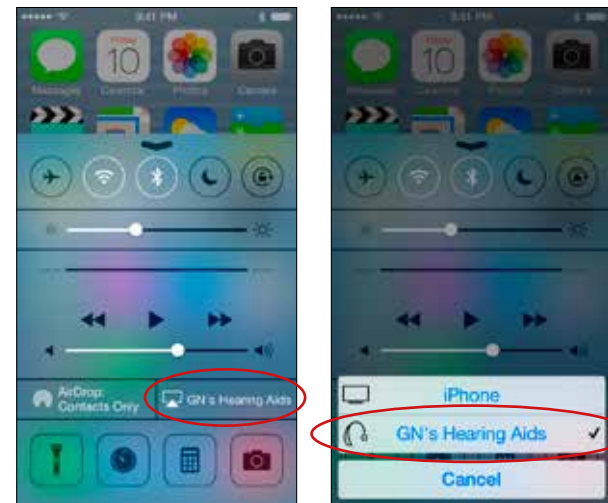
When you turn off your hearing instruments, they will be disconnected. To connect them again, turn on your hearing instruments by opening and closing the battery door. The ReSound LiNX hearing instruments will then automatically connect to your iPhone, iPad, or iPod touch.

Pairing to more than one Apple device

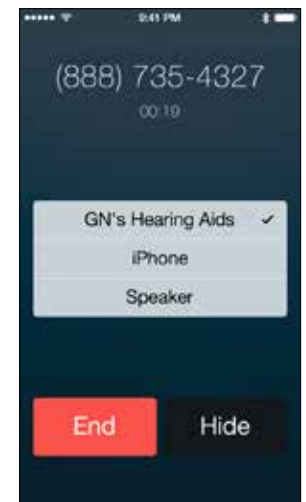
With ReSound LiNX, you can pair up to 5 different Apple devices to your hearing aids following the process above, but you can only connect to one device at a time. You will need to disconnect from your currently connected device to connect to the new one.

Streaming directly from your iPhone, iPad, or iPod touch to your ReSound LiNX device

1. When playing music with the media player or apps on your iPhone, iPad, or iPod Touch, you can stream directly to your connected ReSound LiNX hearing instruments. Select the source as the hearing instruments using AirPlay® and start streaming. Volume can be controlled by the slider or volume buttons on the Apple device.



2. With ReSound LiNX and your iPhone, iPad, or iPod touch, you can also stream the audio of phone or FaceTime® calls to your hearing instruments. Start streaming using the source selection and when the call is completed, just end the call to return to normal ReSound LiNX operation.



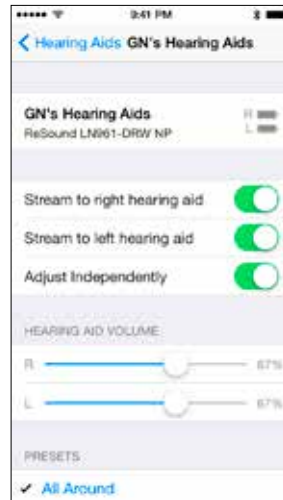
Controlling your ReSound LiNX directly from your iPhone, iPad, or iPod touch

With your ReSound LiNX hearing instruments connected, you can control elements of them directly from your iPhone, iPad or iPod touch — either via Settings or by using the Accessibility Shortcut.

Controlling ReSound LiNX via Settings

Access the connected ReSound LiNX device via the **Settings > General > Accessibility > Hearing Aids** menu. Tap on the name of your hearing instrument to access more features.

Once in this screen, you can see key information, adjust volume, and select programs. You can also enable Live Listen™ which allows you to use the Apple device microphone to pick up directed sound and stream it directly to the hearing instruments.



Controlling ReSound LiNX via the Accessibility Shortcut

You can also access your ReSound LiNX devices via the Accessibility Shortcut (a triple-click of the home button) to change volume, programs, etc...

Further support

For more information and support on the ReSound LiNX product and its Made for iPhone functionality, please contact your hearing care professional or visit our support site at www.resound.com/linx.



ReSound LiNX is compatible with iPhone 5s, iPhone 5c, iPhone 5, iPad Air, iPad (4th generation), iPad mini with Retina display, iPad mini, and iPod touch (5th generation) using iOS 7.X or later.

Apple, the Apple logo, AirPlay, FaceTime, Live Listen, iPhone, iPad and iPod are trademarks of Apple Inc., registered in the U.S. and other countries.

Worldwide Headquarters

ReSound A/S
Lautrupbjerg 7
DK-2750 Ballerup, Denmark
Tel.: +45 45 75 11 11
Fax: +45 45 75 11 19
www.resound.com

CVR no. 55082715

United Kingdom

GN ReSound Ltd.
Kirtlington Business Centre
Portway
Kirtlington
Oxon OX5 3JA
Tel.: +44 1869 352 800
Fax: +44 1869 343 466
www.gnresound.co.uk

Australia

GN ReSound Pty. Ltd.
Unit R1 Regents Park Estate
391 Park Road
Regents Park NSW 2143
Tel.: (free) 1800 658 955
Fax: +61 2 9743 7472
www.gnresound.com.au

New Zealand

GN ReSound (NZ) Ltd.
12 Parkway Drive
Mairangi Bay
Auckland
Tel.: (free) 0800 900 126
Fax: (free) 0800 007 695
www.gnresound.co.nz

ReSound



rediscover hearing